

ISSN 1682-1750

THE INTERNATIONAL ARCHIVES OF THE PHOTOGRAMMETRY, REMOTE SENSING AND SPATIAL INFORMATION SCIENCES
ARCHIVES INTERNATIONALES DE PHOTOGRAMMÉTRIE, DE TÉLÉDÉTECTION ET DE SCIENCES DE L'INFORMATION SPATIALE
INTERNATIONALES ARCHIV FÜR PHOTOGRAMMETRIE, FERNERKUNDUNG UND RAUMBEZOGENE INFORMATIONSWISSENSCHAFTEN

PROCEEDINGS

VOLUME
VOLUME
BAND

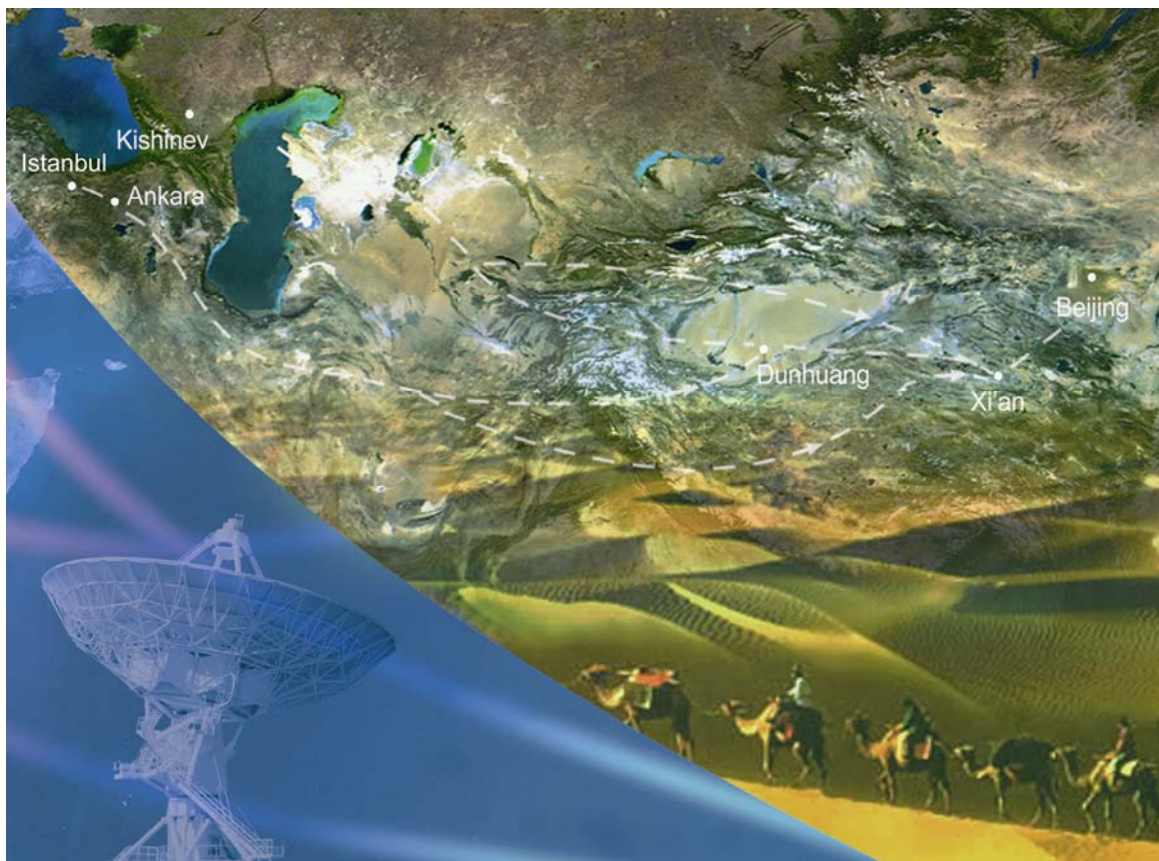
XXXVII

PART
TOME
TEIL

B3b

COMMISSION
COMMISSION
KOMMISSION

III



Edited by:
CHEN Jun, JIANG Jie, Wolfgang FÖRSTNER

This compilation © 2008 by the International Society for Photogrammetry and Remote Sensing. Reproduction of this volume or any parts thereof (excluding short quotations for the use in the preparation of reviews and technical and scientific papers) may be made only after obtaining the specific approval of the publisher. The papers appearing in this volume reflect the authors' opinions. Their inclusion in this publication does not necessarily constitute endorsement by the editors or by the publisher. Authors retain all rights to individual papers.

Copies of this book/CDROM are available from:

Reed Business - Geo (former GITC) by
P.O.Box 112
8530 AC Lemmer
The Netherlands
Tel: +31 (0) 514 56 18 54
Fax: +31 (0) 514 56 38 98
E-mail: geo@reedbusiness.nl
<http://www.reedbusiness-geo.nl>

Copyright 2008

ISPRS Council 2004-2008

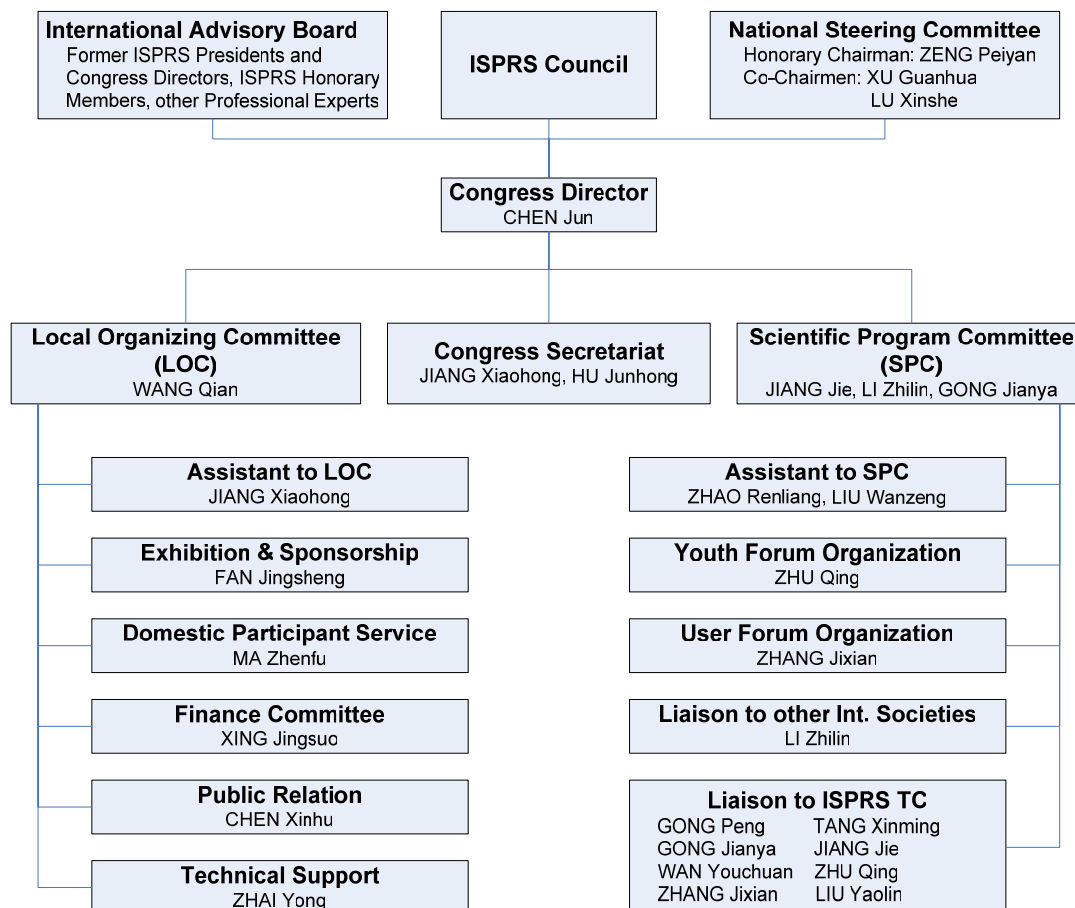
President	Ian Dowman	United Kingdom
Secretary General	Orhan Altan	Turkey
Congress Director	Chen Jun	P. R. China
First Vice President	John Trinder	Australia
Second Vice President	Emmanuel Baltsavias	Switzerland
Treasurer	Stanley Morain	USA

Technical Commission Presidents 2004-2008

Commission I	Alain Baudoin	France
Commission II	Wolfgang Kainz	Austria
Commission III	Wolfgang Foerstner	Germany
Commission IV	Shailesh Nayak	India
Commission V	Hans-Gerd Maas	Germany
Commission VI	Kohei Cho	Japan
Commission VII	John van Genderen	The Netherlands
Commission VIII	Ammatzia Peled	Israel

In cooperation with Working Group Chairpersons responsible for the reviewing of extended Abstracts and acceptance of contributions. Authors delivered camera ready manuscripts and selected the keywords.

Congress Organising Committee



Introduction

The work in ISPRS Commission III “Photogrammetric Computer Vision and Image Analysis“ is devoted to the design, development, and evaluation of mathematical models and methods for automatic orientation and calibration of images, surface reconstruction, fusion of multi-modal data, processing and interpretation of laser range data, interpretation of images, and image sequence analysis with emphasis on integration of geometry, statistics, and semantics, modelling of spatial objects and temporal events, modelling context, scale behaviour of appearance models, use of graphical models, especially Markov random fields and Bayesian networks.

This volume collects the papers which have been selected based on the submitted abstracts.

We thank the authors for their contribution to this volume and wish an interesting reading.

Wolfgang Förstner, President of ISPRS Technical Commission III
Helmut Mayer, Vice-President of ISPRS Technical Commission III

Table of Contents

WG III/1: Automatic Calibration and Orientation of Optical Sensors

Autonomous Photogrammetric Network Design Basing on Changing Environment Genetic Algorithms <i>YANG Jian, LU Nai-Guang</i>	1
A New Prompt Algorithm for Removing the Bowtie Effect of MODIS LIB Data <i>Xiongfei Wen</i>	5
Research on Close-range Photogrammetry with Big Rotation Angle <i>Lu Jue</i>	11
Camera Calibration Based on Liquid Crystal Display (LCD) <i>ZHAN Zongqian</i>	15
Precision and Reliability of GPS-Coordinates of Projection Centers in Real Aerial Triangulations <i>J. Ziobro</i>	21
Filtering LIDAR Points by Fusion of Intensity Measures and Aerial Images <i>J. H. Mao, Q. H. Zeng, X. F. Liu, J. Z. Lai</i>	25
The Comparisons of 3D Analysis Between Photogrammetry and Computer Vision <i>Chunsen ZHANG, Wanqiang YAO</i>	33
On the Quality of Automatic Relative Orientation Procedures <i>Thomas Läbe, Timo Dickscheid and Wolfgang Förstner</i>	37
Closed-Form Solution of Space Resection Using Unit Quaternion <i>GUAN Yunlan, CHENG Xiaojun, ZHAN Xinwu, ZHOU Shijian</i>	43
Matching Conjugate Points between Multi Resolution Satellite Images Using Geometric and Radiometric Properties <i>Ahmed F. Elaksher and Abdel-Latif A. Alharthy</i>	49
Estimation of Opto-Mechanical Parameters for Calibration of Laser Scanners <i>Qing FU, Hongchao FAN, Aloysuis WEHR, Uwe STILLA</i>	55
A Multi-temporal Image Registration Method Based on Edge Matching and Maximum Likelihood Estimation Sample Consensus <i>Yan Song, Xiuxiao Yuan, Honggen Xu</i>	61

WG III/2: Surface Reconstruction

A Benchmark Dataset for Performance Evaluation of Shape-from-X Algorithms <i>Bellmann Anke, Hellwich Olaf, Rodehorst Volker and Yilmaz Ulas</i>	67
A Fast Object-to-Image Best Scanline Search Algorithm for Airborne Linear Pushbroom Image Processing <i>Mi Wang and Fen Hu</i>	73
Integrated Method of Building Extraction from Digital Surface Model and Imagery <i>Yan Li, Lin Zhu, Hideki Shimamura</i>	81
3D Modeling Using Structured Light Pattern and Photogrammetric Epipolar Geometry <i>M.Mazaheri, M.Momeni</i>	87
The Precision Analysis of 3D Reconstruction Based on Generalized Stereopair <i>Weixi Wang, Qing Zhu, Hao Liu</i>	91
An Algorithm of Straight Line Features Matching on Aerial Imagery <i>FU Zhongliang, SUN Zhiqun</i>	97
Projective Reconstruction of Building Shape from Silhouette Images Acquired from Uncalibrated Cameras <i>Po-Lun Lai and Alper Yilmaz</i>	103

A Hybrid Method for Deriving DTMs from Urban DEMs <i>C. Baillard</i>	109
Estimation of Unknown Height with Artificial Neural Network on Digital Terrain Model <i>H.Karabork, O.K. Baykan, C. Altuntas, F.Yildz</i>	115
Using in Volume Computing of Digital Close Range Photogrammetry <i>M.Yakar and H.M. Yilmaz</i>	119
Digital Photogrammetry in Obtaining of 3D Model Data of Irregular Small Surfaces <i>H.Murat YILMAZ, Murat YAKAR and Ferruh YILDIZ</i>	125
A New Method Derived from Time-Vector Analysis for Generation of Elevation Information Based on Formation Flying Interferometric SAR Satellites <i>LI Yang, ZHANG Running, LI Guojun</i>	131
Evaluation of Relative Pose Estimation Methods for Multi-Camera Setups <i>Volker Rodehorst, Matthias Heinrichs and Olaf Hellwich</i>	135
Surface Reconstruction via Total Least-Squares Adjustment of the Semi-Variogram <i>Burkhard Schaffrin and Sibel Uzun</i>	141

WG III/3: Processing of Point Clouds from Laser Scanners and Other Sensors

A Flow to Generate DEM and Segment Building in Urban Areas from LIDAR Data <i>Lai Xudong, Wan Youchuan, Wei wei</i>	149
Data Filtering and Feature Extraction of Urban Typical Objects from Airborne LIDAR Point Cloud <i>Qihong ZENG</i>	153
Building Boundary Extraction Based on LIDAR Point Clouds Data <i>SHEN Wei</i>	157
Development of the Microstation-Based LIDAR Data Processing Software <i>Lichun SUI, Dan ZHAO, Qi XIN, Yibin ZHANG</i>	163
Least Squares Matching with Airborne LIDAR Data for Strip Adjustment <i>Jianwei Wu, Hongchao Ma, Qi Li</i>	167
LIDAR Data Reduction for Efficient and High Quality DEM Generation <i>X. Liu and Z. Zhang</i>	173
Airborne Laser Scanning Data Filtering Using Flakes <i>A. Borkowski and G. Józków</i>	179
Land Cover Classification Using Airborne Laser Scanning Data and Photographs <i>P. Tymkow and A. Borkowski</i>	185
Extracting of Spatial Information in the Environment of Irish Road Using Airborne Laser Scanning <i>S. A. Mumtaz and K. Mooney</i>	191
Section Approach for Representation of 3-Dimensional Point Clouds <i>Qisan Duan, Xuexia Chen and Wenxu Lü</i>	199
Building Reconstruction from LIDAR Data <i>C.Y. Wang and Z.M. Zhao</i>	203
Approximating LIDAR Ground Elevation Data by Higher-Order Tensor-Product B-Splines <i>S. Mukherj</i>	209
Rapid Extracting Pillars by Slicing Point Clouds <i>LUO De-an and WANG Yan-min</i>	215
An Approach for Filtering LIDAR Data in Coastal Vegetated Areas Using Intensity Information and Multiple Echoes <i>J. Goepfert, U. Soergel, C. Heipke and A. Brzank</i>	219

Building Reconstruction Using a Structural Description Based on a Formal Grammar <i>J. Milde, Y. Zhang, C. Brenner, L. Plümer and, M. Sester</i>	227
Application and Analyses of Airborne LIDAR Technology in Topographic Survey of Tidal Flat And Coastal Zone <i>ZhaoLijian, LaiZulong, LiYingcheng, XueYanli, LiaoMing, WuZhuolei, LiuPei, liuXiaolong</i>	233
Bare Earth Extraction from Airborne LIDAR Data Using Different Filtering Methods <i>A. Baligh, M. J. Valadan Zoej and A. Mohammadzadeh</i>	237
Impact of an Optimized Position and Orientation System on the Final Accuracy of LIDAR Data <i>M. Boba , V. Ussyshkin , M. Slater, M. Sitar and W. Szameitat</i>	241
An Approach from Point Cloud plus Feature Data to Grid DEM <i>Zhikuan Shi and Guoan Tang</i>	247
Quality checking of ALS Projects Using Statistics of Strip Differences <i>Camillo RESSL, Helmut KAGER and Gottfried MANDLBURGER</i>	253
Terrain Classification Using Airborne LIDAR Data and Aerial Imagery <i>O. Brattberg and G. Tolt</i>	261
Building Detection and Structure Line Extraction from Airborne LIDAR Data <i>C. K. Wang and, P.H. Hsu</i>	267
An Automatic Method Based on Gridding Segmentation for Trees' Classification in Forested Area <i>Chunjing yao and Hongchao ma</i>	273
A Review of Recent Range Image Reconstruction Algorithms <i>M. Ghane, M. Sattari, F. Samadzadegan and A. Azizi</i>	277
Building Extraction from Laser Scanning Data <i>F. Karsli and O. Kahya</i>	289
Semi-Automatic Orientation of Images With Respect to a Point Cloud System <i>David Novák</i>	295
Feature-Based Registration of Ground-Based LIDAR Point Clouds <i>J.J. Jaw and T.Y. Chuang</i>	303
Study on the Target Feature Extraction from LIDAR Point Clouds <i>Mei Zhou, Bing Xia, Guozhong Su, Lingli Tang and Chuanrong Li</i>	309
Classification of LIDAR Point Cloud and Generation of DTM from LIDAR Height and Intensity Data In Forested Area <i>Bao Yunfei, Li Guoping, Cao Chunxiang, Li Xiaowen, Zhang Hao, He Qisheng, Bai Linyan and Chang Chaoyi</i>	313
A Competition Based Roof Detection Algorithm from Airborne LIDAR Data <i>Huang Xianfeng</i>	319
LIDAR Data Classification Using Hierarchical K-Means Clustering <i>Nesrine Chehata, Nicolas David and Frédéric Bretar</i>	325
A Case Study: Workflow Analysis of Power Line Systems for Risk Management <i>I. Ituen , G. Sohn and A. Jenkins</i>	331
Tie Voxel Method and Its Quality for 3D Airborne LIDAR Block Adjustment <i>Jaan-Rong Tsay and Chin-Yeh Liu</i>	337
Derivation of Digital Terrain Model in Forested Area with Airborne LIDAR Data <i>F.F.Tang, J.N.Liu, X.H.Zhang and Z.M.Ruan</i>	343
Side Ratio Constrains Based Precise Boundary Tracing Algorithm for Discrete Point Clouds <i>HUANG Xianfeng, CHENG Xiaoguang, ZHANG Fan, GONG Jianya</i>	349
Contour Clustering Analysis for Building Reconstruction from LIDAR Data	

<i>Jing Zhang, Lelin Li, Qiuping Lu and Wanshou Jiang</i>	355
Integrated Registration of Range Images from Terrestrial LIDAR <i>Wang Yanmin and Wang Guoli</i>	361
Canopy Extraction Using Airborne Laser Scanning Data in Forestry Areas <i>C. Y. Lo, L. C. Chen.</i>	367
Measurements of Forest Inventory Parameters on Terrestrial Laser Scanning Data Using Digital Geometry and Topology <i>István Pál.</i>	373
Terrestrial Laser Scanning Applied for Reverse Engineering and Monitoring of Historical Buildings <i>I. Milev, L. Gruendig.</i>	381

WG III/4: Automatic Image Interpretation for City-Modeling

Gaze Tracking Control Using Active Stereo Camera <i>Masafumi NAKAGAWA, Eisuke ADACHI, Ryuichi TAKASE, Yumi OKAMURA, Yoshihiro KAWAI, Takashi YOSHIMI and Fumiaki TOMITA</i>	387
Image Re-Segmentation Applied to Urban Imagery <i>Thales S. Korting, Leila M. Fonseca, Luciano V. Dutra and Felipe C. Silva</i>	393
Semi-Supervised Incremental Learning of Hierarchical Appearance Models <i>SusanneWenzel andWolfgang Förstner.</i>	399
Building Extraction Based on Dense Stereo Match and Edison Algorithm <i>BingXuan GUO, ZhiChao ZHANG, YuanZheng SHAO and Qi Li.</i>	405
Buildings Detection and Extraction by Machine Learning <i>S. Y. Cui, Q. Yan , Z. J. Liu and M. Li.</i>	411
Accuracy of Lacunarity Algorithms in Texture Classification of High Spatial Resolution Images from Urban Areas <i>M. N. Barros Filho and F. J. A. Sobreira</i>	417
An Edge Detection Algorithms for Remote Sensing Image <i>Lixia Xue and Zuocheng Wang.</i>	423
Stochastic Motion and the Level Set Method in Semi-Automatic Building Detection <i>Qiu Zhen Ge, Li. Qiong, Zhang Chun Ling, Xin Xian Hui and Guo Zhang</i>	431
Scale-Dependent Adaptation of Image Analysis Models Incorporating Local Context Objects <i>Janet Heuwold, Kian Pakzad and Christian Heipke</i>	435
Object-Oriented Buinding Extraction by DSM and very High-Resolution Orthoimages <i>N. Jiang, J.X. Zhang, H.T. Li and X.G. Lin</i>	441
Selecting Appropriate Features for Detecting Buildings and Building Parts <i>Martin Drauschke and Wolfgang Förstner.</i>	447
Automatic Building Extraction from High Resolution Satellite Images Using Active Contour Mode <i>Salman Ahmady, Hamid Ebadi, M.J. Valadan Zouj and Hamid Abrishami Moghaddam</i>	453
A View-Geometric Approach To View And Occlusion Invariant Shape Recognition and Retrieval <i>Alper Yilmaz and Gabor Barsai</i>	457
Extract Profile of Urbanized Area in Beijing Assisted by Skewness <i>Li Xi, Guan Zequn and Shen Tiyan</i>	463
The Construction of Anti-Symmetrical Wavelet and Building Extraction from Remote Sensing Imagery <i>Yi LIN, Shaoming ZHANG, Feng XIE and Ying CHEN</i>	467
A Method for Urban Buildings Change Detection Based on Vertical Edges Extraction <i>Tiantian Feng, Mi Wang and Jianya Gong</i>	473

Case Study of the 5-Point Algorithm for Texturing Existing Building Models from Infrared Image Sequences <i>Hoegner Ludwig and Stilla Uwe</i>	479
Level of Detail in 3D Building Reconstruction from LIDAR Data <i>H. Arefi, J. Engels, M. Hahn and H. Mayer</i>	485
Automatic Peaks Extraction from Normalized Digital Surface Model (NDSM); <i>S. A. M. Hashemi</i>	491
Edge Extraction Algorithm Based on Linear Perception Enhancement <i>Fan Zhang, Xianfeng Huang, Xiaoguang Cheng and Deren Li</i>	497
Introduce a 1:500 map was made by the image of “GOOGLE EARTH” and its software <i>Ruan Wei,</i>	503

WG III/5: Models and Algorithms for Road Extraction and Traffic Monitoring

Road Extraction from High Resolution Satellite Image by Using Circle Area <i>Tsukasa Hosomura</i>	505
Road Extraction from High-Resolution Remote Sensing Image Based on Phase Classification <i>Cui Ni, Qin Ye, Bofeng Li and Shaoming Zhang</i>	509
Automatic Road Vector Extraction for Mobile Mapping Systems <i>WANG Cheng, T. Hassan, N. El-Sheimy and M. Lavigne</i>	515
Road Extraction from High Resolution Remote Sensing Image Based on Mathematics Morphology and Seed Growth <i>Hongbin Ma, Yahong Zhao and Qun He</i>	523
Vehicle Extraction Using Histogram and Genetic Algorithm Based Fuzzy Image Segmentation from High Resolution UAV Aerial Imagery <i>Yu Li</i>	529
Research on Road Extraction Semi-Automatically from High-Resolution Remote Sensing Image <i>Haitao ZHANG, Zhou XIAO and Qing ZHOU</i>	535
Semi-Automatic Extraction of Ribbon Road from High Resolution Remotely Sensed Imagery by Cooperation of Angular Texture Signature and Template Matching <i>X. G. Lin, J. X. Zhang, Z. J. Liu and J. Shen</i>	539
Road Network Detection by Growing Neuron Gas <i>Arpad Barsi</i>	545
Automatic Road Extraction from High Resolution Satellite Images Using Neural Networks, Texture Analysis, Fuzzy Clustering and Genetic Algorithms <i>M. Mokhtarzade, M. J. Valadan Zoej and H. Ebadi</i>	549
Automatic Traffic Monitoring from an Airborne Wide Angle Camera System <i>D. Rosenbaum, B. Charmette, F. Kurz, S. Suri, U. Thomas and P.Reinartz</i>	557
Road Extraction for the Update of Road Database in Suburban Areas <i>A. Grote and C. Heipke</i>	563
Research on the Building Shadow Extraction and Elimination Method <i>GUO Hai-tao, Zhang Yan, Lu Jun and Jin Guo-wang</i>	569
Spatial Road Network Extraction from Multi Spectral Remote Sensing Images with FCD <i>Yeming Fan</i>	575
Application of Neural Networks, Image Processing and Cad-Based Environments Facilities in Automatic Road Extraction and Vectorization from High Resolution Satellite Images <i>F. Farnood Ahmadi, M. J. Valadan Zoej, H. Ebadi and M. Mokhtarzade</i>	585
Traffic Monitoring from Airborne Full-Waveform LIDAR – Feasibility, Simulation and Analysis <i>W. Yao, S. Hinz and U. Still</i>	593

Automated Visual Traffic Monitoring and Surveillance Through a Network of Distributed Units <i>A. Koutsia, T. Semertzidis, K. Dimitropoulos, N. Grammalidis and K. Georgouleas</i>	599
Road Extraction from SAR Image Using an Improved Statistical Algorithm <i>M. Cheng and Q. Ye</i>	605
A New Framework of Moving Target Detection and Tracking for UAV Video Application <i>Wenshuai Yu, Xuchu Yu, Pengqiang Zhang and Jun Zhou</i>	609
Markov Random Fields (MRF) - Based Texture Segmentation for Road Detection <i>Ralf Reulke and Artur Lippok</i>	615
Semi-Automatic Extraction of Different-Shaped Road Centerlines from Ms and Pan-Sharped IKONOS Images <i>F. Ameri, A. M. Mobaraki and M. J. Valadan Zoej</i>	621

ICWG III/IV: Image Sequences

Automatic Recognition of Traffic Signs in Natural Scene Image Based on Central Projection Transformation <i>Ka Zhang, Yehua Sheng, Peifang Wang, Lin Luo, Chun Ye and Zhijun Gong</i>	627
Application of Robust Regression for Exterior Orientation of Video Images <i>N. Fukaya, T. Anai, H. Sato, N. Kochi, M. Yamada and H. Otani</i>	633
Dense Image Matching in Airborne Video Sequences <i>M. Gerke</i>	639
Automatic Registration of Airborne Image Sequences Based on Line Matching Approach <i>ZHANG Pengqiang, YU Xuchu, HAN Li and SONG Lihu</i>	645
Architectural Scene Rapid Reconstruction Based on Features <i>Y. Ding and J. Q. Zhang</i>	651
Automatic Edge Matching Across an Image Sequence Based on Reliable Points <i>Yixiang Tian, Markus Gerke, George Vosselman, Qing Zhu</i>	657
Real-Time Orientation of a PYZ-Camera Based on Pedestrian Detection in Video Data of Wide and Complex Scenes <i>T. Hoedl, D. Brandt, U. Soergel and M. Wiggenhagen</i>	663
Energy Function Behavior in Optimization Based Image Sequence Stabilization in Presence of Moving Objects <i>F. Karimi Nejadasl, B. G. H. Gorte, M. M. Snellen and S. P. Hoogendoorn</i>	669
Motion-Stereo Double Matching Restriction in 3D Motion Analysis <i>Zhang Chunsen</i>	675

Theme Session: ThS 7 - 3D City Modeling

Floating Model for Building Reconstruction from Topographic Maps and LIDAR Data <i>Sendo Wan</i>	681
Rasterizing Airborne Laser Scanning Point Clouds by Block Kriging <i>Wenxia Tan, Jonathan Li and Yu Li</i>	687
Building Boundary Extraction from High Resolution Imagery and LIDAR Data <i>Liang Cheng, Jianya Gong, Xiaoling Chen, Peng Han</i>	693
The Study on The Technique of The 3D GIS Modeling Based on The Digital Photogrammetry <i>Zhou Li, Sun Jia-long, Li Wei-xiao, Bai He and Chen Wei-wei</i>	699
A Method of Extracting Geometric Information from the Point Cloud of Building <i>Weian Wang, Bo Zheng and Xiang Li</i>	703
Building Roof Reconstruction by Fusing Laser Range Data and Aerial Images <i>J.J. Jaw and C.C. Cheng</i>	707

Building Detection and Reconstruction from Aerial Images

Dong-Min Woo, Quoc-Dat Nguyen, Quang-Dung Nguyen Tran, Dong-Chul Park and Young-Kee Jung, KOREA...
..... 713

Advantages and Disadvantages of the Hough Transformation in the Frame of Automated Building Extraction

G. Vozikis, J.Jansa 719

Fusion of Hyperspectral Images and LIDAR-Based DEMs for Coastal Mapping

A. Elaksher..... 725

Semiautomatic Extraction of 3D Curves Based on Snakes and Generalized Point Photogrammetry from Aerial Imagery

Yongjun Zhang, Quanye Du..... 731

Monoplotting – a Semi-Automated Approach for 3D Reconstruction from Single Satellite Image

Xiaojing Huang, Leong Keong KWOH 735

Theme Session: ThS 22 - Automation in Image Analysis

Acquiring Initial Value of Multi-View Metrical Data Integration

Zheng Li, Zhang Jiangqing, Yuejun Luo..... 741

Hybrid Measurement Scenarios in Automated Close-Range Photogrammetry

Simon Cronk, Clive S. Fraser..... 745

A Framework of Relative Navigation System for Non-Cooperative Target Using Double-CCD

JIANG Gangwu, JIANG Ting and WANG Jing 751