

First Announcement

"Three-Dimensional Mapping from InSAR and LIDAR"

*An ISPRS Workshop of Commission II, Working Group 2 - Systems for SAR and LIDAR Processing
Banff, Canada, 11-13 July 2001*

For workshop details see our WG II/2 web-site and follow the links:
www.intermaptechnologies.com/isprs_wgii_2/isprs_home.htm

Bryan Mercer, Chair WG II/2
Intermap Technologies Corporation
#1000, 736-8th Ave.S.W.
Calgary, Alberta, T2P 1H4
CANADA
Tel: + 1 403 266 0900
Fax: + 1 403 265 0499
E-mail: bmercerc@intermap.ca

Charles Toth, Co-Chair WG II/2
Center for Mapping
The Ohio State University
1216 Kinnear Road
Columbus, OH 43212
USA
Tel: +1 614 292 7681
Fax: +1 614 292 8062
E-mail: toth@cfm.ohio-state.edu

**The 1st International Symposium on
Digital Earth Moving, 2001 (DEM2001)**

Manno (Lugano), Switzerland, 5-7 September 2001

The DEM2001 Organising Committee cordially invites you to participate in DEM2001

<http://www.cimsi.cim.ch/dem2001>

The Keynote Speakers are:

- Stephen Ervin, Harvard University, USA
- Albert Brunner, Unique Airport, Switzerland
- Third keynote speaker to be announced.

The scientific program addresses the topics Terrain Visualisation, Computer-assisted Construction Processes, 3D Terrain Modelling, Real-time Simulation, Algorithms and Applications, with the Proceedings published by Springer Verlag as part of their Lecture Notes in Computer Science Series (LNCS).

In addition, a 'hands-on' workshop is being planned, featuring products from the following sponsoring companies:

- Trimble
- Caterpillar
- AutoDesk
- Bentley
- TopCon

Registration details are available for download at: <http://www.cimsi.cim.ch/dem2001/regs.html>.

Conference on Time and Space

devoted to Global Monitoring for World Heritage Sites' Periodic Reporting System

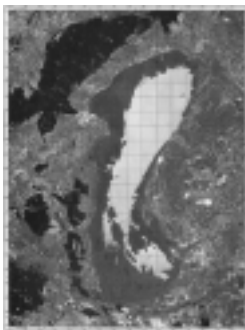
Approved ISPRS Commission VII event

Sopron, Hungary, 6-8th September 2001



The General Conference of UNESCO adopted the Convention Concerning the Protection of the World Cultural and Natural Heritage (the World Heritage Convention) in 1972. To date, 161 countries have adhered to the Convention, making it one of the most universal international legal instruments for the protection of the cultural and natural heritage, which reflects global responsibility. The World Heritage Committee, at its twenty-second session held in 1998, invited States Parties to submit periodic reports every six years, on the application of the Convention and the state of conservation of world heritage properties. The periodic reporting system provides up-dated information about the properties to record the changing circumstances and state of conservation, furthermore it provides a mechanism for regional co-operation and exchange of information and experiences between State Parties. In order to facilitate the preparation and examination of the reports, the Committee requested to develop regional strategies for the periodic reporting system.

On the very same session the Committee requested that the format of geographic information to be presented in periodic reports should be further examined, since the accuracy and detail in maps and boundary information submitted with many of the early nominations was inadequate for modern mapping purposes. In order to improve the quality of mapping and presentation of geographic information for world heritage properties, recommendations should be made on the desired types of maps and geographic descriptions that should form part of the report, on the possible mechanisms for collecting maps where adequate information is not currently available, on monitoring and change detection for preservation and development of world heritage sites.



Lake Fert (Neusiedler See) near to Sopron Photomap courtesy by VÁTI, 2001

properties, recommendations should be made on the desired types of maps and geographic descriptions that should form part of the report, on the possible mechanisms for collecting maps where adequate information is not currently available, on monitoring and change detection for preservation and development of world heritage sites.

The First Periodic Reporting Cycle (2000-2005) is a strategic challenge for the whole GIS and remote sensing community, since it could not yet play the role it should, to provide

the needed tool for governments, municipalities, local communities, investors and developers, who are all involved at the world heritage sites. Their education, training and sensitivity are key to the sustainable resource management at the most precious cultural and natural sites of the world. The main objective of this NATO ARW is to bring togeth-

er scientists and interested parties to discuss aspects of monitoring and change detection of world heritage sites and to draft guidelines for a unified GIS database, in order to help new site nominations and improve disaster-monitoring capacity for site managers and national authorities.

As this topic is very complex, it needs expertise of many aspects. To meet the goals we invited speakers from different scientific fields: remote sensing, GIS, geography, cartography, architecture, landscape design, archaeology. Besides further experts of world heritage sites are invited. Due to this diversity, the topic of the workshop will be approached in a multidisciplinary way, so the problems can be discussed very effectively. The workshop will be organised in Sopron, near the joint Austrian-Hungarian Lake Fert (Neusiedl) National Park, nominated to be a world heritage site, which can provide the location of the case study of this event. We will organise a field trip to visit this area, to take ideas and to discuss practical problems arisen during the sections of the workshop on the site as well.



Organising Committee

Chair: Dr. Béla Márkus, Department of Geo-informatics, College of Surveying and Land Management, University of West Hungary, Hungary

Dr. Ádám Kertész, Geographical Research Institute, Hungarian Academy of Sciences, Hungary

Ferenc Nemeth, Hungarian Office for World Heritage Sites, Hungary

Josef Strobl, Centre for Geographic Information Processing, Department of Geography and Geoinformation, University of Salzburg, Austria

Reinfried Mansberger, University for Agricultural Sciences, Vienna, Austria

Peter Winkler, FÖMI Remote Sensing Centre, Budapest, Hungary (contact for ISPRS WG VII/4)

Dr. Gabor Remetey-Fülöpp, Department of Lands and Mapping, Ministry of Agriculture and Regional Development

For more information:

Conference administrator:

Ms. Eszter Boda (be@cslm.hu) at Department of Geo-informatics College of Surveying and Land Management, University of West Hungary Tel: +36 22 315 125/ext104, Fax: +36 22 327 697

<http://geoinfo.cslm.hu>

Joint International Symposium on GeoSpatial Theory, Processing and Applications

First Announcement and Call for Papers

Ottawa Congress Centre / Westin Hotel Complex, Ottawa, Canada from 9-12 July 2002

You are cordially invited to participate in the 2002 Joint International Symposium and Exhibition on 'GeoSpatial Theory, Processing and Applications'. This collaborative symposium has been planned to foster closer relations and provide opportunities for greater interaction among the geomatics communities especially among those involved in research, development, applications, or management of geo-spatial data and information. Jointly the ISPRS Commission IV 2002 Symposium, the Spatial Data Handling 2002 Symposium and the 95th Annual Geomatics Conference of the Canadian Institute of Geomatics (CIG) will be held together in Ottawa, Canada between 9-12 July 2002. Tutorials and workshops are scheduled for the 8th of July 2002.

Symposium Organisers

This International Joint Symposium is co-organised by:

- ISPRS Commission IV: Spatial Information Systems and Digital Mapping, (www.commission4.isprs.org)
- IGU Commission on Geographic Information Science, (www.hku.hk/cupem/igugisc)
- Canadian Institute of Geomatics, (www.cig-acsg.ca) with the support of Natural Resources Canada, Geomatics Canada (www.geocan.nrcan.gc.ca)

Symposium Location

The venue of the Symposium is the Ottawa Congress Centre / Westin Hotel complex located beside the Rideau Canal in the centre of Ottawa, Canada's national capital. It is within walking distance of hotels, restaurants, shopping centres, the Parliament Buildings, the National Arts Centre, the National Gallery of Canada, museums and numerous cultural attractions. There are various seasonal festivals and also natural destinations such as the Gatineau Park and the Ottawa River.

ISPRS Commission IV 2002 Symposium

The International Society for Photogrammetry and Remote Sensing (ISPRS) is a non-governmental international organisation, devoted to the development of international co-operation for the advancement of knowledge, research, development, education and training in photogrammetry, remote sensing and spatial information sciences, their integration and applications, to contribute to the well-being of humanity and the sustainability of the environment.

ISPRS Commission IV addresses science, technology and applications and promotes excellence in the fields of spatial information science and systems, digital mapping from

air- and space-borne sensors, and integration of remotely sensed imagery with spatial information systems. The major emphasis of the Commission IV Symposium is in the transition from data, through information, to knowledge for better understanding of our spatial environment.

The topics of the ISPRS Commission IV Symposium will focus on the Terms of Reference of Commission IV, which are:

- Fundamentals of spatial modelling and spatial data structures
- Integration of image analysis and spatial information systems
- Spatial database design and spatial data access
- Metadata and clearing houses
- Dynamic spatial information systems and spatial revision processes
- Digital landscape modelling and visualization, orthoimages, digital terrain models and 3D city models
- Interfacing 3D city models and Computer Aided Facility management
- Spatial database generation from SAR, interferometric SAR, lidar lasers, and other aerial and satellite sensor systems
- Digital topographic, thematic and global mapping
- Extraterrestrial mapping

and on the scientific and technical activities of ISPRS Commission IV Working Groups (WG):

- WG IV/1: Spatial and temporal data modelling and analysis
- WG IV/2: Federated databases and interoperability
- WG IV/3: Data generalization and data mining
- WG IV/4: Spatial data infrastructures
- WG IV/5: Image-based geospatial databases
- WG IV/6: Landscape modelling and visualization
- WG IV/7: Data integration and digital mapping
- WG IV/8: Global environmental databases
- WG IV/9: Extraterrestrial mapping

Inter-Commission WG

- IC WG II/IV: Systems for automated geo-spatial data production and updating from imagery

Spatial Data Handling 2002 Symposium

The International Symposium on Spatial Data Handling (SDH) is the premier research forum for Geographic Information Science (GISc) of the International Geographic Union (IGU). The SDH first started in 1984, and following the first symposium have been held every two years since that time.

The SDH symposia have become the bi-annual focal point for advances in GIS research. SDH has been established to bring together in an intimate setting an international group of interdisciplinary researchers who are working at the cutting edge of new approaches of handling geographic data. It offers a unique opportunity to exchange ideas, and present research progress and results. The presentations at SDH are generally considered to represent the state of the art in this field.

SDH focuses on the following main topics:

- Visualisation
- Representation
- Spatial Reasoning and Data Mining
- Spatial Relationships, Analysis, and Modelling
- Uncertainties and Errors
- Spatio -Temporal Models
- Landscape Modelling
- SAR Applications
- Urban Modelling and Applications
- DEM and Terrain Modelling
- Remote Sensing
- Internet and WEB GIS
- Mobile GIS
- Metadata and Data Structure

95th CIG Annual Geomatics Conference

The Canadian Institute of Geomatics (CIG) is the national, societal home for geomatics professionals, technologists and technicians and is devoted to advancing the development of geomatics in Canada. Founded in 1882, CIG has 17 branches nationwide which include land surveyors, hydrographers, photogrammetrists, engineering and geodetic surveyors, remote sensing specialists, GIS/LIS specialists, cartographers, equipment manufacturers and suppliers, and persons in related fields of engineering, planning, natural resources and environmental science.

CIG represents the Canadian geomatics community through membership in three international organisations: Fédération internationale des géomètres, the International Society for Photogrammetry and Remote Sensing, and the International Cartographic Association.

The CIG Annual Geomatics Conferences are devoted to advancing the development of geomatics in Canada. The 95th CIG Annual Geomatics Conference will focus on the following main topics:

- Photogrammetry and Remote Sensing

- GIS
- GPS
- Mobile mapping
- Web-based mapping
- Hydrography
- Cartography
- Geodesy and control surveys
- Engineering and mining surveys
- Cadastre and LIS
- Legal surveys
- Laser altimetry and Digital Elevation Models
- RADARSAT
- GeoConnections
- GEOIDE

Important Dates

For ISPRS Commission IV 2002 Symposium	
Deadline for extended abstracts (750-1000 words)	15 November 2001
Notification of acceptance of papers and posters	15 January 2002
Deadline for Young Author's paper Award (full paper)	1 March 2002
Deadline for submission of final papers	15 March 2002

For SDH 2002 Symposium	
Deadline for paper submission	1 October 2001
Notification of acceptance of papers	January 15, 2002
Deadline for submission of final paper	15 March 2002

For the 95th Annual CIG Geomatics Conference	
Deadline for abstracts	November 15, 2001
Notification of acceptance of papers and posters	15 January 2002
Deadline for submission of final papers	15 March 2002

Guidelines for Paper Submission

Guidelines and procedures for the submission of abstracts and papers will be posted as soon as they become available on the Symposium's web-site: www.geomatics2002.org

Information and Inquiries

For information on registration, sponsorship, exhibition, workshops, accommodations and general inquiries, please visit: www.geomatics2002.org or contact:

Tom Herbert
Executive Director
Canadian Institute of Geomatics
1390 Prince of Wales, Suite 400
Ottawa, Ontario
CANADA K2C 3N6
Tel.: +1 613 224-9851
Fax.: +1 613 224-9577
E-mail: exdircig@netrover.com