

THE INTERNATIONAL ARCHIVES OF THE PHOTOGRAMMETRY, REMOTE SENSING AND SPATIAL INFORMATION SCIENCES
ARCHIVES INTERNATIONALES DE PHOTOGRAMMÉTRIE, DE TÉLÉDÉTECTION ET DE SCIENCES DE L'INFORMATION SPATIALE
INTERNATIONALES ARCHIV FÜR PHOTOGRAMMETRIE, FERNERKUNDUNG UND RAUMBEZOGENE INFORMATIONSWISSENSCHAFTEN

VOLUME
VOLUME
BAND

XXXVI

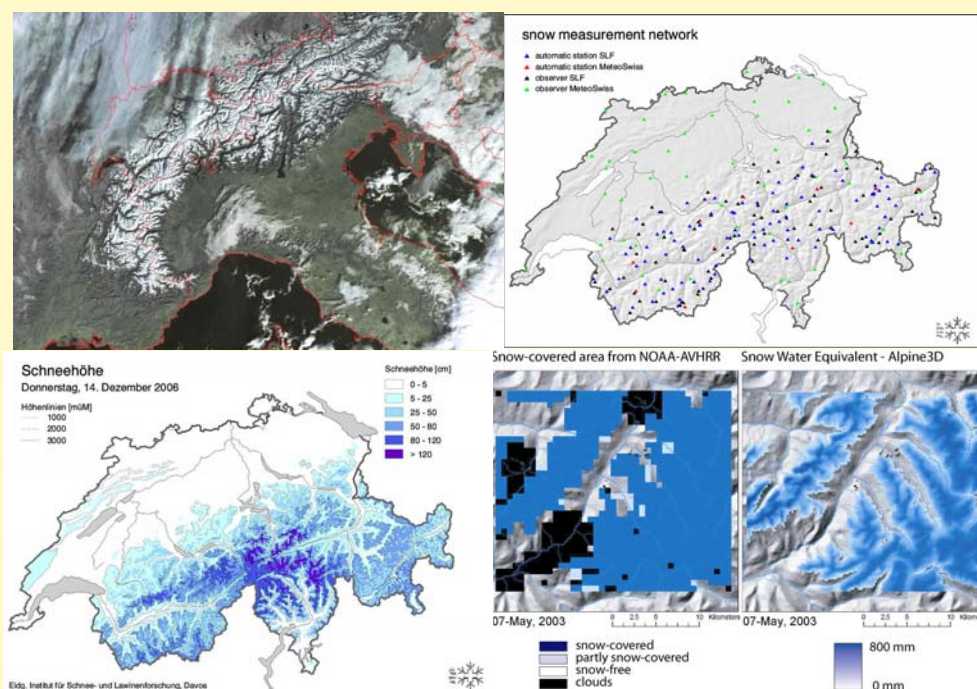
PART
TOME
TEIL

7 / C50

10th International Symposium on Physical Measurements and Signatures in Remote Sensing (ISPMSRS'07)

Davos, Switzerland

12 – 14 March 2007



Editors

Michael Schaepman, Shunlin Liang, Nikée Groot and Mathias Kneubühler

Organisers

ISPRS WG VII/1 "Fundamental Physics and Modelling"
Wageningen University, The Netherlands
Maryland University, USA
University of Zurich, Switzerland
PMOD/WRC, Switzerland

Sponsors

European Space Agency (ESA)
Swiss Academy of Sciences
Wageningen UR / Centre for Geo-Information

HYRESSA / EU FP6
IEEE GRSS
University of Zurich / RSL

PAPER SUBMISSIONS (PRESENTATIONS AND TALKS)

First Author	Co-Authors	TITLE	No.
S. Briggs		NEW SCIENTIFIC CHALLENGES FOR ESA'S LIVING PLANET PROGRAMME	T1
G. Guyot		EVOLUTION OF RESEARCH ORIENTATION IN THE DOMAIN OF SPECTRAL SIGNATURES	T2paper, T2pres.
W. Schmutz		SPACE EXPERIMENTS OF PMOD/WRC TO MEASURE THE SOLAR CONSTANT AND THE INFLUENCE OF THE SOLAR IRRADIANCE ON THE TERRESTRIAL CLIMATE	T3
J.-L. Widlowski	M. Robustelli M. Disney J.-P. Gastellu-Etchegorry T. Lavergne P. Lewis E. Martin P. R. J. North B. Pinty M. Taberner R. Thompson M.M. Verstraete	THE RAMI ON-LINE MODEL CHECKER (ROMC)	T9
T. Quaife	P. Lewis M. Disney M. de Kauwe M. Williams B. Lawc	ASSIMILATING REFLECTANCE DATA INTO A ECOSYSTEM MODEL TO IMPROVE ESTIMATES OF TERRESTRIAL CARBON FLUX.	T11
K. Ma	F. Baret P. Barroy L. Bousquet	A LEAF OPTICAL PROPERTIES MODEL ACCOUNTING FOR DIFFERENCES BETWEEN THE TWO FACES	T13
P. Lewis	M. Disney Y. Knyazikhin T. Quaife M. Schull	MODELLING CANOPY REFLECTANCE WITH SPECTRAL INVARIANTS	T14
M.I. Disney	P. Lewis	SPECTRAL INVARIANT BEHAVIOUR OF A COMPLEX 3D FOREST CANOPY	T15
Z. Malenovský	R. Zurita-Milla L. Homolová E. Martin M.E. Schaepman J.P. Gastellu-Etchegorry R. Pokorný J.G.P.W. Clevers	RETRIEVAL OF CONIFEROUS CANOPY CHLOROPHYLL CONTENT FROM HIGH SPATIAL RESOLUTION HYPERSPECTRAL DATA	T17
N.V. Shabanov	D. Huang Y. Knyazikhin R.B. Myneni	STOCHASTIC RADIATIVE TRANSFER MODEL FOR MIXTURE OF DISCONTINUOUS VEGETATION CANOPIES	T19
M. Rast		GEO (GROUP ON EARTH OBSERVATIONS) AND ITS GLOBAL EARTH OBSERVATION SYSTEM OF SYSTEMS (GEOSS)	T22

S.L. Ustin		PLANS FOR THE U.S. NATIONAL ECOLOGICAL NETWORK:-THE CONTRIBUTION OF REMOTE SENSING	T23
R. Wolfe		PRODUCTION AND DISTRIBUTION OF NASA MODIS REMOTE SENSING PRODUCTS	T25
J. Nieke	The HYRESSA Team	USER-DRIVEN REQUIREMENTS OF THE EUROPEAN HYPERSPECTRAL REMOTE SENSING COMMUNITY	T26
W. Verhoef		A BAYESIAN OPTIMISATION APPROACH FOR MODEL INVERSION OF HYPERSPECTRAL-MULTIDIRECTIONAL OBSERVATIONS: THE BALANCE WITH A <i>PRIOR</i> INFORMATION	T27
F. M. Danson	C. Giacosa R.P. Armitage	TWO-DIMENSIONAL FOREST CANOPY ARCHITECTURE FROM TERRESTRIAL LASER SCANNING	T28
G. Sun	K.J. Ranson J. Masek A. Fu D. Wang	PREDICTING TREE HEIGHT AND BIOMASS FROM GLAS DATA	T30

PAPER SUBMISSIONS (POSTERS)

First Author	Co-Authors	TITLE	No.
M.D. Steven	T.J. Malthus F. Baret	INTERCALIBRATION OF VEGETATION INDICES - AN UPDATE	P2
A. Riaza	C. Ong A. Müller	PYRITE MINE WASTES HYPERSPECTRAL MONITORING AS A TOOL TO DETECT CLIMATE CHANGE	P4
E. Ben-Dor	A. Chudnovski	REFLECTANCE SPECTROSCOPY IN THE 400-2400 NM TO ASSESS SETTLED DUST IN DIFFERENT URBAN ENVIRONMENTS	P5
R. Zurita-Milla	L. Gómez-Chova J.G.P.W. Clevers M.E. Schaepman G. Camps-Valls	MULTITEMPORAL UNMIXING OF MERIS FR DATA	P6
B.H. Menze	J.A. Ur	CLASSIFICATION OF MULTISPECTRAL ASTER IMAGERY IN THE ARCHAEOLOGICAL SURVEY FOR SETTLEMENT SITES OF THE NEAR EAST	P8
C.G. Marston	R.P. Armitage F.M. Danson P. Giraudoux A. Ramirez P.S. Craig	SPATIO-TEMPORAL MODELLING OF SMALL MAMMAL DISTRIBUTIONS USING MODIS NDVI TIME-SERIES	P9
A. Ramirez	R.P. Armitage F.M. Danson C.G. Marston E.Y. Ogunbadewa	WEB-BASED MODEL FOR ANALYSIS OF TIME SERIES REMOTELY SENSED DATA	P10

	M. Yebra		
A. Gidudu	H. Ruther	COMPARISON OF FEATURE SELECTION TECHNIQUES FOR SVM CLASSIFICATION	P11
J.G.P.W. Clevers	L. Kooistra M.E. Schaepman	CANOPY WATER CONTENT RETRIEVAL FROM HYPERSPECTRAL REMOTE SENSING	P12
S. Lachérade	C. Miesch D. Boldo X. Briottet C. Valorge H. Le Men	DEVELOPMENT OF AN INVERSION CODE, ICARE, ABLE TO EXTRACT URBAN AREAS GROUND REFLECTANCES	P13
N. Sánchez	R. González J. Prado J. Martínez-Fernández C. Pérez-Gutiérrez	ESTIMATING VEGETATION PARAMETERS OF CEREALS USING AN ASTER 1A IMAGE	P16
D. Odermatt	T. Heege J. Nieke M. Kneubühler K. Itten	CONSTITUTION OF AN AUTOMIZED PROCESSING CHAIN TO ANALYSE A MERIS TIME SERIES OF SWISS LAKES	P17
O. Frey	F. Morsdorf E. Meier	TOMOGRAPHIC SAR IMAGING OF A FORESTED AREA BY TIME-DOMAIN BACK-PROJECTION	P23
L. Kooistra	L. Sanchez-Prieto H.M. Bartholomeus M.E. Schaepman	REGIONAL MAPPING OF PLANT FUNCTIONAL TYPES IN RIVER FLOODPLAIN ECOSYSTEMS USING AIRBORNE IMAGING SPECTROSCOPY DATA	P27
B. Koetz	F. Morsdorf T. Curt S. van der Linden L. Borgniet D. Odermatt S. Alleaume C. Lampin M. Jappiot B. Allgöwer	FUSION OF IMAGING SPECTROMETER AND LIDAR DATA USING SUPPORT VECTOR MACHINES FOR LAND COVER CLASSIFICATION IN THE CONTEXT OF FOREST FIRE MANAGEMENT	P29
M. Schaepman	M. Hoogerwerf J. van der Vegte F. van der Wel W. Som de Cerff R. van Hees B. Domenico S. Nativi O. Wilhelmi	THE RELEVANCE AND USE OF ATMOSPHERIC DATA ACCESS FOR THE GEOSPATIAL USER COMMUNITY (ADAGUC)	P30
Y. Zeng	M.E. Schaepman B. Wu J.G.P.W. Clevers A.K. Bregt	USING LINEAR SPECTRAL UNMIXING OF HIGH SPATIAL RESOLUTION AND HYPERSPECTRAL DATA FOR GEOMETRIC-OPTICAL MODELLING	P31
G. Schaepman-Strub	T. Painter M. Schaepman	ALBEDO ASSESSMENT AND EVALUATION OVER ARCTIC SIBERIAN TUNDRA	P35
L. Waser	M. Baltsavias H. Eisenbeiss	CHANGE DETECTION IN MIRE ECOSYSTEMS: ASSESSING	P36

	C. Ginzler A. Gruen M. Kuechler P. Thee	CHANGES OF FOREST AREA USING AIRBORNE REMOTE SENSING DATA	
Z. Kugler	T. de Groeve G.R. Brakenridge E. Anderson	TOWARDS A NEAR-REAL TIME GLOBAL FLOOD DETECTION SYSTEM (GFDS)	P37
M. Ozdogan	G. Gutman	TOWARDS GLOBAL MAPPING OF IRRIGATED AGRICULTURE	P40
A.E. Akay	I.R. Karas R. Gundogan	CLASSIFICATION OF TREE AND SHRUB SPECIES IN KSU RESEARCH AND APPLICATION FOREST IN KAHRAMANMARAS, TURKEY	P41
C. Gagliano	F. de Natale F. Incerti F. Maselli	ALTERNATIVE APPLICATION OF THE K-NN METHOD FOR MAPPING FOREST COVER TYPE	P43
B. Koetz	M. Kneubühler S. Huber J. Schopfer F. Baret	RADIATIVE TRANSFER MODEL INVERSION BASED ON MULTI-TEMPORAL CHRIS/PROBA DATA FOR LAI ESTIMATION	P45
J. Sobrino	J.C. Jiménez-Muñoz M. Gómez A. Barella-Ortiz G. Sòria Y. Julien M.M. Zaragova-Ivorra J.A. Gómez E. de Miguel M. Jiménez B. Su W. Timmermans J. Moreno L. Guanter R. Bianchi	APPLICATION OF HIGH-RESOLUTION THERMAL INFRARED REMOTE SENSING TO ASSESS LAND SURFACE TEMPERATURE AND EMISSIVITY IN DIFFERENT NATURAL ENVIRONMENTS	P47
J. Verrelst	R. Zurita-Milla B. Koetz J.G.P.W. Clevers M.E. Schaepman	ANGULAR UNMIXING OF PHOTOSYNTHETIC AND NON-PHOTOSYNTHETIC VEGETATION WITHIN A CONIFEROUS FOREST USING CHRIS-PROBA	P49
A. Damm	P. Hostert	MODELLING REFLECTANCE OF URBAN CHESTNUT TREES: A SENSITIVITY ANALYSIS OF MODEL INVERSION FOR SINGLE TREES	P51
M. Jiménez	E. de Miguel J.A. Gómez J. A. Sobrino J.C. Jiménez-Muñoz J. Chico E. Prado C. Robles	AIRBORNE HYPERSPECTRAL SCANNER (AHS) SPECTRAL EMISSIVITY RETRIEVAL IN 8-13 μM	P55
G. Sun	D. Liu K.J. Ranson B. Koetz	SIMULATION STUDIES OF THE EFFECT OF FOREST SPATIAL STRUCTURE ON INSAR SIGNATURE	P57
F. Daumard	Y. Goulas	ATMOSPHERIC CORRECTION OF	P58

	A. Ounis R. Pedros I. Moya	AIRBORNE PASSIVE MEASUREMENTS OF FLUORESCENCE	
V.C. Vanderbilt	C.S.T. Daughtry A. Russ S.L. Ustin J.A. Greenberg	SHOULD WE EXPECT ANOMALOUS DISPERSION IN THE POLARIZED REFLECTANCE OF LEAVES?	P59
S. Hancock	P. Lewis J.-P. Muller M. Disney	USING MONTE-CARLO RAY TRACING TO INVESTIGATE THE MEASUREMENT OF FOREST PARAMETERS WITH THE ECHIDNA™ LASER SCANNER	P60
E. Conejo	J.-P. Frangi S. Jacquemoud G. de Rosny	RAMIS: A BIOPHOTONIC PHYSIOLOGICAL PLANT SENSOR (FIELD RADIOMETER FOR CANOPY REMOTE SENSING)	P61
M. Bachmann	S. Holzwarth A. Müller	INFLUENCE OF LOCAL INCIDENCE ANGLE EFFECTS ON GROUND COVER ESTIMATES	P62
M. Pfeifer	M. Disney P. Lewis	SIMULATING CANOPY GAP FRACTION OF COMPLEX 3D FOREST SCENES OF <i>PICEA SITCHENSIS</i> (SITKA SPRUCE)	P63
M. Schlerf	W. Verhoef H. Buddenbaum J. Hill C. Atzberger A. Skidmore	COMPARING THREE CANOPY REFLECTANCE MODELS WITH HYPERSPECTRAL MULTI-ANGULAR SATELLITE DATA	P64
J. Keller	S. Bojinski A.S.H. Prevot	SIMULTANEOUS RETRIEVAL OF AEROSOL AND SURFACE OPTICAL PROPERTIES USING MULTI-ANGLE IMAGING SPECTRORADIOMETER (MISR) DATA	P66
J.-B. Feret	G. P. Asner C. François R. Martin S. L. Ustin S. Jacquemoud	AN ADVANCED LEAF OPTICAL PROPERTIES MODEL INCLUDING PHOTOSYNTHETIC PIGMENTS	P67
S. Zhao	L. Zhang L. Li	A METHOD FOR MEASURING THE PERMITTIVITY OF ARTIFICIAL FROZEN SOIL USING NETWORK ANALYZER	P70
T. Jackson	R. Bindlish J. Du M. Cosh L. Li P. Gaiser E. Kabela B. Hornbuckle	SOIL MOISTURE EXPERIMENTS 2005 (SMEX05): PASSIVE MICROWAVE POLARIMETRIC SIGNATURES OF SOIL MOISTURE AND VEGETATION	P72
S.G.R. Salim	N.P. Fox E.R. Woolliams R. Winkler H.M. Pegrum T. Sun K.T.V. Grattan	REFERENCE SPECTROMETRY FOR CALIBRATION OF OPTICAL EARTH OBSERVATION SYSTEMS	P73

F. Naseri	A.A. Darvishsefat H. Sobhani M. Namiranian	ESTIMATION OF FOREST STAND PARAMETERS IN DENSITY CLASSES IN ARID AND SEMI-ARID REGIONS USING LANDSAT ETM+ DATA	P75
S.K. Alavipanah	R. Amiri K. Khodaei	THE USE OF SPECTRAL SIGNATURES IN EXTRACTING INFORMATION FROM WATER QUALITY PARAMETERS IN THE LAKE URMIA, IRAN	P76
A. Bannari	A.M. Guedon A. El-Harti F.Z. Cherkaoui A. El-Ghmari A. Saquaque	SLIGHT AND MODERATE SALINE AND SODIC SOILS CHARACTERIZATION IN IRRIGATED AGRICULTURAL LAND USING MULTISPECTRAL REMOTE SENSING	P77
B. Seiler	M. Kneubühler B. Wolfgramm K.I. Itten	QUANTITATIVE ASSESSMENT OF SOIL PARAMETERS IN WESTERN TAJIKISTAN USING A SOIL SPECTRAL LIBRARY APPROACH	P78
A. Visscher von Arx	S. Huber M. Kneubühler K. Itten	LEAF AREA INDEX ESTIMATES OBTAINED FOR MIXED FOREST USING HEMISPHERICAL PHOTOGRAPHY AND HYMAP DATA	P79
S. Huber	M. Kneubühler B. Koetz J.T. Schopfer N.E. Zimmermann K.I. Itten	ESTIMATING NITROGEN CONCENTRATION FROM DIRECTIONAL CHRIS/PROBA DATA	P80
M. Jiménez	R. Díaz-Delgado P. Vaughan A. de Santis A. Fernández-Renau E. Prado O. Gutiérrez de la Cámara	AIRBORNE HYPERSPECTRAL SCANNER (AHS) A PRIORI MAPPING CAPACITY SIMULATION FOR THE <i>DOÑANA BIOLOGICAL RESERVE</i> SHRUBLANDS	P81
M. Eiden	S. van der Linden J.H. Schween C. Gerbig B. Neininger Y. Brunet N. Jarosz O. Traullé H. Geiss U. Rascher	ELUCIDATING PHYSIOLOGY OF PLANT MEDIATED EXCHANGE PROCESSES USING AIRBORNE HYPERSPECTRAL REFLECTANCE MEASUREMENTS IN SYNOPSIS WITH EDDY COVARIANCE DATA	P82
A. Psomas	M. Kneubühler K. Itten N.E. Zimmermann	HYPERSPECTRAL REMOTE SENSING FOR SEASONAL ESTIMATION OF ABOVEGROUND BIOMASS IN GRASSLAND HABITATS	P84
H.M. Pegrum	N.P. Fox E.J. Milton M. Chapman	DEVELOPMENT OF THE GONIO RADIOMETRIC SPECTROMETER SYSTEM TO CONDUCT MULTI-ANGULAR MEASUREMENTS OF TERRESTRIAL SURFACES	P90
J.T. Schopfer	S. Dangel M. Kneubühler	DUAL FIELD-OF-VIEW GONIOMETER SYSTEM FIGOS	P91

	K.I. Itten		
L. Homolová	Z. Malenovský J. Hanuš I. Tomášková M. Dvorská R. Pokorný	COMPARISON OF DIFFERENT GROUND TECHNIQUES TO MAP LEAF AREA INDEX OF NORWAY SPRUCE FOREST CANOPY	P95
A. Hüni	J. Nieke J. Schopfer M. Kneubühler K.I. Itten	2ND GENERATION OF RSL'S SPECTRUM DATABASE "SPECCHIO"	P98
B. Allgöwer		WELCOME BY SCIENCE CITY DAVOS – CUTTING EDGE RESEARCH IN A REMOTE PLACE	T0

ABSTRACT SUBMISSIONS

First Author	Co-Authors	TITLE	No.
G. Dedieu	A. Karnieli O. Hagolle H. Jeanjean F. Cabot P. Ferrier Y. Yaniv	THE VEN μ S MISSION: EARTH OBSERVATION WITH HIGH SPATIAL AND TEMPORAL RESOLUTION CAPABILITIES	T4
A. Lyapustin	Y. Wang	A GENERIC AEROSOL-SURFACE REFLECTANCE RETRIEVAL ALGORITHM FOR MODIS	T5
C. Borel	C. Spencer	ATMOSPHERIC CORRECTION OF AIRBORNE POLARIMETRIC IMAGERY USING VECTORIZED 6S	T6
F. Baret	M. Weiss P. Bicheron R. Lacaze M. Leroy	CYCLOPES PROTOTYPE V4 LAI, FAPAR AND FCOVER PRODUCTS DERIVED FROM VEGETATION AND AVHRR SENSORS: DESCRIPTION AND VALIDATION	T7
J.-P. Muller	R. Preusker J. Fischer M. Zühlke C. Brockmann N. Fomferra P. Regner	MERIS LAND SURFACE BRDF/ALBEDO RETRIEVAL USING DATA FUSION WITH MODIS BRDF AND ITS VALIDATION USING CONTEMPORANEOUS EO AND IN SITU DATA PRODUCTS	T8
S. Liang	J. Townshend R. Dickinson	A FRAMEWORK OF A REMOTE SENSING DATA ASSIMILATION SYSTEM	T10
B. Pinty	T. Lavergne M. Vossbeck T. Kaminski O. Aussedat R. Giering N. Gobron M. Taberner M.M. Verstraete J.-L. Widlowski	PREPARING FOR THE ASSIMILATION OF REMOTE SENSING PRODUCTS BY LARGE-SCALE MODELS WITH UPDATED LAND SURFACE PROCESS SCHEMES	T12
M. Möttus	M. Rautiainen	APPROXIMATING PHOTON	T16

	P. Stenberg	RECOLLISION PROBABILITY IN VEGETATION CANOPIES	
R. Fernandes	N. Rochdi D. Beal K. Shahid S. Leblanc M. Weiss F. Baret L. Vierling X. Chen A. Conley D. Deering T. Nilson P. Stenberg	CIRCUMPOLAR ASSESSMENT OF THE RELATIONSHIP BETWEEN INFRARED VEGETATION INDICES AND LEAF AREA INDEX IN FOREST	T18
H. Löwe	T. Jonas M. Lehning	ASSIMILATION OF MODIS SNOW DATA IN A DETAILED MODEL OF ALPINE SNOW DYNAMICS AND SNOW HYDROLOGY	T20
T.H. Painter	M.P. Cassidy	INFERENCE OF IMPURITY RADIATIVE FORCING IN SNOW FROM MULTISPECTRAL TO HYPERSPECTRAL IMAGERS	T21
F. Morsdorf	O. Frey B. Koetz E. Meier	MODELING OF SMALL FOOTPRINT AIRBORNE LASER SCANNING RETURNS USING RAY-TRACING AND L-SYSTEMS	T29
A. Royer	G. Picard M. Fily	NORMALIZATION OF MICROWAVE TIME SERIES OBSERVATIONS (1979 - 2005) : APPLICATION TO SURFACE MELTING ANALYSIS OVER ANTARCTICA AND SURFACE TEMPERATURE OVER CANADA/ALASKA	P1
J. Dozier	J. Frew T. Painter	SPACE-TIME SERIES OF MODIS SNOW COVER PRODUCTS FOR HYDROLOGIC SCIENCE	P3
A. Ansari Amoli	A. Alimohammadi	A NEW MULTITEMPORAL CLASSIFICATION APPROACH FOR LAND COVER MAPPING IN IRAN, BY USING HYPERSPECTRAL MODIS DATA	P7
C.C. Borel		REFLECTANCE RETRIEVAL IN SHADE USING ADJOINT RADIOSITY	P14
O. Hagolle	G. Dedieu V. Debaecker	RETRIEVAL OF AEROSOL OPTICAL DEPTH USING MULTI-DATE AND CONSTANT VIEWING ANGLE IMAGES FROM FORMOSAT2 AND VEN μ S	P15
S.R. Soofbaf	H. Fahimnejad M.J. Valadan Zoej B. Mojaradi	ANOMALY DETECTION ALGORITHMS FOR HYPERSPECTRAL IMAGERY	P18
A. Mac Arthur	C. MacLellan T. Malthus	DETERMINING THE DIRECTIONAL RESPONSE AND FIELD OF VIEW OF TWO FIELD SPECTRORADIOMETERS	P19
E. de Miguel	R. García	THE EFFECT OF NOISE IN AHS	P20

	A. Fernández-Renau	THERMAL BANDS IN THE RETRIEVAL OF PIXEL TEMPERATURE	
L. Quental	A. Sousa S. Marsh	HYPERSPERTRAL IMAGE FILTERING AND IMPLICATIONS FOR ENVIRONMENTAL SPECTRA RELATED TO MINING CONTAMINATION: EXAMPLE FROM S.DOMINGOS MINE, SE PORTUGAL	P21
H. Fahimnejad	S.R. Soofbaf A. Alimohammadi M.J. Valadan Zoej	PREPROCESSING EO-1 HYPERION HYPERSPERTRAL DATA	P22
M. Zappa	A. Morger T. Jonas A. Stoffel N. Foppa	OPERATIONAL ASSIMILATION OF SNOW DEPTH MAPS FOR IMPROVED REAL TIME RUNOFF NOWCASTING WITH SPATIALLY DISTRIBUTED HYDROLOGICAL MODELS	P24
N. Foppa	M. Zappa M. Stähli M. Lehning D. Gustafsson	INTERCOMPARISON BETWEEN MODELLED AND SATELLITE-DERIVED SNOW COVER EXTENT WITHIN THE ALPINE AND SUBALPINE ZONE OF THE SWISS ALPS	P25
G. Picard	L. Brucker M. Fily	MODELING MICROWAVE BRIGHTNESS TEMPERATURE IN ANTARCTICA.	P26
A.J.W. de Wit	C.A. van Diepen	CROP MODEL DATA ASSIMILATION WITH THE ENSEMBLE KALMAN FILTER FOR IMPROVING REGIONAL CROP YIELD FORECASTS	P28
L. Jia	M.H. Voogt C.M.J. Jacobs B.J.J.M. van den Hurk, , A. de Wit E. Moors	SEASONAL COMPARISON OF CARBON FLUX ESTIMATES FROM C-TESSEL MODEL AND MODERATE RESOLUTION IMAGING SPECTRORADIOMETER (MODIS) OVER SEVERAL BIOMES	P32
M. Schneebeli	U. Wandinger I. Matthis E. Brocard C. Mätzler	COMBINATION OF RAMAN LIDAR AND MICROWAVE RADIOMETER SENSED WATER VAPOUR DATA	P33
A. Omani	M.R. Saradjian	ABILITIES OF DEMETER SATELLITE IN OBSERVATION OF PHYSICAL SIGNATURES PERTURBATION OF IONOSPHERE ASSOCIATED WITH SEISMIC ACTIVITIES	P34
T. Lavergne	T. Kaminski B. Pinty M. Taberner N. Gobron M. Verstraete M. Vossbeck J.-L. Widlowski R. Giering O. Aussedat	APPLICATION TO MISR LAND BRFS OF THE RPV MODEL INVERSION PACKAGE TO ASSESS ENVIRONMENTAL PATTERNS	P38
F. Fontana	C. Rixen T. Jonas S. Wunderle	VALIDATION OF REMOTE SENSING NDVI TIME SERIES WITH GROUND BASED MEASUREMENTS FROM THE	P39

		AUTOMATED CLIMATE STATION NETWORK IMIS	
A. Baraldi	D. Simonetti V. Puzzolo S. Natali	A COMPLETELY AUTOMATIC SPECTRAL RULE-BASED PRELIMINARY CLASSIFICATION OF CALIBRATED LANDSAT 5 TM AND LANDSAT 7 ETM+ IMAGES SCALABLE TO ASTER, AVHRR, MODIS, SPOT-4, SPOT-5, AND SPOT VEGETATION IMAGERY	P42
S.M. Shahrokhy		SHADOWED FEATURE CLASSIFICATION IN HYPERSPECTRAL IMAGES	P44
T. Selige	U. Schmidhalter J. Böhner	TOPSOIL MAPPING USING HYPERSPECTRAL SENSING	P46
F. Baret	G. Billard O. Marloie A. Labouret	PAR@METER: A WIRELESS SYSTEM FOR FAPAR AND LAI CONTINUOUS MONITORING	P48
J.V. Martonchik	M. Bull V.T. Dang	A STUDY OF SURFACE DIRECTIONAL SHAPES USING MISR	P50
F. Baret	M. Weiss P. Bicheron R. Lacaze M. Leroy	CYCLOPES PROTOTYPE V4 LAI, FAPAR AND FCOVER PRODUCTS DERIVED FROM VEGETATION AND AVHRR SENSORS: DESCRIPTION AND VALIDATION	P52
R.B. Myneni	W. Yang R.R. Nemani A.R. Huete R.E. Dickinson Y. Knyazikhin K. Didan R. Fu R.I. Negrón Juárez S.S. Saatchi H. Hashimoto K. Ichii N.V. Shabanov B. Tan P. Ratana J.L. Privette J.T. Morisette E.F. Vermote D.P. Roy R.E. Wolfe M.A. Friedl S.W. Running P. Votava N. El-Saleous S. Devadiga Y. Su V.V. Salomonson	LARGE SEASONAL SWINGS IN LEAF AREA OF AMAZON RAINFORESTS	P53
A. Skidmore	J. Ferwerda O. Mutanga S. van Wieren M. Peel	PLANT BIOCHEMICAL MAPS OF FORAGE QUALITY	P54

	R. Grant H. Prins		
F. Veroustraete	W.W. Verstraeten K. Hufkens B. Gielen F. Colson	PHYSICAL MODELLING OF NIKON COOLPIX CAMERA RGB RESPONSES FOR APPLICATION IN NON-DESTRUCTIVE LEAF CHLOROPHYLL IMAGING	P56
M. Rautiainen	P. Stenberg T. Manninen M. Möttöus P. Voipio	FOREST REFLECTANCE MODELING IN THE ARCTIC REGION: RESULTS FROM A CASE STUDY IN FINLAND	P65
T. Warner	A. Almutairi D. Campagna M.D. Nellis	THE ROLE OF IMAGE PROPERTIES IN DETERMINING CHANGE DETECTION ACCURACY	P68
T.H. Painter	N.P. Molotch M.P. Cassidy M. Flanner K. Steffen	CONTACT SPECTROSCOPY FOR DETERMINATION OF STRATIGRAPHY OF SNOW OPTICAL GRAIN SIZE	P69
W. Wang	S. Liang	ESTIMATING CLEAR-SKY LAND SURFACE LONGWAVE RADIATION BUDGET FROM MODIS DATA	P71
V. Lakshmi	B. Hong F. Chen E. Small	IMPLEMENTATION OF BIOPHYSICAL FACTORS INTO THE LAND SURFACE AND ATMOSPHERE INTERACTION MODEL	P74
L.O. Anderson	Y. Malhi L. Aragão Y. Shimabukuro	SPATIAL VARIABILITY OF THE SPECTRAL PROPERTIES OF FOREST STRUCTURES OVER THE AMAZON	P83
H.-Y. Kim	S. Liang	ESTIMATION OF SURFACE SHORTWAVE RADIATION BUDGET FROM MODIS DATA	P85
K. Ma	F. Baret G. Jubelin P. Burger B. Roux S. Labbé J.M. Nolot	EFFECT OF CULTIVAR SPECIFICITIES ON THE RADIOMETRIC RESPONSE: QUANTIFICATION AND CONSEQUENCES FOR BIOPHYSICAL VARIABLES ESTIMATION IN WHEAT CROPS	P86
J. Dowens	T. Malthus L. Belyea	CLASSIFICATION OF BLANKET MIRE MICROHABITATS USING FIELD AND IMAGING SPECTROSCOPY	P87
M. Leroy	P. Bicheron R. Lacaze F. Niño F. Baret J.-L. Roujean O. Hagolle G. Dedieu F. Maignan F.-M. Bréon	THE POSTEL LAND SURFACE THEMATIC CENTER	P88
I. Reusen	The HYRESSA Team	HYRESSA: TOWARDS AN IMPROVED ACCESS TO HYPERSPECTRAL DATA IN EUROPE	P89
I. Moya	F. Daumard N. Moise	SPATIAL VARIABILITY AND ALTITUDE EFFECTS OF PASSIVE CHLOROPHYLL	P93

	Y. Goulas A. Ounis	FLUORESCENCE MEASUREMENTS OVER LA MANCHA (SPAIN) FIELDS	
A.A. Mac Arthur	T.J. Malthus	THE CHARACTERISATION OF HEATHER FOLIAGE AND CANOPIES BY HYPERSPECTRAL REFLECTANCE	P94
N. Gobron	B. Pinty O. Aussedat M. Taberner F. Mélin T. Lavergne M. Robustelli J.-L. Widlowski	VALIDATION OF FAPAR PRODUCTS DERIVED FROM OPTICAL SENSORS: METHOD AND RESULTS.	P96
E.J. Milton	Colleagues from the NCAVEO Partnership	THE NCAVEO 2006 CAL/VAL EXPERIMENT	P97

HYRESSA WORKSHOP

J.A. Gómez-Sánchez		THE ROLE OF PROTOCOLS AND STANDARDS IN HYPERSPECTRAL DATA ACQUISITION	H1
T. Malthus		OPPORTUNITIES FOR THE DEVELOPMENT OF A EUROPEAN HYPERSPECTRAL RESEARCH INFRASTRUCTURE	H2
J.-L. Brenguier		TRANS-NATIONAL ACCESS AT EQUAL TERMS TO NATIONAL RESEARCH INFRASTRUCTURES IN EUROPE: THE CASE OF RESEARCH AIRCRAFT FOR ENVIRONMENTAL STUDIES	H3
B. Weiss		EUROPEAN RESEARCH INFRASTRUCTURES FRAMEWORK PROGRAMME 7	H4