

# Webcartography

in *e*-ducation at ITC

Barend Köbben  
kobben@itc.nl

Webcartography

# Webcartography

why...?

changing  
cartography

=> new channel for  
data dissemination

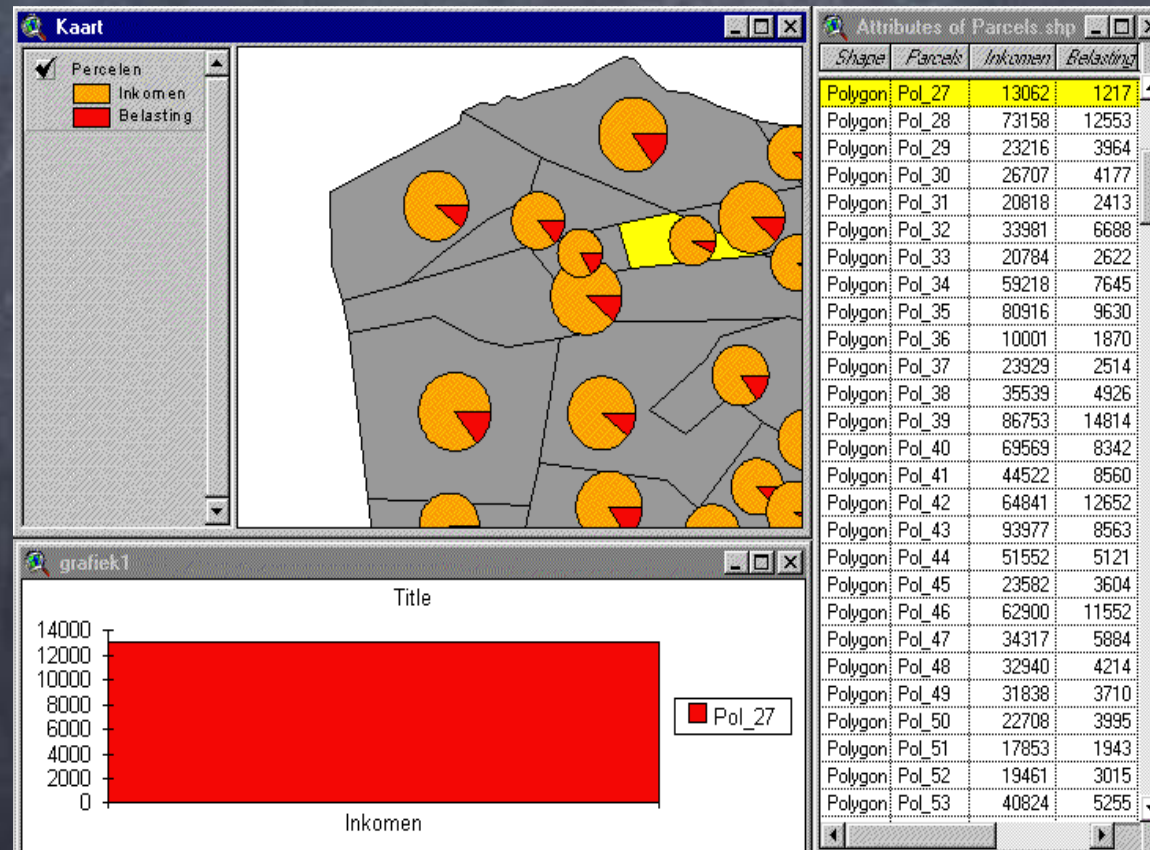


changing  
cartography

=> new kinds of  
maps

# new kinds of maps:

# interactive maps

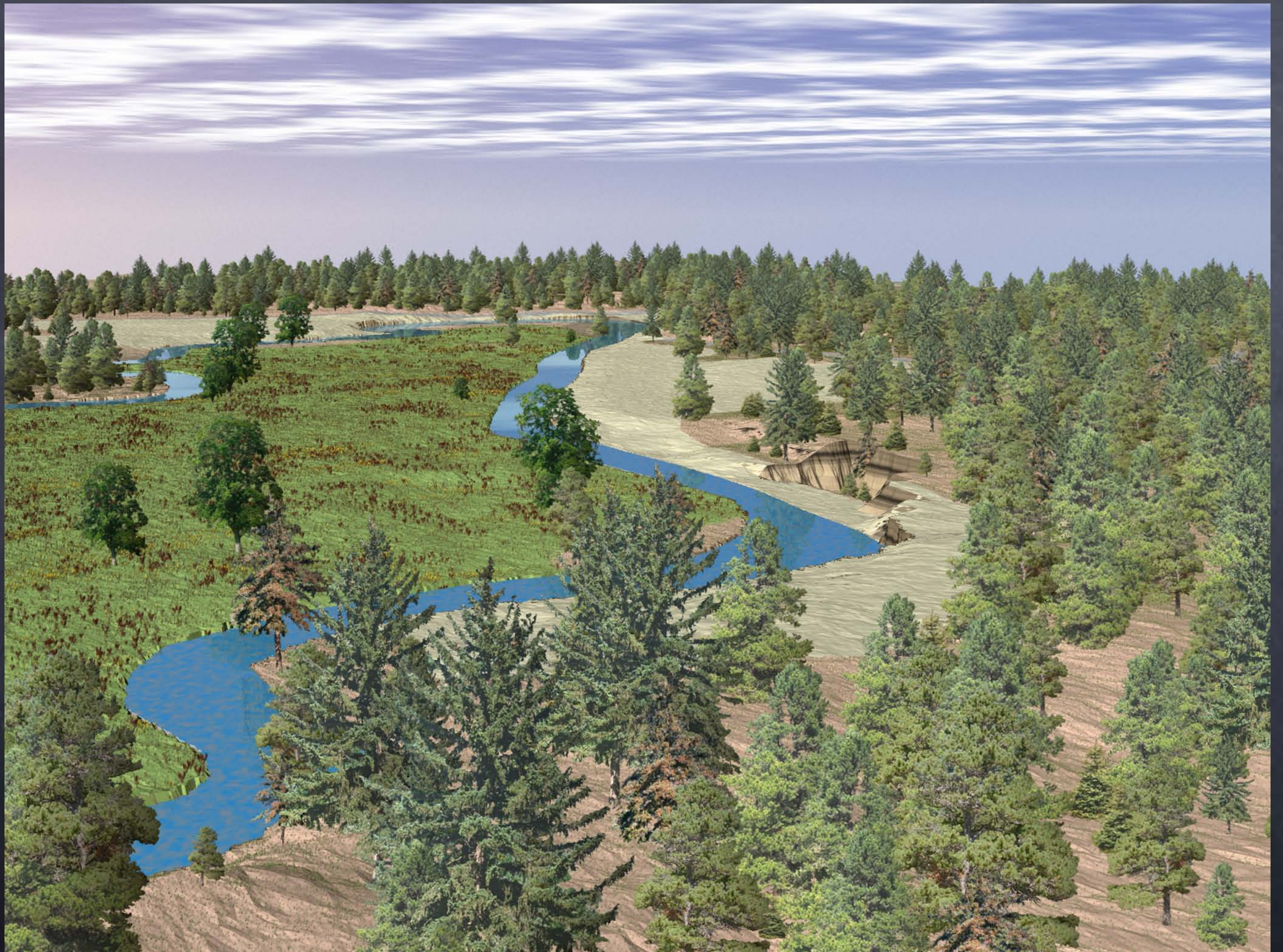


new kinds of maps:

unconventional,  
realistic maps

=> virtual worlds







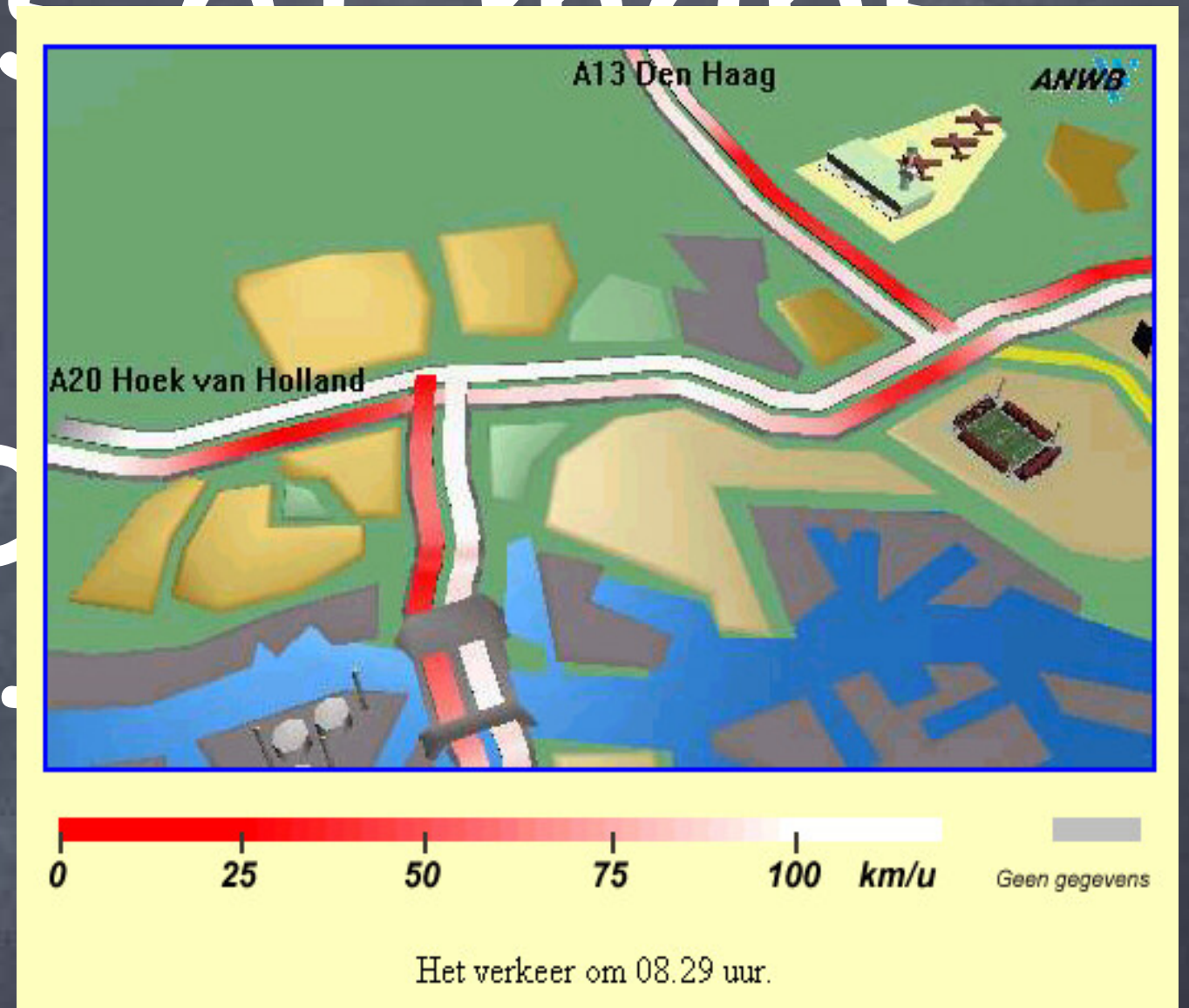
new kinds of maps:

depiction of  
movement & change

=> animated maps



no kinds of maps:



=> animated maps



*e-ducation*

Geo-webservices  
& web-clients

e-ducation



Geo-webservices  
& web-clients

e-ducation

Open Standards &  
interoperability

SDI light

OSGEO stack



SDI light

.....?

SDI



SD



SDI





SDI light

SDI<sup>light</sup>

OSGEO stack



OSGEO stack



OSGEO stack



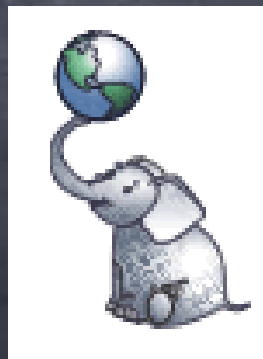
OSGEO stack



stack



+



stack

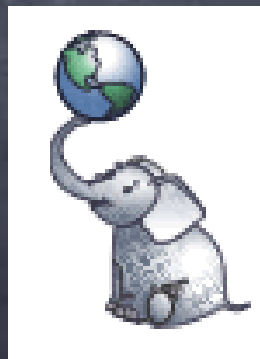




MAPSERVER



+



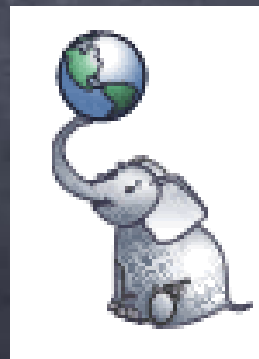
stack



~~MAPSERVER~~



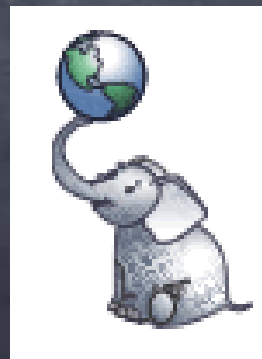
+



stack



MAPSERVER



stack



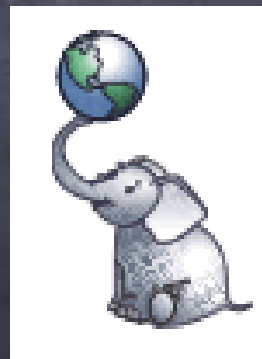
Geo-webservices  
& web-clients

e-ducation

Open Standards &  
interoperability



MAPSERVER



# well-understood design method





well-understood  
design method  
trustworthy  
reproducible

what else....?

research



tool for prototyping

research

tool for prototyping

research

subject of research

development



# development

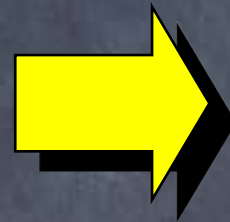
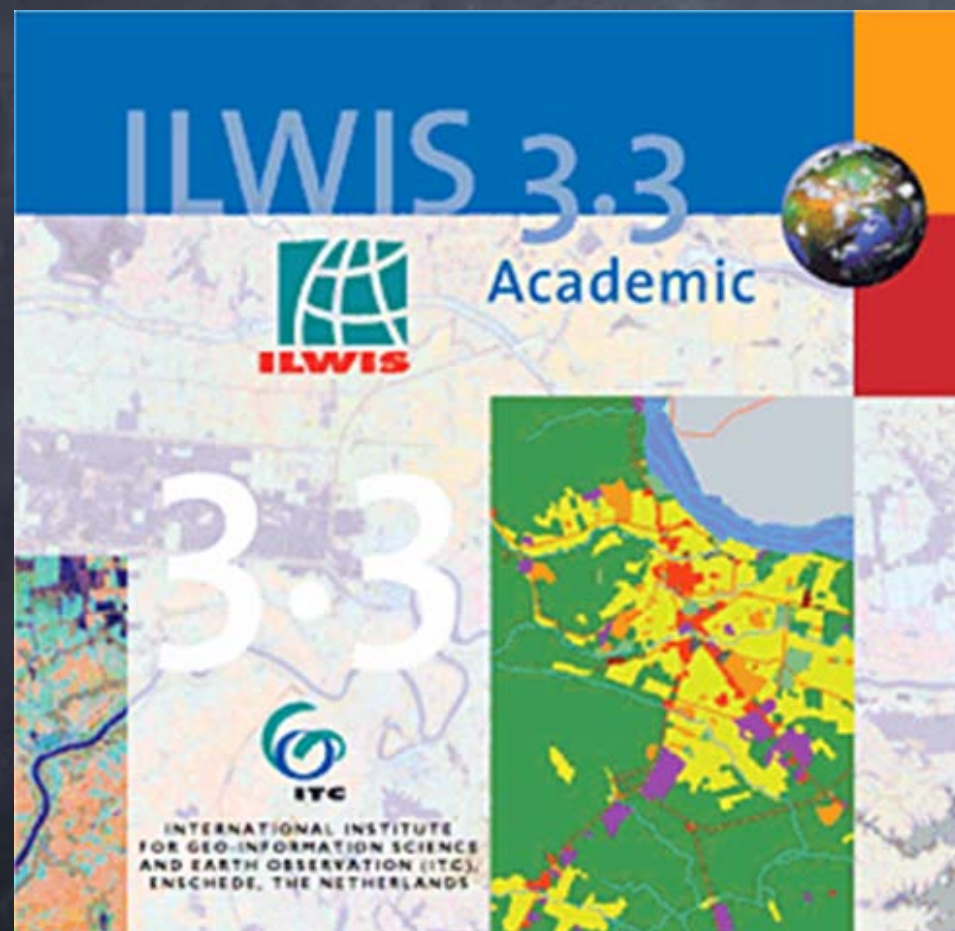
52° North communities





geoprocessing community  
(WPS)

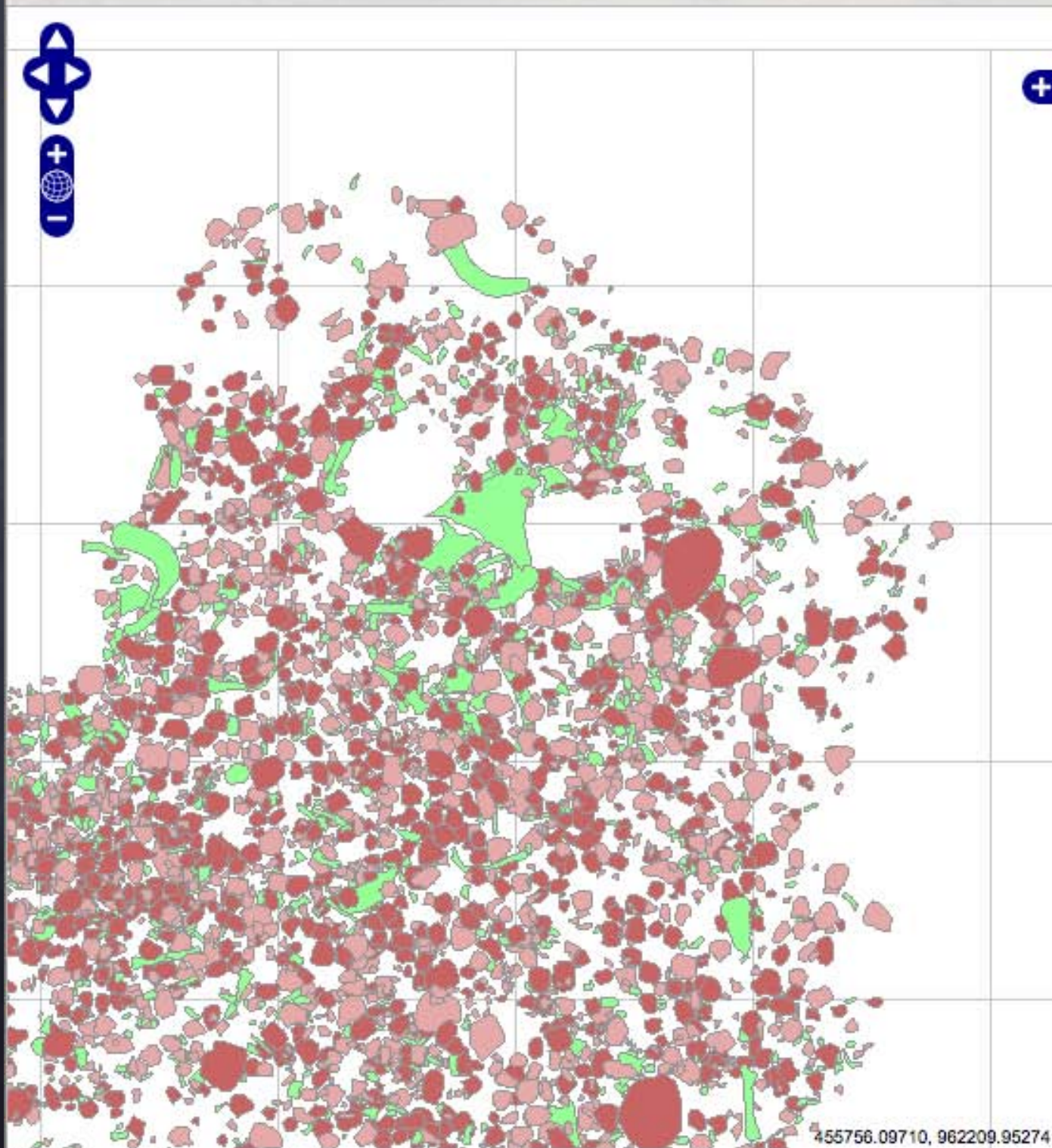
# ILWIS





projects





### Map and Element Data of excavation "Garba IVD"

Use the navigation icons or *drag* to pan map, *shift-drag* in map to zoom into an area of interest. Use the Layer Switcher (+) to select layers..

#### Archeological elements:

- Lithic industry
- Percussion material
- Faunal remains
- Liana
- Human remains
- Unmodified material

#### Other layers:

- excavation limits
- erosion limits
- large basalt blocks
- unmodified pebbles

Filter elements (filters are combined, select none to see all):

- |  |  |
|--|--|
| <input type="checkbox"/> Lithic industry     | <input type="checkbox"/> Human Remains       |
| <input type="checkbox"/> Percussion material | <input type="checkbox"/> Unmodified material |
| <input type="checkbox"/> Faunal Remains      | <input type="checkbox"/> Drawing available   |
| <input type="checkbox"/> Liana               | <input type="checkbox"/> Photo available     |

[Back to overview Map](#)

Click on Archeological Elements to see attribute data:

**Found:**  
 Number 10476 at site Garba IVD  
 (Category: Faunal remains)  
[Show attributes...](#)



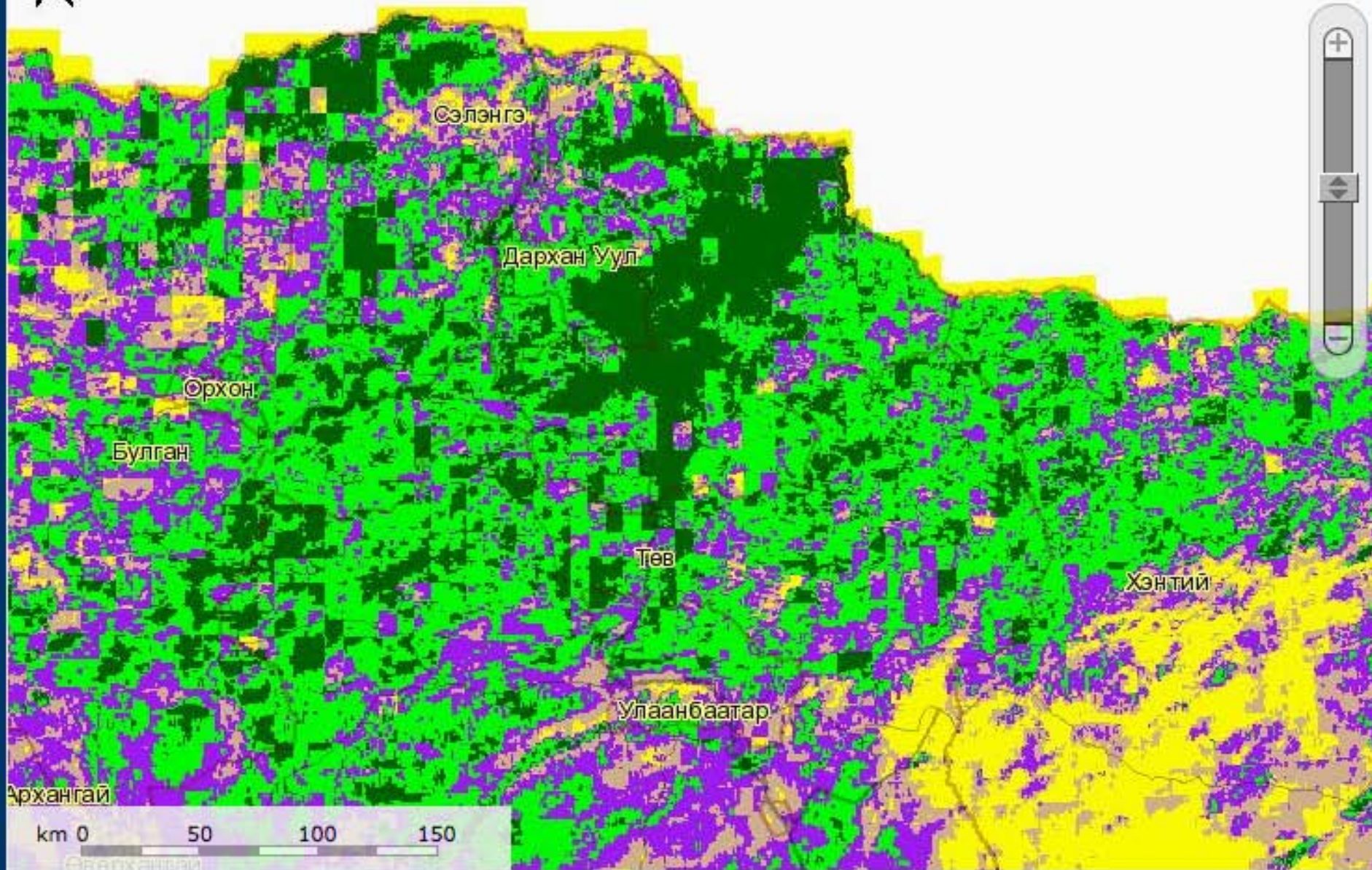


# Зудны мэдээлэл

Мэдээ оруулах | Монгол | Англи

Хэрэгсэл ▾

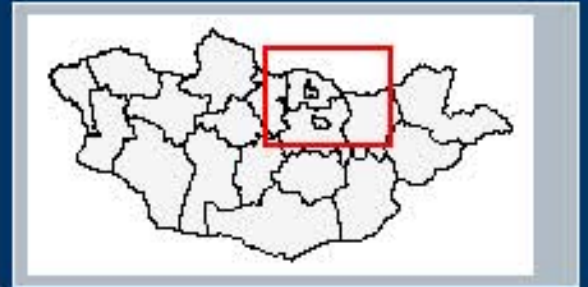
Масштаб 1: 2987940



km 0 50 100 150



- Зудны үнэлгээний бүтээгдэхүүн - Энэ сар**
- Цасны зураг 1 -р 10 хоног
- Цасны зураг 2 -р 10 хоног
- Цасны зураг 3 -р 10 хоног
- Температурын зураг /ХД/ 1 -р 10 хоног
- Температурын зураг /ХД/ 2 -р 10 хоног
- Температурын зураг /ХД/ 3 -р 10 хоног
- Бэлчээрийн даацын зураг /газрын мэдээгээр/ 1 -р 10 хоног
- Бэлчээрийн даацын зураг /газрын мэдээгээр/ 2 -р 10 хоног
- Зуншлагын зураг 8 -р сарын 1 -р 10 хоног
- Зуншлагын зураг 8 -р сарын 2 -р 10 хоног
- Ургамалжилтын зураг 8 -р сарын 1 -р 10 хоног
- Ургамалжилтын зураг 8 -р сарын 2 -р 10 хоног
- Биомассын зураг 1 -р 10 хоног
- Биомассын зураг 2 -р 10 хоног





# Questions?

[kobben@itc.nl](mailto:kobben@itc.nl)