

ALGORITHMIC ASPECTS IN ON-LINE TRIANGULATION

Armin W. Gruen
 Department of Geodetic Science and Surveying
 The Ohio State University
 USA
 Commission III, WG2, Invited Paper

ABSTRACT

This paper discusses some of the major components that influence the on-line triangulation procedure. Besides a brief investigation into the estimation model, estimation principle and method of data analysis main emphasis is put on the computational algorithm. Three sequential algorithms, the Kalman Covariance Update, the Triangular Factor Update with Gauss/Cholesky decompositions, and the Givens Transformations Update are particularly stressed. Some operational aspects are addressed too.

1. Introduction

Photogrammetric on-line triangulation is currently considered as a data acquisition and quasi real-time data processing procedure that allows the operator to control blunders and other model errors, and remove false or add new observations at an early stage of block processing. Such capability increases significantly the speed of execution and the reliability of results of the overall triangulation procedure. Especially if the measurements are performed on an analytical plotter a supporting on-line triangulation software package can turn out to be extremely beneficial.

The sequential nature of the measurement process lends itself nicely to the application of sequential computational techniques. Since the response times of an on-line triangulation system are critical performance parameters, algorithmic aspects of the computational procedure are isolated in this paper as key problems.

A brief historical account of the development of on-line triangulation techniques over the last 20 years is used in chapter 2 in order to extract the major areas of concern. Chapter 3 is intended to address the purpose and to establish the goals of on-line triangulation. The on-line procedure as it is understood currently is discussed within the wider frame of a network design and quality control unit. The main components of an on-line triangulation system are shown and some major problems are pinpointed.

In Chapter 4 some of these components, like estimation model, estimation principle, and method of data analysis are discussed more in detail. Blunder detection and systematic error compensation are emphasized as particularly important issues of the data analysis phase.

The computational algorithm, recognized as the core element in on-line triangulation, is addressed in chapter 5. Although the existence of a great variety of different sequential algorithms is acknowledged, only those which have recently been suggested for use in photogrammetry, the Kalman Covariance Update, the Triangular Factor Update based on Gauss/Cholesky decompositions, and the Givens Transformations Update are focused on. Some operational considerations related to these truly sequential algorithms are also briefly discussed.

2. Development of On-Line Triangulation

Traditionally the term "on-line data processing" refers generally in photogrammetry to computer assisted or computer controlled systems, thus going back to U.V. Helava's first publications on the principles of analytical plotters in the late 1950's. Consequently on-line data processing encompasses a great variety of data processing techniques, utilizing an ample assortment of different type of equipment, ranging from analytical plotters and computer assisted comparators to computer supported analog instruments. Aspects of on-line point positioning in individual stereo-pairs and associated mapping problems are not the concern of this paper. These topics are addressed in a large number of papers of Commissions II and IV, ISP Congress, Hamburg 1980; see also the fine overview of Dowman, 1977.

An early reference to triangulation with analytical plotters is found in Jaksic, 1963. Jaksic emphasizes the possibilities for analytical strip formation, a procedure similar to the familiar triangulation technique on analog plotters. The opportunity for an immediate final strip transformation to the ground control system is also stressed.

In a later article, Jaksic, 1967, describes the aerial triangulation as it is done at that time on the NRC ANAPLOT analytical plotter. He clearly suggests that "... procedures concerning the execution of aerial triangulation have to follow as closely as possible the analog methods ...". So does the ANAPLOT triangulation procedure, which is composed of relative orientation, scaling, and subsequent off-line strip - or blockadjustment. Data editing capabilities are not much developed yet. Interestingly, Jaksic foresees already future concepts by stating that "This (bundle) type of simultaneous solution will be used only for independent models with sufficient ground control. For aerial triangulation on the NRC Analytical Plotter in its present form, if extended beyond a few models, this solution is out of the

question since the computer capacities would be overtaxed by the requirements of such a program. As a matter of fact none of the existing analytical plotters can handle this type of process. Consequently a discussion of its practical applications will have to be postponed until analytical plotters are coupled to more powerful computers."

In Jaksic, 1974, special reference is made to "on-line triangulation". Jaksic already realizes some potential advantages of the on-line concept; he mentions particularly the checking of replicated measurements and of residual parallaxes in relative orientation. For these procedures he expects computing times from several seconds to a minute. Besides referring to the possibility of automatic ("analytic") positioning he emphasizes also the advantages of housekeeping routines, like the real-time checking of errors in point identification.

It was not until around 1976 that on-line triangulation was generally and internationally considered a valuable topic for research and development. A working group "Analytical On-Line Triangulation" (WG III/4) was established at the XIIIth ISP Congress, Helsinki, 1976. The following Symposium of Commission III, Moscow, 1978 showed with three papers a first timid discussion of on-line triangulation topics. Kratky's 1980b Invited Paper of WG III/4 indicates also the initial stage of on-line triangulation during the late 1970's. However, there is already a fixed idea as to what the blessings of on-line triangulation could be, but thorough scientific investigations into the technical details and problems are still missing. Although the situation has improved slightly during the period 1980-1984, one is currently still inclined to consider on-line triangulation and its crucial problem areas as a fairly open field, with no operational systems established and no standard procedures agreed upon yet. It seems that very rarely has an issue of such importance found such reluctant scientific attention and advocates. The sequel gives a brief account of the development of methods and systems over the last decade.

In retrospect it turns out that the early article of Mikhail, Helmering, 1973 on "Recursive Methods in Data Reduction" obviously determined the viewpoints of researchers involved in this issue for almost a decade. Mikhail, Helmering use a method which modifies the inverse of the normal equations in order to account for the addition or deletion of observational data as well as of model parameters. The authors also touch upon a very critical aspect of sequential estimation in linearized models, namely the problem of proper use and updating of approximate values. Furthermore, they give a formula for the Q_{VV} -matrix update. The suggested sequential algorithm is used for the relative orientation of a single stereopair.

Helmering, 1977, has refined the previous algorithm by considering the sparsity pattern of the matrices involved in the bundle solution of a stereopair.

Both articles refer to computer assisted comparators as data acquisition devices. It should be noted that the emphasis is on point positioning in small systems rather than on block triangulation (Helmering, 1977, p. 470: "For computer-assisted comparators, the analytical photogrammetric model need be capable only of processing data from a small number of photographs, usually no more than two or three."). The primary intention is to update sequentially the parameter (solution) vector (exterior orientation parameters, object point coordinates).

Dorrer, 1978, picks up this approach of updating the normal equation inverse and applies it conceptually to sequential strip triangulation with independent models. He formulates the estimation problem in terms of standard problem I (condition equations), thus treating also the parameters as random variables. He refers to this type of updating of the inverse as the "Kalman-form".

Kratky, 1979, reports on some principles of on-line solutions and describes the stage of on-line triangulation at the ANAPLOT. He favors on-line solutions within small blocksubsystems and subsequent simultaneous off-line block adjustment as opposed to the total on-line approach for the whole block. He feels that a strip triplet is of sufficient and appropriate size for a subsystem. ANAPLOT software is available for on-line model formation and scale transfer along strip direction. Data editing modules for point deletion, addition and replacement are operational. The algorithms used are not of sequential type.

A sequential algorithm for on-line bundle triangulation is suggested by Dowideit, 1980. The underlying estimation model has a fixed number of parameters. These parameters are all treated as random variables. The associated weight coefficient matrices are originally derived from very coarse approximate value computations at an initial stage of the sequential process. These matrices are sequentially updated using the Kalman-form approach, as image coordinate observations are becoming available. In an experiment Dowideit has simulated this on-line approach in an off-line computer program. Although the sequential estimation approach used here might draw some criticism as outlined in Chapter 4, it is for the first time that a subblock is used in a sequential model (6 photographs), rather than only two or three strip photographs.

In a follow-up paper to his 1979 article, Kratky, 1980a, describes stage and potential of aerial triangulation on the ANAPLOT. The on-line bridging mode is now refined by using a stricter scaling procedure. Kratky explains in much detail some beneficial operational features of analytical plotter triangulation as there are:

- savings of pass points if the subsequent plotting is done on analytical plotters
- computer selection and positioning of tie points in strip direction; automatic numbering
- computer positioning and measurement of tie points across strip direction
- treatment of pass points if required for subsequent analog plotting.

Although Kratky is very much in favor of across-strip measurements, he does not support across-strip on-line computations. His train of thought suggests, however, that he is only considering 20% sidalap blocks.

In a review paper, Kratky, 1980b, reports on the present status of on-line triangulation. He pays particular attention to the methodology of on-line solutions. Two different aspects are isolated here, the solution algorithm, and the blunder detection procedure. It is acknowledged that if the size of the normal equations exceeds a certain limit, the dynamic character of the observational scheme must find its counter balance in a recursive adjustment, in order to provide for tolerable response times. Again, the Kalman-form of normal equations inverse and parameter vector updating is considered appropriate. The data-snooping technique is suggested for blunder detection. Hence for the first time three critical elements for a successful execution of modern on-line triangulation are addressed:

- the recursive nature of near real-time computations
- the use of computational units which clearly exceed two photographs
- the need for a sophisticated blunder detection technique.

Roscullet, 1980 also recommends the normal equation inverse updating approach for recursive adjustment in form of a variable size parameter vector. Furthermore, he suggests to treat the whole block in a sequential mode, and to include even surveying observables.

The year 1980 and the Hamburg Congress mark an end to a period of early developments and concepts in on-line triangulation. Although the basic advantages of the on-line approach with respect to a more efficient triangulation procedure are acknowledged, one is not ready yet for a fully analytically oriented methodology in data acquisition and processing. The measurement process follows essentially the analog instrument pattern, and also the computational strategy still models the analog procedure.

A number of papers have been published in recent years which accentuate a more analytically oriented approach to on-line triangulation. Some authors clearly stress that the recursive treatment of the data should not be confined to two or three photographs at most. The use of larger block-subsystems or even the total on-line concept for the whole block are envisioned and related sequential algorithms formulated.

Heindl, 1981, suggests that data editing (he considers only deletion of observations and object points) be done in form of a sequential least squares adjustment, whereby the prereduced normal equations can be directly updated. Interestingly he recommends his approach for data editing (blunder detection) in off-line blockadjustment. Heindl's functional model includes also additional parameters for systematic error modeling.

For the sequential processing of blocks Molenaar, 1981c, suggests splitting up the computing process into two major steps: strip formation via relative orientation and triplet formation, plus subsequent connection of the strip to ground control. Thus Molenaar's computing process still follows the analog pattern. For both adjustments the estimation model is formulated in terms of standard problem 1 (condition equations). Testing procedures for blunder detection are recommended, and the problem of systematic error compensation is discussed.

Blais, 1983 suggested Givens transformations for linear least squares computations in general and for sequential estimation in particular. Although his publication does not indicate any quantitative performance measures it seems that Givens transformations can be a strong candidate for an efficient sequential estimation algorithm in on-line triangulation.

Another sequential computational approach was recommended by Gruen, 1982. His "Triangular Factor Update", based on Gauss- or Cholesky-factorization, updates directly the prereduced or, in many cases, even the further reduced matrix of the normal equations. In Wyatt, 1982 and Gruen, Wyatt, 1983, the method was thoroughly compared with the Kalman-form of inverse updating, using computational speed and storage requirements as performance criteria.

In Kratky, 1982 and Kratky, El-Hakim, 1983 the latest stage of development of the NRC-ANAPLOT on-line triangulation features are reported. Computer positioning across strip is now operational, and data-snooping is used in relative orientation and scale transfer along the strip.

There is a variety of other publications which the author had access to and which are worth mentioning here. These works are not referenced in more detail because they are either not fully dedicated to on-line triangulation, or cover just some detail or side aspect, like Kratky, 1976, Salmenperae, Vehkaperae, 1976, Foerstner, 1979, Hobbie, 1978, Dorrer, 1981, Seymour, 1982, Hoehle et al., 1982, Radwan et al., 1982.

As it turns out, the most recent developments are increasingly using a rather strict estimation model, based on the bundle solution, and are very much concerned with the design of a fast sequential algorithm.

An account and evaluation of recent achievements must be preceded by a definition of the term "on-line triangulation", in order to come to an understanding as to what this technique is supposed to accomplish. The following chapter is intended to define the goals of on-line triangulation systems.

3. Definition and Goals of On-Line Triangulation

In general terms, "on-line triangulation" is the procedure of measuring and immediately processing data for point positioning purposes. By defining "on-line" as "being in direct communication with a computer" the triangulation procedure draws advantage from the fact that the measurements can be processed immediately after being acquired. The related benefits are expressed in Resolution T III/3 of the XIVth Congress of the ISPRS, Hamburg 1980, where the Congress "... recognizes, that the on-line capability to measure and immediately process data increases the speed and reliability of photogrammetric triangulation and may significantly improve the organization of routinely performed work" An increase of speed and reliability of the overall triangulation procedure can primarily be achieved through the opportunity of quality control at the early stage of data acquisition. Besides the near real-time control of the measurements and their agreement with the selected estimation model the measurement process as such might be controlled, especially if the system provides for computer feedback in the closed-loop sense (analytical plotter). These latter, more practical aspects, like the problem of analytical tie point transfer, will be covered in another invited paper of WG III/2.

Molenaar, 1981b has identified some problem areas in the field of quality control. He particularly refers to blunder detection, systematic deformations, unified testing procedures, analysis of the stochastic model, connection of photogrammetric data to ground control, variance component estimation, and accuracy measures in practice. If an on-line triangulation module has to act as a quality controller it should be capable of responding to all those critical questions. However, besides operating as a passive quality control unit, a very advanced version of an on-line triangulation procedure might even perform the functions of an active network design module of first, second, and third order type. Such a module could advise the operator or the automatic correlator where to place points and observations in order to achieve a prespecified precision/accuracy structure in the object space. Clearly, such a system is far from being realized today. But we have to acknowledge the fact that the hardware is available, and, to a certain extent, the methods are developed which would allow us to design, install, and operate such a system.

Since we have to deal in on-line triangulation with redundant observations our problem at hand is that of optimal estimation. This involves the problems of proper model set-up, estimation approach, and assessment of results. Although the model might be drawn up differently, as long as those different versions are formulated at the same level of rigour, and if the same estimation approach is used (e.g., unbiased, minimum variance) we may expect identical results. The model formulation, however, influences significantly the computational algorithm. Since primary evaluation criteria for an algorithm are computational speed (response time) and storage requirements, it clearly matters, for instance, which standard problem of least squares adjustment is used.

Furthermore, the algorithm depends on the type of results required. The task of point estimation delivers the parameter vector x and the residual vector v , interval estimation requires the associate weight coefficient matrices Q_{xx} , Q_{vv} , together with an estimate of the variance factor σ_0 . The algorithm might be also influenced by the method of data-acquisition, e.g. whether groups of observations or single observations are added, and whether the size of the parameter vector is kept constant or varies. Also influential are data editing procedure (addition, deletion, replacement of observations) and method of data analysis (numerical, graphical, combinations; operator controlled, automatic; level of statistical strength).

Figure 1 depicts the major components of an on-line triangulation system. The evaluation of such a system should consider the following parameters:

- computer characteristics (computing speed, random access memory, I/O times)
- admissible response time
- block size to be used in near real-time mode (numbers of photographs and object points)
- data acquisition mode
- type and number of required results

- method of assessment of results
- data editing procedure
- estimation model
- estimation approach
- computational algorithm

The key to a successful on-line triangulation technique is the optimal adjustment of these parameters. Notwithstanding the previously formulated high demands on a future on-line triangulation system, it is currently generally agreed that the major task of on-line triangulation is the early check and correction of observations (Kratky, 1980b). This aspect of quality control involves the check of the agreement of the acquired observations with a suitable estimation model. Any distortion between observations and adopted model must entail either a reacquisition or redefinition of the observations (remeasurement, renumbering, etc.), or an alteration of the estimation model.

There are three basic types of errors which influence our estimation model: blunders, systematic errors, stochastic errors. All of them have to be addressed and checked in an on-line triangulation procedure. This requires a methodological edifice for the evaluation of the estimation model. Baarda's accuracy and reliability theory (Baarda, 1967) provides a fine and thoroughly developed concept to be used here.

Since on-line triangulation is considered a highly interactive process with information flowing back and forth among operator, computer, measurement device, near real-time responses of the system to an operator request are very crucial. Hence the time factor becomes a very important element and any computational methods for estimation and assessment of results must stand a critical time performance evaluation.

So it appears that in on-line triangulation we are not only faced with all the problems of off-line triangulation, but that we have to solve them under much more severe computing time constraints. It turns out that the response time is the primary parameter in on-line triangulation. The functional and stochastic parts of estimation models and the associated computational algorithms have to be tailored such that they meet this time requirement. The great variety of computers with widely different performance characteristics in terms of computing speed and available random access storage makes a unique classification and evaluation of on-line techniques very difficult.

The next chapter investigates some of the most critical parameters, that determine the quality of an on-line triangulation system.

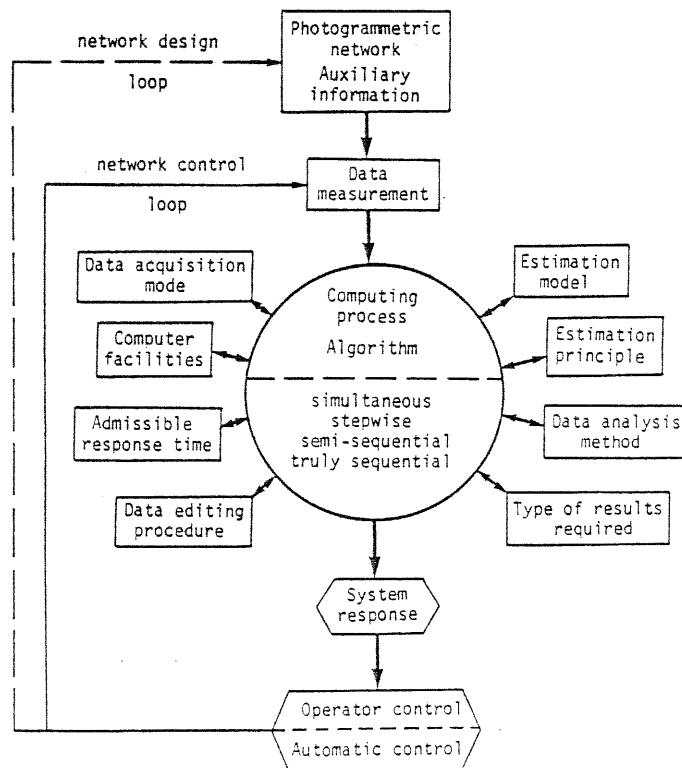


Figure 1: Components of on-line triangulation systems

4. Evaluation of Some On-Line Triangulation Components

Figure 1 pictures the parameters which determine the design of an on-line triangulation procedure. Some of those components, which cover more practical aspects, like admissible response time, computer facilities, data acquisition mode, data editing procedure, are not further addressed in this paper. Closer attention is paid to the estimation model and principle, and the method for data analysis. The core of on-line triangulation, the computational algorithm, is addressed in chapter 5.

4.1. Estimation Model and Estimation Principle

Problems associated with the proper choice and evaluation of an estimation model have been increasingly discussed in the geodetic literature in recent years, e.g. Koch, 1980, Schaffrin, 1983. In the following reference is made only to those concepts which have been used in photogrammetric on-line triangulation so far.

a) Standard Approach

The Gauss-Markov model is the estimation model most widely used in photogrammetric linear or linearized estimation problems.

An observation vector ℓ of dimension $n \times 1$ is functionally related to a $u \times 1$ parameter vector x via

$$\ell - e = Ax \quad (1)$$

The design matrix A is a $n \times u$ -matrix with $n \geq u$ and the rank $\text{Rank}(A) = u$. There is no need to work with rank-deficient design matrices in on-line triangulation. Rank deficient systems, caused by missing observations, generally do not allow for a comprehensive model check. Observations should be accumulated until the system is regular and can be solved using standard techniques. For rank deficiency caused by incomplete datum, see chapter 5.2. Sequential least squares estimation with pseudoinverses is very costly (compare Boullion, Odell, 1971, p. 50 ff).

The vector e represents the true errors. With the expectation $E(e) = 0$ and the dispersion operator D we get

$$E(\ell) = Ax \quad (2a)$$

$$D(\ell) = C_{\ell\ell} = \sigma_0^2 P^{-1} \quad (2b)$$

$$D(e) = C_{ee} = C_{\ell\ell} \quad (2c)$$

The estimation of x and σ_0 is usually attempted as unbiased, minimum variance estimation, performed via least squares, and results in

$$\text{parameter vector } \hat{x} = -(A^T P A)^{-1} A^T P \ell \quad (3a)$$

$$\text{residual vector } v = Ax - \ell \quad (3b)$$

$$\text{variance factor } \hat{\sigma}_0^2 = \frac{v^T P v}{r}, \quad r = n - u \quad (3c)$$

The architecture of A is determined by the type of triangulation method used. Although some authors still favour approximate methods for on-line triangulation there is strong indication that the bundle method is becoming a standard technique for systems which generate data in the form of image coordinates (Salmenperae, Vehkaperae, 1976, Helmering, 1977, Dowideit, 1980, Rosculet, 1980, Dorrer, 1981, Heindl, 1981, Molenaar, 1981c, Gruen, 1982).

For bundle adjustment the system (1) can be specified as

$$-e = A_1 x + A_2 t - \ell; P \quad (4a)$$

x ... vector of object point coordinates

t ... vector of orientation elements

A_1, A_2 ... associated design matrices

e, ℓ, P ... true error vector, constant vector, weight matrix for image point observations

x, t are considered here as unconstrained (free) parameters. If observations are available for some or all of the object point coordinates a second system of observation equations is added according to

$$-e_c = Ix - \ell_c; P_c \quad (4b)$$

Observations for the orientation elements would add

$$-e_t = It - \ell_t; P_t \quad (4c)$$

The combined system (4a, 4b, 4c) was formally used by Dowideit, 1980. It should be noted, however, that Dowideit had no real observations for x and t available. Although system (4a) would have been the proper description for the type of information at hand, he used instead system (4a, 4b, 4c) in order to be able to operate within a constant size state vector system for sequential estimation. Covariance matrices were assigned to x and t , generated through the process of approximate value computation for bundle adjustment. Such a procedure can pose severe convergency problems.

For high accuracy data processing additional parameters for systematic error modeling should become an indispensable part of the estimation model. The inclusion of an additional parameter vector z in (4a) results in

$$-e = A_1 x + A_2 t + A_3 z - \ell; P \quad (5a)$$

If the additional parameters can be considered observed quantities one would have to add

$$-e_z = Iz - l_z; P_z \quad (5b)$$

The least squares principle in system (5a, 5b, 4b, 4c) would now lead to the combined minimum

$$v^T P_v v + v_c^T P_c v_c + v_t^T P_t v_t + v_z^T P_z v_z \rightarrow \text{Min.} \quad (6)$$

Since system (5a, 5b, 4b, 4c) is still a Gauss-Markov model, we refer in the sequel to system (4a) for simplification and without loss of generality.

b) Variations

Using Tienstra's terminology, the previous model (1) is referred to as "standard problem II" (least squares adjustment with observation equations). Molenaar, 1981c has shown that the bundle adjustment (model (4a)) can be also formulated as "standard problem I" (least squares adjustment with condition equations). Since the conditions are based on strictly perspective relations, any disturbance therefrom, like systematic errors, cannot be formulated within the functional portion of this model. There is the possibility to consider systematic errors in the stochastic model, which requires, however, a definite knowledge of the systematic deformation pattern prior to the execution of the triangulation, if expensive weight estimation is avoided.

Mixed forms of these standard problems (nos. III and IV) are also in use. They can always be reduced to either standard problem I or II. If the rotation elements ϕ , ω , κ are not measured Molenaar's original set-up of equations for relative orientation and triplet formation is actually given in terms of standard problem IV. He reduces the set to standard problem I, before entering the final solution. This procedure is virtually designed from the very beginning as a sequential approach, so it does not require a specific sequential computational algorithm. The procedure is presented as a "one-way" technique, building up models and strips, and transforming the strips to ground control. There is no reference as to how this procedure should be used optimally if observations and parameters have to be deleted/added at a stage prior to the latest stage of measurement and block generation.

Dorrer, 1978 formulates the strip triangulation in terms of standard problem I, considering both the real observations and the usual parameters as stochastic variables. He demonstrates his approach with strip triangulation of independent models, and operates with transfer and control conditions. The sequential updating procedure applies the Kalman-form of covariance updating.

The unbiased, minimum variance estimation approach via least squares leading to results (3a), (3b), (3c) is by far the most popular estimation principle in photogrammetry. It is a widely familiar and thoroughly investigated approach, simple and inexpensive. A current general trend in statistics uses a slightly biased parameter vector, which is, however, expected to be with higher probability closer to the true value than its unbiased counterpart. Reported disadvantages of the least squares technique with respect to the detection of model errors, in particular blunders, support this trend. Robust estimation (Andrews, 1974, Huber, 1981), ridge regression (Hoerl, Kennard, 1982), James-Stein estimation (Draper, v. Nostrand, 1979), etc. are some of the more recent techniques. The Danish method (Kubik, 1982), and the Median method (Fuchs, 1981, Fuchs, Leberl, 1982) fit right into the category "robust estimation". The Danish method, which can be interpreted as an iterative reweighted least squares estimation, has found some advocates in photogrammetry (El-Hakim, 1982, Larsson, 1982, Sarjakoski, 1982). Besides the works of El-Hakim, 1982, Kilpelae et al, 1982, comparative studies with ordinary least squares estimation are not available to the author yet.

Although some benefits with respect to blunder detection are expected from robust estimation, those expectations could not be quantified to date in photogrammetry. Of crucial importance for proper functioning of this method is the weighting scheme, and in particular the choice of the starting values. As summarized in Hocking, 1983, a great variety of weighting schemes is available, which generates the danger of arbitrary action. Starting from least squares residuals is not recommended, because those reflect already strongly the masking and swamping effect of blunders. Robust estimators should be used with great care only, and by knowledgeable personnel. A black box approach is not advisable. This aspect does not qualify robust estimation for on-line triangulation, which is supposed to be a highly automated technique, controlled by photogrammetric operators. The intrinsic iterative scheme of robust estimation and the associated computational load questions even further its suitability.

4.2. Methods of Data Analysis

The overall on-line triangulation concept, especially its computational approach, is very much determined by the method of data analysis. The on-line triangulation technique suggested in Gruen, 1982, for instance, is primarily based on the particular internal reliability structures of photogrammetric networks, and the related conditions for blunder detection with Baarda's data-snooping or modified techniques (Gruen, 1980, 1981).

As it was emphasized in chapter 3 the major short range goal of current on-line triangulation efforts is the detection of model errors at an early stage. This allows for inexpensive re-measurements and provides a fairly clean data set for the final execution of the simultaneous block adjustment. This latter aspect is of course not applicable to systems which treat the whole block in a sequential mode and submit the final solution vector right after the final measurements are completed, e.g. Molenaar, 1981c, Dowideit, 1982, Blais, 1983.

Conventionally model errors are classified into blunders, systematic errors, and stochastic errors. This classification scheme tends to be abandoned in recent years. Stochastic errors are sometimes treated intentionally as systematic errors and vice versa, and no distinction is made any more between blunders and systematic errors, because both cause a deficiency in the functional part of the estimation model. In this paper the author uses the conventional classification, because there is not much experience available yet with respect to the joint treatment of different types of errors. In addition, those different errors do have a distinctively different genesis, although their effect might be similar, and since in on-line triangulation one is closer to the original source of errors and is better capable of correcting errors rather than compensating them or removing the related observations, the conventional classification seems to fit better to the on-line triangulation situation.

The stochastic errors in image coordinates have not found too much attention yet in photogrammetry (Schroth, 1982 and related references). It seems that the usual assumption of equally weighted, uncorrelated image coordinates needs only to be abandoned in case of extremely high model refinement requirements.

4.2.1 Blunder Detection and Location

Much has been written in recent years about blunders and their detection in the statistical and geodetic literature. Photogrammetrists in particular have always longed for efficient blunder detection techniques. The knowledge and the solutions gained in off-line triangulation need to be transferred now to on-line systems.

An excellent review paper on blunder detection was recently published by Beckman, Cook, 1983. Two basic standard methods for the treatment of blunders have evolved over the years: identification and accommodation. Following the notions of Barnett, Lewis, 1978, identification of a blunder may lead to a) its rejection, b) important new information contained in concomitant variables that would otherwise have gone unnoticed, c) its incorporation through a revision of the model or method of estimation, d) a recognition of an inherent weakness in the data and thus further experimentation. Accommodation of blunders is achieved through suitable modifications of model, and/or estimation procedure, and/or method of analysis. Robust methods are regarded as omnibus methods for accommodation.

Identification and accommodation can be related to two different notions of a blunder, the "mean shift model" and the "variance inflation model" respectively. In the mean shift model, the marginal normal distribution of a blunder is considered to be $n(\mu + \lambda, \sigma^2)$, as compared to the distribution $n(\mu, \sigma^2)$ of all other errors. The variance inflation model considers the blunder to follow the normal distribution $n(\mu, a^2\sigma^2)$, $a^2 > 1$, while all other errors follow again the normal law $n(\mu, \sigma^2)$. Thus the mean shift model interprets a blunder as an error in the functional model for estimation, whereas the variance inflation model refers to a blunder as a stochastic error in the estimation model. Identification and accommodation coincide with the two most popular approaches for blunder treatment in photogrammetry, Baarda's data-snooping and the Danish method. Identification is generally judged to be more fundamental, avoiding the obscurrence of essential information, which is a basic drawback of accommodation. As explained earlier in chapter 4.1., identification is preferable to accommodation in on-line triangulation, for computational as well as for cognitive reasons.

Problems of masking, swamping and multiple outlier tests are also addressed in Beckman, Cook, 1983. It is obvious that photogrammetrists still have a fairly long way to go in their efforts to test and compare other approaches to blunder detection than those that are already in use.

Graphical methods for instance could turn out to be very potent, particularly in multiple blunder situations, and lend themselves favorably to on-line triangulation, if a graphical screen is available as part of the system.

Baarda's data-snooping has been suggested for on-line triangulation in Foerstner, 1979, Kratky, 1980b, Molenaar, 1981c, Dowideit, 1982, Gruen, 1982. The method requires only the diagonal elements of the Q_{VV} -matrix, is thus computationally manageable, considering the sparsity of the matrices involved, and has proved its potential for the one-blunder case in many applications, e.g. Gruen, 1978c. A remarkable computational speed-up of this technique can be achieved with the method of "unit observation vector", described in Gruen, 1982, if only a few observations have to be tested at a time, and only the related diagonal elements of the Q_{VV} -matrix are required. This is likely to be the case in on-line triangulation, where observations acquired

at earlier stages of the sequential process have already been finally accepted.

Even multiple-blunder situations can be satisfactorily dealt with by the use of the data-snooping technique, if the Q_{VV} -matrix is structured such that no significant masking and swamping occurs.

Masking and swamping were tried to be retort by applying multi-dimensionally derived test criteria (Stefanovic, 1980). Tests conducted with this approach by Elious, 1983 were not as successful as expected. Since these test criteria include inverses of submatrices of Q_{VV} the problem of singularity of those submatrices has to be dealt with. Altogether, this method requires a tremendous organizational and computational overhead, which devalues it for application in on-line triangulation. Other modifications and variations of Baarda's original data-snooping are reported in Pope, 1976, Clerici, Harris, 1980, Gruen, 1980, Molenaar, 1981a, Benciolini, et al., 1982, El-Hakim, 1982. Initial tests in close-range networks with a procedure that is designed to recover masking and swamping effects in a recursive mode are reported in Madani, 1984. This method has some interesting features for on-line triangulation, it is computationally attractive and displays decent blunder location properties. It needs further refinement and more practical testing before it can be recommended as operational, though. A thorough, effective and fast specific blunder location procedure for on-line triangulation has yet to be developed.

4.2.2. Systematic Error Compensation

Like blunders, systematic errors can be interpreted as deficiency of the functional portion of the estimation model. Unlike blunders, which can only be detected within the Gauss-Markov model (1) from post adjustment data (residuals or functions of them), systematic errors can effectively be modeled in the estimation model prior to the adjustment. The a priori available knowledge about both error types leads to the basic difference in their treatment. While there is no a priori knowledge about blunders, neither about their location nor about their size, we have a fairly well understood and documented knowledge about possible systematic errors that are likely to occur in the data. This allows us to model those anticipated systematic errors as additional parameters in the estimation model. This procedure is known as "self-calibration". Only the type of error needs to be anticipated, not its size. Self-calibration has proved its potential in off-line triangulation. If on-line triangulation is performed on a high accuracy level, self-calibration is also indispensable. Self-calibration is particularly crucial if "small" blunders (up to two times the size of the just detectable blunder) are chased. Systematic errors would otherwise interfere inadmissibly with the blunder detection procedure. This would cause observations which contain just systematic errors to be tagged as grossly erroneous, and true blunders could be masked. Heindl, 1981 included additional parameters in his system, Gruen, 1982 has recommended their use. Molenaar's 1981c approach does not allow the use of additional parameters in the functional, but in the stochastic model.

A widely accepted strategic approach in the treatment of additional parameters in off-line triangulation is to include a fairly large set in order to be sure to cover all possible errors. Since this creates the danger of overparameterization, a procedure for the deletion of non-determinable additional parameters must be incorporated. The major information regarding the detectability comes from sources like number and location of control points, overlap and flight direction arrangement.

In on-line triangulation the control points are sometimes not considered at all (Gruen, 1982), or systems are built up along a strip (Dorrer, 1978, Molenaar, 1981c, etc.) and generally the process starts with small units, e.g. one stereomodel. These conditions do not favor a solid determination of a comprehensive set of additional parameters. In order to avoid running into too many non-determinable additional parameters and spending too much time with the clearance procedure one should better operate in on-line triangulation with a fairly small set of additional parameters, considering only the most important ones, which are known to be determinable in those relevant arrangements. This restriction is not critical because non-determinable systematic errors do not have an effect on the residuals of the adjustment (Gruen, 1978b) and do not interfere with blunders. A computationally fast and reliable procedure for the handling of additional parameters (checking on determinability and possibly significance) has still to be adopted for on-line triangulation (see related off-line approaches in Gruen, 1978a, 1983a, Ackermann, 1980, Foerstner, 1981, Jacobsen, 1982).

The dynamic estimation of additional parameters in on-line triangulation allows to monitor a possible change of the systematic error pattern throughout the block and provides for valuable information regarding the use of non-blockinvariant additional parameters in the final off-line adjustment.

5. Algorithmic Aspects

An algorithm is defined as a sequence of computational instructions to solve a certain problem. In on-line triangulation this term can be applied to both the organization of the overall computational procedure and the specific approach selected for the computation of variables (solution vector, residuals, etc.). We assign the term "computing process" to the former while "algorithm" is used for the latter procedure.

As Figure 1 indicates, the computing process is the most critical element in on-line triangulation. It determines the response times, and its performance makes a procedure operational or causes its failure in practical application. There is a great variety of computing processes and algorithms available to solve problems (1) or (5a), (5b), (4b), (4c) either strictly or approximately. The fundamental choice to be made in on-line triangulation is between sequential and simultaneous processes, but, as Figure 2 indicates, there are also mixtures in use.

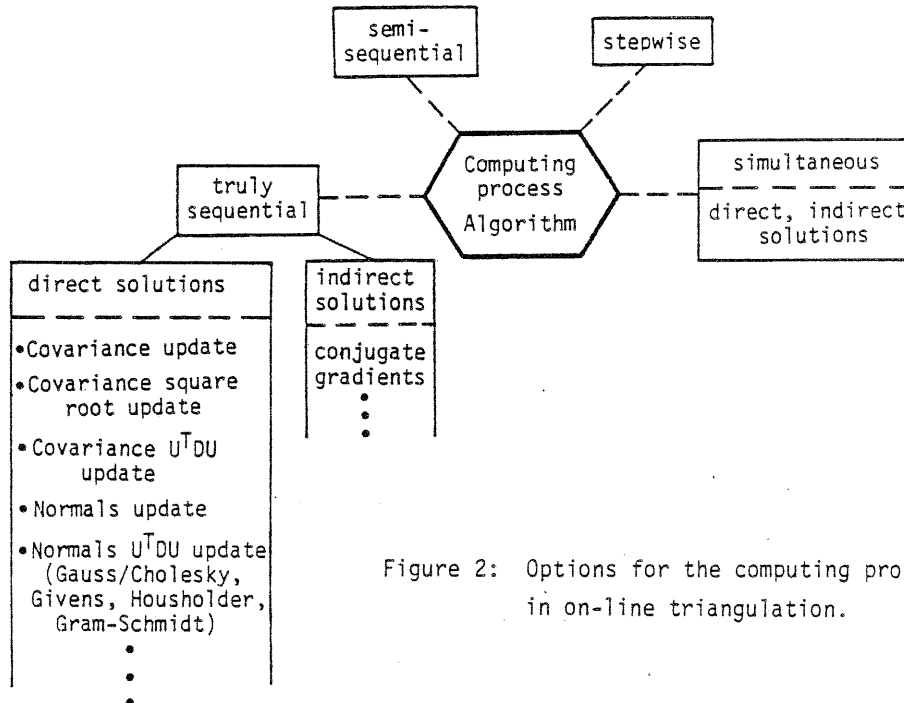


Figure 2: Options for the computing process in on-line triangulation.

Figure 3 shows the flow of the computations and the type of interference in non-simultaneous processes. The situation is best explained with the example of strip treatment. Assume that the appropriate simultaneous solution for strip triangulation is the off-line bundle adjustment. Stepwise procedures are followed in Salmenperae, Vehkaperae, 1976, Foerstner, 1979, Hobbie, 1978, Seymour, 1982, where the strip is formed by sequentially adding photos, models and/or triplets. Editing of data (deletion, addition, replacement) is only possible at the latest stage. The final solution is not strictly equivalent to a simultaneous bundle solution, but the differences may not matter for practical purposes.

A semi-sequential procedure would allow us to extend the data-editing back to earlier stages, but would consider changes in the solution vector and dependent variables only between the point of interference and the latest stage (Kratky, 1982). With some reorganization of the computing process all previously mentioned stepwise approaches could possibly be used in a semi-sequential version.

The truly sequential process allows for interference at any location, and considers all subsequent alterations in the solution vector, etc., no matter how small they are, so that the final results correspond exactly with the simultaneous bundle solution. The procedures of Mikhail, Helmering, 1973, Helmering, 1977, Rosculet, 1980, Heindl, 1981, Dowideit, 1982, Gruen, 1982, Blais, 1983 fit conceptually into that category. Molenaar's 1981c procedure is somehow a mixture between a stepwise and a truly sequential computing process. His adding of observations at the latest stage is organized as a stepwise technique, while the editing of observations that were earlier incorporated follows a truly sequential concept. Dependent on the blocksize, this latter approach can be very costly.

Truly sequential solutions have the greatest potential for future on-line triangulation applications. They give strict solutions, which is of importance for the detection and location of small blunders, while possibly providing for manageable computing times.

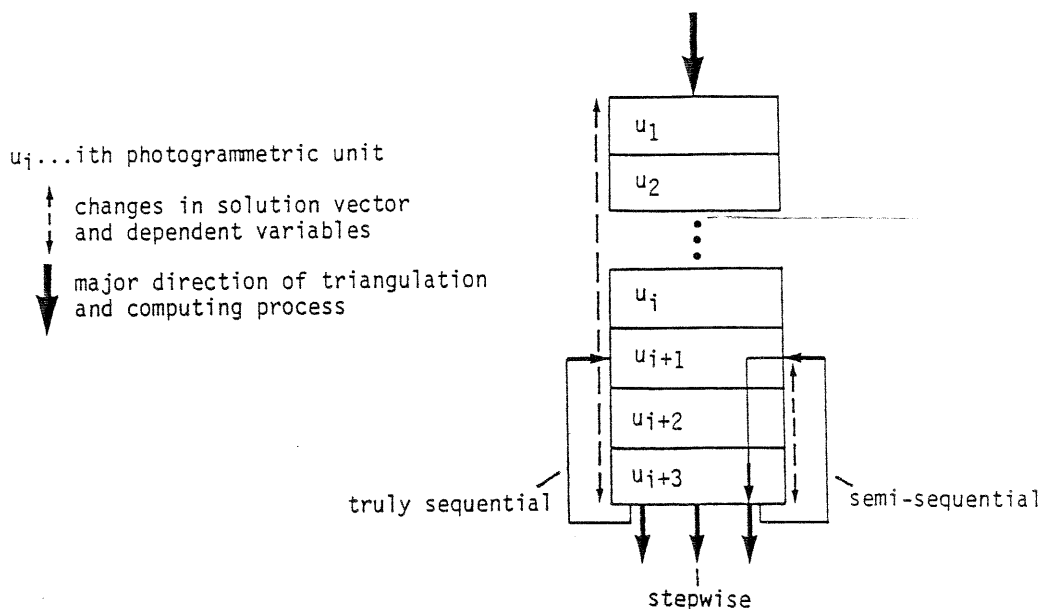


Figure 3: Flow chart for non-simultaneous computing processes.

5.1. Truly Sequential Algorithms

As indicated by Figure 2 we distinguish here direct and indirect solutions. Indirect solutions, like the conjugate gradient method, are easy to mechanize for simultaneous applications, but because convergence problems and unfavorable computing times have been reported in some places, those indirect methods have never found very much support among photogrammetrists. For sequential estimation purposes, however, the use of indirect methods should be reevaluated.

This paper will focus on direct methods, particularly on those which have been already suggested for on-line triangulation. Bierman, 1977 gives an account of direct sequential estimation algorithms, that have emerged over the past two decades, and that have been used primarily for orbit determination. He emphasizes particularly the Kalman Covariance Update, including its square root covariance factorization and its $U^T D U$ -covariance factorization modifications, the Housholder Update, and the SRIF (square root information filter) algorithm. Our discussions will center around Kalman Update, Givens Update, and TFU Update.

Basically a sequential update can be formulated at any stage of the least squares computing process, at the normals, the partially or fully decomposed normals, or at the inverse. The following list gives a short explanation of the currently most popular direct sequential algorithms:

- Kalman Covariance Update; updates covariance matrix of solution vector
- Square Root Covariance Update; updates square root factor of covariance matrix, used in order to improve the stability of the Kalman Update, e.g. Potter's algorithm (Bierman, 1977)
- $U^T D U$ Covariance Update; updates unit upper triangle U of covariance matrix factors; special case: Cholesky decomposition ($C^T C$ -covariance update)
- SRIF (square root information filter); updates the upper triangular factor of the decomposed normal equations; can be based on orthogonal decompositions (Housholder, Givens, Gram-Schmidt) or on Gauss/Cholesky factorization.

Three sequential algorithms have been suggested so far for use in photogrammetric triangulation:

- Kalman Covariance Update
- Triangular Factor Update (TFU) of the factorized normals with Gauss/Cholesky
- Givens Update of the factorized normals

For a more detailed description of these algorithms we refer in the sequel to model (4a) which was written as

$$-e = A_1 x + A_2 t - l \quad ; \quad P \quad (4a)$$

The resulting normal equations, which are further assumed to be regular, are of the form

$$N \begin{bmatrix} \hat{x} \\ \hat{t} \end{bmatrix} = \begin{bmatrix} N_{xx} & N_{xt} \\ N_{xt}^T & N_{tt} \end{bmatrix} \begin{bmatrix} \hat{x} \\ \hat{t} \end{bmatrix} = \begin{bmatrix} l_x \\ l_t \end{bmatrix}, \quad (7)$$

with

$$\begin{aligned} N_{xx} &= A_1^T P A_1, & l_x &= A_1^T P l \\ N_{xt} &= A_1^T P A_2, & l_t &= A_2^T P l \\ N_{tt} &= A_2^T P A_2 \end{aligned}$$

In an off-line environment the equations (7) are usually solved by applying Gauss or Cholesky factorization. The former can formally be described as a LU-factorization, decomposing N into a product of lower and upper triangular matrices L,U

$$L U \begin{bmatrix} \hat{x} \\ \hat{t} \end{bmatrix} = \begin{bmatrix} l_x \\ l_t \end{bmatrix}, \quad (8)$$

or with $L = U^T D$ (D ... diagonal matrix) in other formulation

$$U^T D U \begin{bmatrix} \hat{x} \\ \hat{t} \end{bmatrix} = \begin{bmatrix} l_x \\ l_t \end{bmatrix}. \quad (9)$$

After the reduction of the right hand side the solution vector is computed from

$$U \begin{bmatrix} \hat{x} \\ \hat{t} \end{bmatrix} = L^{-1} \begin{bmatrix} l_x \\ l_t \end{bmatrix} \quad (10)$$

by back-substitution.

In photogrammetric triangulation the factorization is usually done as a stepwise procedure, stopping the reduction of N right before it enters what was originally the N_{tt} -matrix. This procedure leads to the prerduced normals N_R

$$N_R \hat{t} = l_R, \quad (11)$$

with $N_R = N_{tt} - N_{xt}^T N_{xx}^{-1} N_{xt}$,

$$l_R = l_t - N_{xt}^T N_{xx}^{-1} l_x.$$

N_R is finally factorized to an upper triangle N_{RR} and t is obtained by back-substitution from

$$N_{RR} \hat{t} = l_{RR}. \quad (12)$$

The mechanization of this off-line factorization algorithm takes advantage of the fact that N_{xx} is a blockdiagonal matrix with 3x3-submatrices along the diagonal. Therefore, the reduction of the point coordinates can be done on a "point by point" basis, leaving the structure of the N_{xx} , N_{xt} matrices unchanged, i.e., producing no new fill-ins in those matrices. This particular feature, based on the structure of N_{xx} , is the key to a successful application of the Triangular Factor Update technique in on-line triangulation.

The covariance matrix for (x,t) is obtained by either inverting N

$$\Sigma_{xt} = \sigma_0^2 Q_{xt} = \sigma_0^2 N^{-1}, \quad (13)$$

or better, if U has already been computed, by deriving Q_{xt} from U according to

$$Q_{xt} = -(DU - I)Q_{xt} + DR, \quad (14)$$

with $R = L^{-1}$.

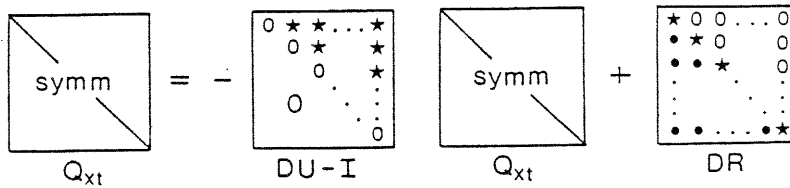
R is a "reduction matrix" of the form

$$R = \begin{bmatrix} 1 & 0 & \cdot & \cdot & \cdot & 0 \\ r_{21} & 1 & 0 & & & 0 \\ r_{31} & r_{32} & 1 & & & 0 \\ \vdots & & & \ddots & & \vdots \\ r_{n1} & r_{n2} & r_{n3} & \dots & \dots & 1 \end{bmatrix} \quad (15)$$

The elements r_{uv} of R are actually not computed. R is only formally used to demonstrate the reduction of N to an upper triangle U

$$U = RN = L^{-1}N \quad (16)$$

Equation (14) involves the matrix structures



Q_{xt} is built up rowwise from the end, starting with its last element q_{nn} . This graph shows that because of the symmetry of Q_{xt} the elements of DR marked with • are not needed in the computations.

a) Kalman Covariance Update

A system of observation equations becomes available at a time k

$$-e(k) = A(k)x - z(k) ; P(k) \quad (17)$$

The state vector x be allowed to change from stage to stage according to

$$x_k = T(k)x_{k-1} + w(k) ; P_w(k) \quad (18)$$

(18) is a first order autoregressive process. $T(k)$ is the "transition matrix". The random vector $w(k)$ has zero-mean uncorrelated components with the covariance matrix $\Sigma_w(k) = \sigma_w^2 Q_w(k) = \sigma_w^2 P_w^{-1}(k)$.

Previous to the stage k the estimate $x_{k-1/k-1}$ of the state vector and the associated weight coefficient matrix $Q_{k-1/k-1}$ are available. The Kalman updating equations for stage k are given by

$$x_{k/k-1} = T(k)x_{k-1/k-1} \quad (19a)$$

$$Q_{k/k-1} = T(k)Q_{k-1/k-1}T^T(k) + Q_w(k) , \quad (19b)$$

$$H(k) = P(k) + A(k)Q_{k/k-1}A^T(k) , \quad (19c)$$

$$K(k) = Q_{k/k-1}A^T(k)H^{-1}(k) , \quad (19d)$$

$$x_{k/k} = x_{k/k-1} + K(k)(z(k) - A(k)x_{k/k-1}) , \quad (19e)$$

$$Q_{k/k} = Q_{k/k-1} - K(k)A(k)Q_{k/k-1} . \quad (19f)$$

$K(k)$ is the "Kalman gain" matrix.

In on-line triangulation applications the state vector is not assumed to follow an autoregressive process, it is not supposed to switch stages as a random variable. With the specifications

$$T(k) = I , Q_w(k) = 0 \quad (20)$$

we get the equations

$$K(k) = Q_{k-1/k-1}A^T(k)(P(k) + A(k)Q_{k-1/k-1}A^T(k))^{-1} , \quad (21a)$$

$$x_{k/k} = x_{k-1/k-1} + K(k)(z(k) - A(k)x_{k-1/k-1}) , \quad (21b)$$

$$Q_{k/k} = Q_{k-1/k-1} - K(k)A(k)Q_{k-1/k-1} . \quad (21c)$$

Equations of the form (21a), (21b), (21c) were used in Mikhail, Helmering, 1973, Helmering, 1977, Dorrer, 1978, Dowideit, 1980, Rosculet, 1980, Kratky, 1980b. Because of their close

relation to the original Kalman equations (19d), (19e), (19f) they are called the "Kalman form" update equations (Dorrer, 1978). The key element here is the computation of the gain matrix $K(k)$, which involves the weight coefficient matrix $Q_{k-1/k-1}$ of the previous stage. $K(k)$ is used for the updating of the state vector and the associated covariance matrix.

This Kalman mechanism is designed for a constant size state vector. A modification, which also accommodates a state vector of varying size is given in Mikhail, Helmering, 1973. In the same publication an expensive updating formula for the Q_{VV} -matrix is suggested.

b) Triangular Factor Update (TFU)

Assuming that the equations (4a) represent the linearized estimation model at the stage $k-1$ of the sequential process, we get the following system if one or more observation equations are added, including new parameters $x(k)$, $t(k)$

$$\begin{aligned} -e &= A_1 x + A_2 t - \ell ; P \\ -e(k) &= A_1(k) \begin{bmatrix} x \\ x(k) \end{bmatrix} + A_2(k) \begin{bmatrix} t \\ t(k) \end{bmatrix} - \ell(k) ; P(k) \end{aligned} \quad (22)$$

The updated normal equations of the stage k are of the form

$$\dot{N} \begin{bmatrix} \hat{x} \\ \hat{t} \end{bmatrix} = \begin{bmatrix} \dot{\ell}_x \\ \dot{\ell}_t \end{bmatrix}, \quad (23)$$

with the recursions $\hat{x} \triangleq \begin{bmatrix} \hat{x} \\ \hat{x}(k) \end{bmatrix}$, $\hat{t} \triangleq \begin{bmatrix} \hat{t} \\ \hat{t}(k) \end{bmatrix}$

and

$$\dot{N} = \begin{bmatrix} \dot{N}_{xx} & \dot{N}_{xt} \\ \dot{N}_{xt}^T & \dot{N}_{tt} \end{bmatrix}, \quad \begin{aligned} \dot{\ell}_x &= \ell_x^{(0)} + A_1^T(k) P(k) \ell(k) \\ \dot{\ell}_t &= \ell_t^{(0)} + A_2^T(k) P(k) \ell(k) \end{aligned}$$

$$\dot{N}_{xx} = N_{xx}^{(0)} + A_1^T(k) P(k) A_1(k),$$

$$\dot{N}_{xt} = N_{xt}^{(0)} + A_1^T(k) P(k) A_2(k),$$

$$\dot{N}_{tt} = N_{tt}^{(0)} + A_2^T(k) P(k) A_2(k).$$

The superscripts (0) indicate that if new parameters $x(k)$, $t(k)$ are added the column/row spaces of the original N_{xx} , N_{xt} , N_{tt} matrices have to be extended by 0-vectors and the row spaces of the original vectors ℓ_x , ℓ_t by 0-elements accordingly.

With formal notations the updating of the $k-1$ stage normals can be described as

$$(N + \Delta N) \begin{bmatrix} \hat{x} \\ \hat{t} \end{bmatrix} = \begin{bmatrix} \ell_x + \Delta \ell_x \\ \ell_t + \Delta \ell_t \end{bmatrix}. \quad (24)$$

The addition of the term ΔN to the $k-1$ normals will result in alterations of the matrix factors L , U

$$(U + \Delta U) \begin{bmatrix} \hat{x} \\ \hat{t} \end{bmatrix} = (L + \Delta L)^{-1} \begin{bmatrix} \ell_x + \Delta \ell_x \\ \ell_t + \Delta \ell_t \end{bmatrix}. \quad (25)$$

If the prereduction concept is applied we obtain

$$(N_R + \Delta N_R) \hat{t} = \ell_R + \Delta \ell_R, \quad (26)$$

and finally

$$(N_{RR} + \Delta N_{RR}) \hat{t} = \ell_{RR} + \Delta \ell_{RR}. \quad (27)$$

For the deletion of observations and/or parameters the same approach can be used, just the signs of the correction terms have to be reversed and the matrix/vector spaces have to be adjusted. These formal presentations do not indicate the computational amount involved to compute the corrections ΔN_R , $\Delta \ell_R$ or ΔN_{RR} , $\Delta \ell_{RR}$. The specific sparsity structures of the normal matrices, especially the one of the N_{xx} -matrix, allow for a very efficient updating procedure (for details see Gruen, 1982). Firstly, the N_{xx} -hyperdiagonal structure yields significant storage savings, since the normals of only one object point have to be kept in core memory during the factorization. Secondly, if observations belonging to a specific object point i have to be manipulated, only those submatrices N_{xx}^i , N_{xt}^i which refer to this point have to be altered and refactorized in sequential estimation. This allows, even on minicomputers, for fast "core memory only" operations.

Individual elements/rows of the Q_{VV} -matrix can be efficiently computed by utilizing the upper triangle $\dot{U} = U + \Delta U$ of the latest stage and applying the method of "unit observation vector", as explained in Gruen, 1982. Another option utilizes the standard formula

$$Q_{VV} = P^{-1} - AN^{-1}A^T, \quad (28)$$

A ... total design matrix of (22)

\dot{N}^{-1} can be replaced by the Gauss decomposition

$$\dot{N}^{-1} = (\dot{U}^T \dot{D} \dot{U})^{-1} = \dot{U}^{-1} \dot{D}^{-1} \dot{U}^{-T}, \quad (29)$$

resulting in

$$Q_{VV} = P^{-1} - A\dot{U}^{-1}\dot{D}^{-1}(A\dot{U}^{-1})^T. \quad (30)$$

Formula (30) is computationally more efficient than (28), because it uses the inverse \dot{U}^{-1} , which is an upper triangle, instead of the full inverse \dot{N}^{-1} . Hence \dot{N}^{-1} (equivalent to $Q_{k/k}$ of the Kalman update (21c)) is not necessary for Q_{VV} -computations, and needs not to be computed unless it is required for certain statistical analysis purposes. The basic TFU operations as deletion/addition of image points, object points and photographs are described in detail with the help of examples in Gruen, 1982, and supported by more examples in Wyatt, 1982.

For statistical analysis, e.g. for blunder detection, the variance factor $\hat{\sigma}_0^2$ is needed. $\hat{\sigma}_0^2$ can be computed with the TFU technique without computing first the solution vector x , t. Expand the right hand side in (23) by the element $l_s = l^T P l + l^T(k) P(k) l(k)$. Reduce the extended normal equation system \dot{N}_E to upper triangular form

$$\dot{N}_E = \left[\begin{array}{c|c} \dot{N} & \begin{array}{c} \dot{l}_x \\ \dot{l}_t \end{array} \\ \hline \begin{array}{c} \dot{l}_x \\ \dot{l}_t \end{array} & l_s \end{array} \right] \rightarrow \left[\begin{array}{c|c} \dot{U} & \tilde{l} \\ \hline 0 & \Omega \end{array} \right]. \quad (31)$$

It can be shown that Ω is

$$\Omega = (v^T P v)^{1/2}, \quad (32)$$

so we get $\hat{\sigma}_0^2$ to

$$\hat{\sigma}_0^2 = \frac{\Omega^2}{r}, \quad r \dots \text{system redundancy} \quad (33)$$

Computationally this extended reduction is easy to handle. The reduction which generates $l_{RR} + \Delta l_{RR}$ simply has to be carried one step further, thus including the element l_s . This approach can be readily included in the sequential TFU mechanism.

c) Orthogonalization with Givens Transformations

Sequential estimation with orthogonal transformations using QR decompositions is described in Lawson, Hanson, 1974. Both additions/deletions of column and row vectors of the A-matrix are discussed there. Householder transformations as well as Givens rotations are used. Blais, 1983 recommended the application of Givens rotations for the sequential treatment of surveying and photogrammetry networks. This approach uses the estimation model (4a). Instead of obtaining the updated upper triangular matrix $\dot{U} = U + \Delta U$ (formula (25)) via Gauss factorization of the normal equations it applies Givens transformations directly to the upper triangular matrix U of the previous stage.

At stage $k-1$ the reduced system (10) takes the form

$$U \begin{bmatrix} \hat{x} \\ \hat{t} \end{bmatrix} = L^{-1} \begin{bmatrix} l_x \\ l_t \end{bmatrix} = d. \quad (10)$$

Adding one observation equation, including a set of new parameters y , to this system results in stage k and gives (with $P_{(k)} = I$)

$$\begin{bmatrix} U & 0 \\ a^T(k) \end{bmatrix} \begin{bmatrix} x \\ t \\ y \end{bmatrix} = \begin{bmatrix} d \\ \ell(k) \end{bmatrix} \quad (34)$$

with

y ... new parameter vector of length p
 $a^T(k)$... row vector with coefficients of new observation equation
 $\ell(k)$... right hand side of new observation equation

Applying a series of orthogonal Givens transformations

$$G = G_n G_{n-1} \dots G_1, \quad n \dots \text{total number of system parameters} \quad (35)$$

to system (34) results in

$$G \begin{bmatrix} U & 0 \\ 0 & 0 \\ a^T(k) \end{bmatrix} \begin{matrix} \} n-p \\ \} p \\ \} 1 \end{matrix} = \begin{bmatrix} \dot{U} \\ 0 \end{bmatrix} \begin{matrix} \} n \\ \} 1 \end{matrix}, \quad (36a)$$

$$G \begin{bmatrix} d \\ 0 \\ \ell(k) \end{bmatrix} \begin{matrix} \} n-p \\ \} p \\ \} 1 \end{matrix} = \begin{bmatrix} \dot{d} \\ \tilde{\ell}(k) \end{bmatrix} \begin{matrix} \} n \\ \} 1 \end{matrix}. \quad (36b)$$

The updated solution vector can be found by back-substitution into

$$\dot{U} \begin{bmatrix} \hat{x} \\ \hat{t} \\ \hat{y} \end{bmatrix} = \dot{d}. \quad (37)$$

The sparsity patterns of both U and $a^T(k)$ can be exploited advantageously. The updated covariance matrix of the parameters can be generated using essentially the same approach as for the updated parameters. Another option is to derive it from the upper triangle \dot{U} using the equivalent of formula (14). Methods for the deletion of observations and the addition and deletion of parameters are described in Golub, 1969, and Lawson, Hanson, 1974. Some of these methods fit nicely into the mechanization of the Givens approach. Deletion of observations can be handled by introducing these observation equations with negative weights into the standard format (34). Complex arithmetic is avoided in the computations.

For the deletion of parameters one simply cuts out the corresponding columns of the upper triangle U and transforms the remaining matrix to upper triangular form with Givens matrices. The transformation of vector d is also necessary.

Several options are available for the computation of the Q_{VV} -matrix. If the orthogonal transformation matrix $G = G_n G_{n-1} \dots G_1$ was stored, which is not very likely if storage is at a premium on small, dedicated computers, Q_{VV} as a whole or individual elements/columns can be computed according to formula (41), which is derived in the following. With a weight matrix P the factorization of $P^2 A$ with Givens transformations results in

$$P^2 A = \bar{A} = G^T \begin{bmatrix} U \\ 0 \end{bmatrix} \begin{matrix} \} n \\ \} m-n \end{matrix}. \quad (38)$$

with

$$(A^T P A)^{-1} = (\bar{A}^T \bar{A})^{-1} = U^{-1} U^{-T}, \quad \bar{v} = P^2 v, \quad G = \begin{bmatrix} G_{11} & G_{12} \\ G_{21} & G_{22} \end{bmatrix} \begin{matrix} \} n \\ \} m-n \end{matrix} \quad (39)$$

m = number of observation equations
 n = number of system parameters
 U ... upper triangle of latest stage

we obtain

$$\begin{aligned} Q_{VV} &= I - A(A^T A)^{-1} A^T = I - G^T \begin{bmatrix} U \\ 0 \end{bmatrix} U^{-1} U^{-T} \begin{bmatrix} U^T & 0 \end{bmatrix} G = \\ &= I - G^T \begin{bmatrix} I \\ 0 \end{bmatrix} \begin{bmatrix} I & 0 \end{bmatrix} G = I - \begin{bmatrix} G_{11}^T \\ G_{12}^T \end{bmatrix} \begin{bmatrix} G_{11} & G_{12} \end{bmatrix}, \end{aligned} \quad (40)$$

or finally

$$Q_{VV} = P^{-1} - P^{-1/2} \begin{bmatrix} G_{11}^T \\ G_{12}^T \end{bmatrix} \begin{bmatrix} G_{11} & G_{12} \end{bmatrix} P^{-1/2}. \quad (41)$$

Formula (41) utilizes only the submatrices G_{11} , G_{12} of the Givens matrix G . The equation is particularly inexpensive if P is diagonal.

If G has not been stored, one can use for the Q_{VV} -computation the same techniques that have been suggested for the TFU update. Either the method of "unit observation vector" or formula (30) might be used, both exploiting the latest stage upper triangular matrix U .

$\hat{\sigma}_0^2$ can be computed similarly as with the TFU technique.

An orthogonal factorization of the observation equations (4a) yields

$$G P^{1/2} \begin{bmatrix} A_1 & A_2 \end{bmatrix} = \begin{bmatrix} U \\ 0 \end{bmatrix}, \quad G P^{1/2} \ell = \begin{bmatrix} d \\ d_2 \end{bmatrix}, \quad (42)$$

and the least squares solution is obtained from

$$U \begin{bmatrix} \hat{x} \\ \hat{t} \end{bmatrix} = d. \quad (43)$$

It can be shown (Lawson, Hanson, 1974, p. 6) that

$$\Omega = (v^T P v)^{1/2} = d_2^T d_2. \quad (44)$$

Hence $\hat{\sigma}_0^2 = \frac{\Omega^2}{r}$ can easily be derived from the lower portion d_2 of the transformed right hand side.

The sequential updating of Ω can be achieved by simply adding Ω to d and updating Ω with Givens transformations (Gentleman, 1973)

$$G \begin{bmatrix} U \\ a^T(k) \end{bmatrix} = \begin{bmatrix} \dot{U} \\ 0 \\ 0 \end{bmatrix}, \quad G \begin{bmatrix} d \\ \Omega \\ \ell(k) \end{bmatrix} = \begin{bmatrix} \dot{d} \\ \dot{\Omega} \\ 0 \end{bmatrix}. \quad (45)$$

5.2. Operational Considerations

Truly sequential on-line triangulation algorithms can be evaluated in two ways. Theoretical operation counts and storage requirement counts can be combined with conceptual considerations and the experience gained in other application areas. A better basis for evaluation is provided by the actual programming of the algorithms, and the testing and comparison in a real world environment, which includes all the overhead for sorting routines, bookkeeping and I/O operations as well.

The major requirements concerning an efficient algorithm can be summarized as follows:

- low computer storage
- operations in central memory
- fast response to a variety of operations, like addition/deletion of individual and groups of image point observations, point parameters, camera parameters, the test and modification of a set of additional parameters, and the computation of individual elements or submatrices of the Q_{VV} -matrix
- accommodation of an updating procedure for initial values.

In recent years some general objections against the Kalman Covariance Update have been formulated, such as the problem of selecting proper a priori statistics, the effect of unmodelled parameters, the divergence due to the presence of non-linearities, and the effect of computer round-off arising from the generally low numerical stability of this technique (Bierman, 1977). Especially the non-linearity problem can be very critical in on-line triangulation applications (Gruen, 1983b). The major drawback of this method as applied to on-line triangulation problems, however, are its poor adaptability to sparse matrix systems, and its computational and storage requirements associated with the updating of a state vector of varying size.

In Wyatt, 1982 and Gruen, Wyatt, 1983 a thorough investigation of the Kalman Covariance Update and the Triangular Factor Gauss/Cholesky Update was performed, based on comparisons of computing times and storage requirements. The following on-line triangulation operations were considered:

- additions/deletions of individual and groups of observations
- additions/deletions of groups of parameters
- computations of individual elements of the Q_{VV} -matrix.

The results demonstrated clearly the superiority of the TFU technique. Critical computing times were better by factors 4 to 31, depending on the type of operation and the size of the system. Storage savings of factors 3 to 5 were reported.

Although the TFU technique is a fairly fast algorithm, without the use of special computer hardware like array processors the truly sequential estimation in medium and large size blocks still would result in computing times that could not satisfy real-time requirements. Hence in Gruen, 1982 an on-line triangulation concept was outlined which acknowledges the facts that the internal reliability of photogrammetric blocks has a very local structure, and that v and Q_{VV} are invariant with respect to a non-redundant datum choice. It was suggested to use only blocksubsystems in a truly sequential mode. A $3 \times 3 = 9$ photographs subsystem was recommended as a maximum configuration in case of 60% forward overlap and 60% sidelap. This subsystem is used in a window mode, and shifted systematically over the entire block.

Major problems have been encountered with sequential estimation in a non-linear system like the bundle method. The sequential estimation requires a unique set of initial values to be used throughout the entire process. A sequential updating of the parameters is not allowed, unless the whole system with all its coefficients in observation and normal equations, etc. is updated. Obviously, if the initial values are rather crude, the sequential solution will constantly be evaluating larger and larger corrections for the parameters, until the parameter vector virtually "drifts off", i.e. the solution will not be correct any more. Furthermore, blunders can seriously deteriorate the system, if not discovered and removed before the corresponding observations are finally introduced into the system. This might happen if the local reliability for erroneous observations is still weak at a certain stage because not all available rays have been included yet, thus not allowing the detection of the blunder at this stage. There are several options to tackle these problems. Some of the difficulties can be avoided if a rather strict method for the computation of initial values is used, like a dependent relative orientation plus scale transfer for the newly incoming photographs prior to the truly sequential updating. The most drastic and safest measure is the evaluation of a simultaneous solution at various stages of the process. This is always appropriate when the operator is busy with measurements or other tasks that do not require the sequential routine to be activated. An optimal moment would be after the introduction of a new model or photograph, since the greatest errors in initial values are to be expected by then.

The choice of Givens transformations over other orthogonalization methods like Householder or Gram-Schmidt is based on the inherent advantages of Givens transformations for sequential updating. The sparsity of matrices is better preserved and exploited with Givens transformations. The Householder and Gram-Schmidt algorithms produce many intermediate fill-ins, which might finally be reduced to zero, but the minimum storage requirements for the upper triangle U are exceeded considerably and also the computing times are increased. While Householder and Gram-Schmidt transformations usually require access to all columns of the unreduced part of A during computation, Givens transformations allow to process rows of A one by one, so A can be accessed in a natural way, according to the acquisition sequence of observations. Permutations of matrices for the purposes of better exploiting sparsity patterns or numerical stabilization is not appropriate for on-line triangulation. The total sparsity pattern is available anyway only after the last row of A is accumulated. One should rather acquire the measurements in a sequence that leads naturally to near-optimal matrix patterns. Any possible gain achieved by permutations is widely offset by the additional sorting load involved in these operations.

Some relevant aspects related to the solution of sparse systems using Givens transformations are discussed in George, Heath, 1980. The often cited advantage of orthogonal transformations with respect to their superior numerical stability is not a critical issue in on-line triangulation applications.

When comparing algorithms with each other one should consider realistic on-line triangulation operations. To allow for the variation of the size of the solution vector is one of those indispensable demands. Another fact to be considered is the rhythm for the acquisition and checking of image coordinate observations. An operator surely would not like to interrupt his measurement procedure after each single image point in order to check its agreement with the adjustment model. By acquiring sets of observations and by sequentially inserting them as such into the adjustment model the reliability and thus the error detection properties of the system improve faster, and the operator is not permanently disturbed and distracted.

6. Conclusions

The development of data processing equipment and triangulation techniques has reached a stage where further significant improvements in efficiency and reliability of the overall triangulation procedure can only be achieved through the utilization of sophisticated on-line triangulation techniques. As emphasized in this paper, the computational algorithm is a core element in any on-line triangulation procedure. Powerful sequential estimation algorithms are available. If to be used in on-line triangulation some of them need still to be tuned and adjusted to the particular situation in on-line triangulation, concerning matrix structures, acquisition rhythm of measurements, expansion or reduction of solution vectors, and variables required for statistical analysis. Those algorithms which have already been suggested for on-line triangulation need to be compared to each other in a practical environment. Recommendations for the professional community, in particular for equipment manufacturers, must be formulated, as to the use of these algorithms and to modifications and expansions of measurement procedures. For instance, in order to detect blunders at a most early stage, measurements and computations across strip direction on analytical plotters should be done as early as possible. This allows for a rapid improvement of the system's internal reliability. The operator should utilize the ease and speed with which remeasurements can be performed on analytical plotters. Whenever possible (small format photographs, large stage analytical plotters) more than one model should be placed on the stages. Access to different models is then feasible without significant time delay. With analytical across strip positioning the marking and transfer of artificial tie points is not necessary any more. What all this amounts to is that one should get rid of the conventional measurement and computational concepts, that are related to the capabilities of analog instruments and comparators, and do not consider the existing possibilities that are offered by modern analytical plotters.

Future developments will see the use of array processors for further speed-up of computations. Thus the sequentially manageable block size will increase. Sequential algorithms will be developed and tailored to the specific matrix structures arising with the use of non-conventional sensor geometries. The on-line triangulation procedure with its quasi real-time responses will not only serve for data-processing, but will also support the design of a triangulation network. Softcopy analytical plotters will be used that allow to perform measurements and remeasurements even faster than it is currently possible. With the advent of more powerful and reliable correlation methods the measurement and transfer of tie points will be performed automatically in the digital domain. Semi-automatic or fully automatic digital real-time triangulation systems can thus be envisioned for a future not too far ahead.

REFERENCES

- Ackermann, F., 1980: Blockadjustment with additional parameters. *International Archives of Photogrammetry*, Vol. XXIII, B3, Commission III, pp. 1-10.
- Andrews, D.F., 1974: A robust method for multiple linear regression. *Technometrics*, 16, pp. 523-531.
- Baarda, W., 1967: Statistical concepts in geodesy. *Publications on Geodesy*, 2:4, Netherlands Geodetic Commission, Delft.
- Barnett, V., Lewis, T., 1978: *Outliers in statistical data*. New York, John Wiley.
- Beckman, R.J., Cook, R.D., 1983: Outlier ...s. *Technometrics*, 25, pp. 119-163.
- Benciolini, B., Mussio, L., Sanso, F., 1982: An approach to gross error detection more conservative than Baarda Snooping. *Proceedings of the Symposium of Commission III of the ISPRS*, Helsinki.
- Bierman, G.J., 1977: *Factorization methods for discrete sequential estimation*. Academic Press, New York.
- Blais, J.A.R., 1983: Linear least-squares computations using Givens transformations. *The Canadian Surveyor*, Vol. 37, No. 4, pp. 225-233.
- Boullion, T., Odeil, P., 1971: *Generalized inverse matrices*. Wiley Interscience, Wiley and Sons, New York.
- Clerici, E., Harris, M.W., 1980: A premium-protection method applied to detection and rejection of erroneous observations. *Manuscripta Geodaetica*, Vol. 5, pp. 283-298.

- Dorrer, E., 1978: A contribution to sequential on-line numerical aerial triangulation. Presented Paper, Symposium of Commission III of the ISP, Moscow.
- Dorrer, E., 1981: Real time orientation as integral part of on-line analytical aerial triangulation. *Photogrammetria*, 36, pp. 111-118.
- Dowideit, G.R., 1980: An online bundle block adjustment for analytical plotter. *International Archives of Photogrammetry*, Vol. XXIII, B3, Commission III, pp. 168-177.
- Dowideit, G.R., 1982: Experience with improved on-line-bundle-block-adjustment on the APC3. *Proceedings of the Symposium of Commission III of the ISPRS, Helsinki*.
- Dowman, I.J., 1977: Developments in on-line techniques for photogrammetry and digital mapping. *Phot. Record*, 9 (49), pp. 41-54.
- Draper, N.R., Van Nostrand, R.C., 1979: Ridge regression and James-Stein estimation: Review and comments. *Technometrics*, Vol. 21, No. 4, pp. 451-466.
- El-Hakim, S.F., 1982: Data snooping with weighted observations. *Proceedings of the Symposium of Commission III of the ISPRS, Helsinki*.
- Elios, M.W., 1982: Gross error detection and location in bundle blocks using multi-dimensionally derived test values. Master Thesis, Department of Geodetic Science and Surveying, The Ohio State University.
- Foerstner, W., 1979: Sequential checking of model coordinates with a program for strip adjustment. Presented Paper, Symposium on On-Line Analytical Triangulation, ISP WGIII/4, Ottawa.
- Foerstner, W., 1981: Reliability of parameter estimation. In German. *Proceedings Seminar "Mathematical Models for the Detection of Blunders and Systematic Errors in Geodetic-Photogrammetric Point Positioning"*, Stuttgart, November 26-27.
- Fuchs, H., 1981: Adjustment by minimizing the sum of absolute residuals. Paper presented to the International Symposium on Geodetic Networks and Computations, Munich.
- Fuchs, H., Leberl, F., 1982: CRISP - a software package for close-range photogrammetry for the Kern DSR-1 analytical stereoplotter. *International Archives of Photogrammetry*, Vol. 24, V/1, Symposium of Commission V of the ISPRS, York, pp. 175-184.
- Gentleman, W.M., 1973: Least squares computations by Givens transformations without square roots. *Journal of the Institute of Mathematical Applications*, No. 12, pp. 329-336.
- George, A., Heath, M.T., 1980: Solution of sparse linear least squares problems using Givens rotations. *Linear Algebra and its Applications*, No. 34, pp. 69-83.
- Gill, P.E., Golub, G.H., Murray, W., Saunders, M.A., 1974: Methods for modifying matrix factorizations. *Mathematics of Computation*, Vol. 28, No. 126, pp. 505-535.
- Gruen, A., 1978a: Experiences with self-calibrating bundle adjustment. Presented paper, ACSM-ASP Convention, Washington, D.C., February/March.
- Gruen, A., 1978b: Progress in photogrammetric point determination by compensation of systematic errors and detection of gross errors. *Nachrichten aus dem Karten- und Vermessungswesen, Reihe II: Übersetzungen, Heft Nr. 36*, pp. 113-140.
- Gruen, A., 1978c: Accuracy, reliability and statistics in close-range photogrammetry. Presented paper, Symposium of Commission V of the ISP, Stockholm.
- Gruen, A., 1980: Internal reliability models for aerial bundle systems. *International Archives of Photogrammetry*, Vol. XXIII, B3, Commission III, pp. 272-283.
- Gruen, A., 1981: Reliability structures of small bundle systems for on-line triangulation. *Proceedings of the ASP Convention, San Francisco, September*, pp. 299-309.
- Gruen, A., 1982: An optimum algorithm for on-line triangulation. *Proceedings of the Symposium of Commission III of the ISPRS, Helsinki*.
- Gruen, A., 1983a: The treatment of additional parameters in self-calibrating bundle adjustment. Internal research paper, unpublished, Department of Geodetic Science and Surveying, The Ohio State University.
- Gruen, A., 1983b: Operational aspects of the Triangular Factor Update in on-line triangulation. Presented paper at the Workshop of the ISPRS Working Group III/2, National Research Council, Ottawa.
- Gruen, A., Wyatt, A., 1983: Algorithmic problems in on-line bundle triangulation. Presented paper, ACSM-ASP Convention, Washington, D.C., March.
- Heindl, F.J., 1981: Direct editing of normal equations of the banded-bordered form. *Photogrammetric Engineering and Remote Sensing*, Vol. 47, No. 4, pp. 489-493.
- Helava, U.V., 1958: New principles for photogrammetric plotters. *Photogrammetria*, 2.
- Helmering, R.J., 1977: A general sequential algorithm for photogrammetric on-line processing. *Photogrammetric Engineering and Remote Sensing*, Vol. 43, No. 4, pp. 469-474.
- Hobbie, D., 1978: On-line aerial triangulation with the Planicomp C-100 analytical stereoplotting system. *Nachrichten aus dem Karten- und Vermessungswesen, Reihe II: Übersetzungen, Heft Nr. 36*, pp. 141-149.
- Hocking, R.R., 1983: Developments in linear regression methodology: 1959-1982. *Technometrics*, 25, pp. 219-246.
- Hoehle, J., Huegeli, P., Schaefer, T., 1982: Control point determination with the Avioplot RAP system. *Proceedings of the Symposium of Commission III of the ISPRS, Helsinki*.
- Hoerl, A.E., Kennard, R.W., 1982: Ridge regression bibliography update. Accession Report 16487, DuPont Co., Wilmington, Del.
- Huber, P.J., 1981: *Robust statistics*. John Wiley, New York.
- Jacobsen, K., 1982: Selection of additional parameters by program. *Proceedings of the Sym-*

- posium of Commission III of the ISPRS, Helsinki.
- Jaksic, Z., 1963: Aerial triangulation on the analytical plotter. *The Canadian Surveyor*, Vol. 17, No. 2, pp. 183-189.
- Jaksic, Z., 1967: Solution to aerial triangulation problems using the N.R.C. Analytical Plotter. *Photogrammetria*, Vol. 22, No. 1.
- Jaksic, Z., 1974: On-line computational photogrammetry in surveying and mapping. *Proceedings of the XIVth FIG Congress, Commission 5, Washington, D.C.*, pp. 1-8.
- Kilpelae, E., Heikkelae, J., Inkilae, K., 1982: Some results of gross error detection tests in relative orientation and scale transfer. *Proceedings of the Symposium of Commission III of the ISPRS, Helsinki*.
- Koch, K.R., 1980: Parameterschätzung und Hypothesentests in linearen Modellen. *Ferd. Duemmler Verlag, Bonn*.
- Kratky, V., 1976: Analytical on-line systems in close-range photogrammetry. *Photogrammetric Engineering and Remote Sensing*, Vol. 42, No. 1, pp. 81-90.
- Kratky, V., 1979: On-line triangulation. *The Canadian Surveyor*, Vol. 33, No. 2, pp. 162-176.
- Kratky, V., 1980a: On-line analytical triangulation on the ANAPLOT. *Proceedings of the Analytical Plotter Symposium, Reston*, pp. 207-224.
- Kratky, V., 1980b: Present status of on-line analytical triangulation. *International Archives of Photogrammetry*, Vol. XXIII, B3, Commission III, pp. 379-388.
- Kratky, V., 1982: Recent progress in the NRC on-line photogrammetric triangulation. *Proceedings of the Symposium of Commission III of the ISPRS, Helsinki*.
- Kratky, V., El-Hakim, S.F., 1983: Quality control for NRC on-line triangulation. *Photogrammetric Engineering and Remote Sensing*, Vol. 49, No. 6, pp. 763-769.
- Kubik, K., 1982: An error theory for the Danish method. *Proceedings of the Symposium of Commission III of the ISPRS, Helsinki*.
- Larsson, R., 1982: General Triangulation - Incorporating photogrammetric and other observations. *Proceedings of the Symposium of Commission III of the ISPRS, Helsinki*.
- Lawson, Ch.L., Hanson, R.J., 1974: Solving least squares problems. *Prentice-Hall, Englewood Cliffs, N.J.*
- Madani, M., 1984: The accuracy potential of non-metric photographs in on-line triangulation. *Dissertation, Department of Geodetic Science and Surveying, The Ohio State University, in preparation*.
- Mikhail, E.M., Helmering, R.J., 1973: Recursive methods in photogrammetric data reduction. *Photogrammetric Engineering*, Vol. 39, No. 9, pp. 983-989.
- Molenaar, M., 1981a: Risk minimization for error detection procedures in photogrammetry. *ITC Journal*, 1981-2, pp. 185-201.
- Molenaar, M., 1981b: Some problem areas in the field of quality control for aerotriangulation. *ITC Journal* 1981-3, pp. 253-265.
- Molenaar, M., 1981c: Several aspects of the sequential processing of photogrammetric bundle blocks. *Invited Paper, Seminar 'Mathematical Models', ISPRS WG III/1, Stuttgart*.
- Pope, A.J., 1976: The statistics of residuals and the detection of outliers. *NOAA Technical Report NOS 65, NGS 1, Rockville*.
- Radwan, M.M., Stefanovic, P., Adhikary, K.R., 1982: Triplets and quadruplets in on-line photogrammetric triangulation. *Supplement to the Proceedings of the Symposium of Commission III of the ISPRS, Helsinki*.
- Rosculet, D., 1980: Recursive methods for the simultaneous adjustment of photogrammetric and geodetic observations in analytical aerotriangulation. *International Archives of Photogrammetry*, Vol. XXIII, B3, Commission III, pp. 617-625.
- Salmenperae, H., Vehkaperae, H., 1976: The use of a minicomputer in photogrammetric data logging and data processing. *International Archives of Photogrammetry*, Vol. 22, Commission III.
- Sarjakoski, T., 1982: Bundle block adjustment based on conjugate gradient and direct solution method. *Proceedings of the Symposium of Commission III of the ISPRS, Helsinki*.
- Seymour, R.H., 1982: US-2 Analytical Stereoplotter. *Photogrammetric Engineering and Remote Sensing*, Vol. 4, No. 6, pp. 931-937.
- Stefanovic, P., 1980: Pitfalls in blunder detection techniques. *International Archives of Photogrammetry*, Vol. XXIII, B3, Commission III, pp. 687-700.
- Wyatt, A.H., 1982: On-line photogrammetric triangulation. An algorithmic approach. *Master Thesis, Department of Geodetic Science and Surveying, The Ohio State University*.