

ISSN 1682-1750

THE INTERNATIONAL ARCHIVES OF THE PHOTOGRAMMETRY, REMOTE SENSING AND SPATIAL INFORMATION SCIENCES
ARCHIVES INTERNATIONALES DE PHOTOGRAMMÉTRIE, DE TÉLÉDÉTECTION ET DE SCIENCES DE L'INFORMATION SPATIALE
INTERNATIONALES ARCHIV FÜR PHOTOGRAMMETRIE, FERNERKUNDUNG UND RAUMBEZOGENE INFORMATIONSWISSENSCHAFTEN

PROCEEDINGS

VOLUME
VOLUME
BAND

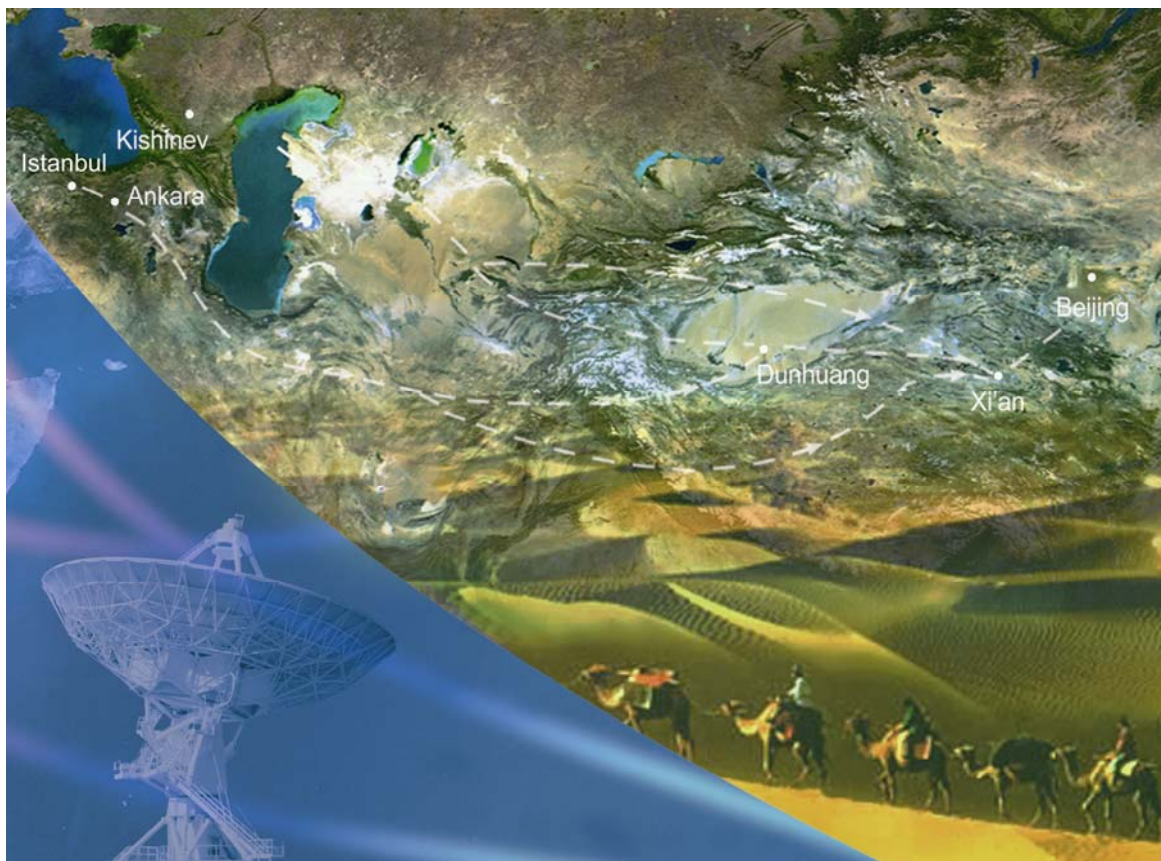
XXXVII

PART
TOME
TEIL

B6b

COMMISSION
COMMISSION
KOMMISSION

YOUTH FORUM



Edited by:
CHEN Jun, JIANG Jie, Kohei CHO

This compilation © 2008 by the International Society for Photogrammetry and Remote Sensing. Reproduction of this volume or any parts thereof (excluding short quotations for the use in the preparation of reviews and technical and scientific papers) may be made only after obtaining the specific approval of the publisher. The papers appearing in this volume reflect the authors' opinions. Their inclusion in this publication does not necessarily constitute endorsement by the editors or by the publisher. Authors retain all rights to individual papers.

Copies of this book/CDROM are available from:

Reed Business - Geo (former GITC) by
P.O.Box 112
8530 AC Lemmer
The Netherlands
Tel: +31 (0) 514 56 18 54
Fax: +31 (0) 514 56 38 98
E-mail: geo@reedbusiness.nl
<http://www.reedbusiness-geo.nl>

Copyright 2008

ISPRS Council 2004-2008

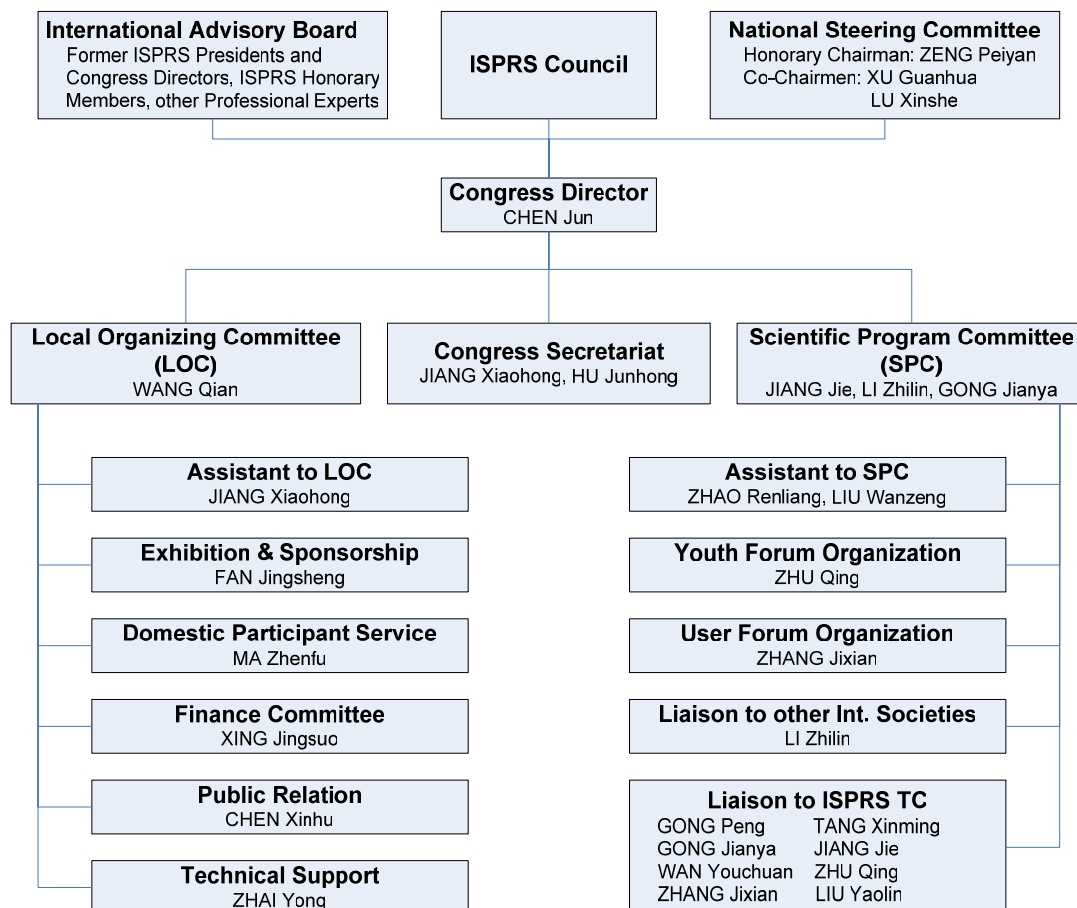
President	Ian Dowman	United Kingdom
Secretary General	Orhan Altan	Turkey
Congress Director	Chen Jun	P. R. China
First Vice President	John Trinder	Australia
Second Vice President	Emmanuel Baltsavias	Switzerland
Treasurer	Stanley Morain	USA

Technical Commission Presidents 2004-2008

Commission I	Alain Baudoin	France
Commission II	Wolfgang Kainz	Austria
Commission III	Wolfgang Foerstner	Germany
Commission IV	Shailesh Nayak	India
Commission V	Hans-Gerd Maas	Germany
Commission VI	Kohei Cho	Japan
Commission VII	John van Genderen	The Netherlands
Commission VIII	Ammatzia Peled	Israel

In cooperation with Working Group Chairpersons responsible for the reviewing of extended Abstracts and acceptance of contributions. Authors delivered camera ready manuscripts and selected the keywords.

Congress Organising Committee



Introduction

During the ISPRS Congress in Istanbul in 2004, the first ISPRS Youth Forum (YF) was successfully organized. One of the main purposes of the YF was to provide students and young researchers more chance to present papers at the Congress. Many good papers were submitted to the first YF. At the panel discussion of the YF, Council members and the Commission VI members discussed with students about the future activities of students within ISPRS. Following the discussion, it was decided to set up the Student Consortium (SC) as the first ISPRS official framework for students. Since then, the SC has organized two summer schools, submitted a number of newsletters and expanded its' members world wide.

Following the activities of SC, the interest to the YF has been expanded. It is our great pleasure to organize the second YF in Beijing connected with ISPRS Congress 2008. The total number of the full papers submitted to the YF was 59. Reflecting the various interests of the students and the young researchers of ISPRS, the themes of the papers covered various aspects in the fields of remote sensing, photogrammetry and Spatial Information Sciences. From each paper, you can feel the energy and motivation of the young authors. I have no doubt that some of the authors in the Proceedings may be leading our society in the future. I would like to thank all the young authors for their great contribution. I also would like to thank the Congress Director Chen Jun, the Scientific Program Committee Executive Chair Jiang Jie and the Local Organizing Committee of China for their dedicated work on preparing the proceedings.

Kohei Cho, President of ISPRS Technical Commission VI
Mojca K. Fras, Chair of ISPRS Working Group VI/5

Table of Contents

Multi-Resolution Representation of Digital Terrain Models with Topographical Features Preservation <i>Zhi Wang, Qingquan Li, Besheng Yang</i>	1
A Multi-Scale Line Tree Structure for Progressive Transmission of Vector Data across the Web <i>REN Yingchao, ZHU Lin, YANG Chongjun</i>	9
Land Cover Changes in Selected Areas under Direct Influence of the 'Egnatia' Highway, in Greece <i>A. Stamou, Ch. Georgiadis, P. Patias</i>	15
A Soil Erosion Model Based on Cellular Automata <i>YUAN Lifeng</i>	21
Accuracy of Crown Segmentation and Estimation of Selected Trees and Forest Stand Parameters in Order to Resolution of Used DSM and nDSM Models Generated from Dense Small Footprint Lidar Data <i>K. Stereńczak, K. Będkowski, H. Weinacker</i>	27
Active-Passive Optical Remote Sensing for Weather and Climate Research <i>Jun LI, Wei GONG, Zhongmin ZHU, Yingying MA</i>	33
Combining Photogrammetry and Laser Scanning for DEM Generation in Steep High-Mountain Areas <i>M. Züblin, L. Fischer, H. Eisenbeiss</i>	37
LIDAR Point Cloud Based Fully Automatic 3D Single Tree Modeling in Forest and Evaluations of the Procedure <i>Yunsheng Wang, Holger Weinacker, Barbara Koch, Krzysztof Stereńczak</i>	45
Building Roof Reconstruction from LIDAR Data and Aerial Images through Plane Extraction and Colour Edge Detection <i>Angelina Novacheva</i>	53
Automatic Road Extraction of Urban Area From High Spatial Resolution Remotely Sensed Imagery <i>Yiting Wang, Xinliang Li, Liqiang Zhang, Wuming Zhang</i>	59
Multitemporal SPOT Images for Urban Land-Cover Change Detection over Stockholm Region between 1986 and 2004 <i>Karoliina Kolehmainen , Yifang Ban</i>	63
Development of 3D Monitoring Dataset for Shop and Office Tenants Variations in Broad Urban Area by Spatio-temporal Integrating Digital Maps and Yellow Page Data <i>Yuki Akiyama, Takeshi Shibuki, Satoshi Ueyama, Ryosuke Shibasaki</i>	67
Detection and Prediction of Land Use Change in Beijing based on Remote Sensing and GIS <i>Wenli Huang, Huiping Liu, Qingzu Luan, Qingxiang Jiang, Junping Liu, Hua Liu</i>	75
A Research on the Assessment of Regional Ecological Security Based on GIS & RS <i>Zou xiuping, Chen Shaofeng, Qi Qingwen</i>	83
Lane-oriented 3D Dynamic Segmentation Method <i>LI Yuan</i>	87
A 3D Model of Castle Landenberg (CH) from Combined Photogrammetric Processing of Terrestrial and UAV-based Images <i>Hannes Püschel, Martin Sauerbier, Henri Eisenbeiss</i>	93
An Algorithm about Association Rule Mining Based on Spatial Autocorrelation <i>Jiangping Chen, CHINA, UK</i>	99
An Algorithm for Remote Sensing Image Classification Based on Artificial Immune B-Cell Network <i>Shizhen Xu, Yundong Wu</i>	107

Research on Urban Surface Emissivity Based on Unmixing Pixel <i>D. Q. Peng, Y. H. Chen, J. Li, J. Zhou, W. Ma</i>	113
Development of Convenient 3D Measurement Using Consumer Grade Digital Camera: The 3DiVision Examples <i>Misato Iwamoto, Hirofumi Chikatsu</i>	119
Building Extraction from ALS Data Based on Regular and Irregular Tessellations <i>Natalia Borowiec</i>	125
M&S-based Space Remote Sensor Design & Analysis <i>YANG Lei</i>	133
Novel MIMO SAR for Urban Remote Sensing Applications <i>Wen-Qin Wang, Qicong Peng, Jingye Cai</i>	139
Free Image Registration and Mosaic Based on TIN and Improved SZELISKI Algorithm <i>WANG Yue, WU Yun-dong, WANG Hui</i>	145
Research on Knowledge-Based Predictive Natural Resource Mapping System <i>Fei Du, A-Xing Zhu</i>	151
Research on Close-range Photogrammetry with Big Rotation Angles <i>Lu Jue</i>	157
Towards 3D LBS - Challenges and Opportunities <i>F. Wang, J. W. Liu</i>	163
The Eliminate Inconsistent Algorithm and Enhancement of Large Plane Array CCD Images <i>GENG Lichuan, WU Yundong, GENG Zexun</i>	171
Landscape Pattern Change and Associated Environmental Implications in HaiHe River BASIN, CHINA <i>Yusheng Shi, Jieying Xiao, Yanjun Shen</i>	177
Experimental Study Of Artificial Neural Network for Geometric Rectification of Satellite Imagery <i>Qingzu Luan, Huiping Liu</i>	183
Comparison of Pansharpening Algorithms for Combining Radar and Multispectral Data <i>S.Klonus</i>	189
Primary Validation of the Syntem Aerosol Retrieval Model Over Beijing Area Using Aeronet Data <i>Linyan Bai, Yong Xue, Jie Guang, Ying Wang, Yingjie Li, Jianwen Ai, Wei Wan, Jianping Guo</i>	195
Spatial Distribution and Seasonal Changes of Urban and Suburban Surface Radiation Budget in Beijing <i>J. Zhou, Y. H. Chen</i>	201
Vegetation Coverage Change in Miyun County from Remote Sensing and Its Affecting Fators Based on 3S <i>Gai Yongqin, Li Xiaobing, Xi Bin, Hu Ying</i>	207
Study on Methods of Noise Reduction in a Stripped Image <i>Chang-yan Chi, Zhang Ji-xian, Liu Zheng-jun</i>	213
Modeling of Change-only Information and Updating of Spatial Data <i>Ying Shen</i>	217
Monitoring the Growth of Settlements in Ilroin, Nigeria (a GIS and Remote Sensing Approach) <i>Zubair Ayodeji Opeyemi</i>	225
Ground Deformation Detection along the Qinghai-Tibet Railway <i>W. Y. Gong, .J. X. Zhang, Y. H. Zhang</i>	233
A Rapid Method for Water Target Extraction in SAR Image <i>WANG Dong, QIN Ping</i>	237

A Model of Topographic Correction and Reflectance Retrieval for Optical Satellite Data in Forested Areas <i>Cheng Wei, Tian Qingjiu, Wang Liming</i>	243
A Computational Method to Emulate Bottom-up Attention to Remote Sensing Images <i>X. Chen, H. Huo, F. Tao, D. Li, Z. Li</i>	249
Research on China's GIS Industry <i>Bo Xiaoying, Zhang Lingling</i>	255
Quantitative Analysis of Land Surface Temperature-vegetation Indexes Relationship Based on Remote Sensing <i>MA Wei, CHEN Yun-hao, ZHOU Ji, Gong adu</i>	261
K-order-based Topological Relations of Geo-entities in 3D Raster Space <i>GUO Jiateng, WU Lixin, MA Hongbin, CHE Defu</i>	265
Remote Sensing Detection for Subsidence-Resulted Water Body and Solid-Waste Dump in Coal Mine Yanzhou Coal Mining Area Being a Case <i>MA Baodong, WU Lixin, LIU Shanjun</i>	269
Management and Visualization of Huge Range Images and Digital Images <i>Guo. Ming, Wang. Yanmin</i>	273
Automatic Eddy Extraction from SST Imagery Using Artificial Neural Network <i>Jin Hai, Yang Xiaomei, Gong Jianming, Gao Zhenyu</i>	279
Ore-Search Information Using Aster Data in Bashibulake Uranium Deposit Area in XinJiang <i>Yang Xu, Liu De-Chang, Zhang Jie-Lin</i>	283
The Development of Information System of Unban Underground Pipeline Network Based on MapObjects <i>J. Guo, J. X. Zhang, Y. H. Zhang, C.C. Wang</i>	287
Using SDI and WFS to Quality Control in Field Data Collection <i>Mohammad Hosseinpour, Ali Asghar Alesheikh, Majid Hamrah</i>	293
Quantitative Estimation of Desertification Degree Based on PCA Fusion and SVM Using CBERS-02B <i>HE Qisheng, Li Guoping, CAO Chunxiang, ZHANG Hao, BAO Yunfei, CHANG Chaoyi, LI Xiaowen</i>	297
Analysis of Landscape Dynamics in ShangHai Using Landscape Metrics: Effects of Spatial Resolutions <i>Qian Zhang, Yifang Ban, Jiyuan Liu, Quanqin Sha, Yunfeng Hu</i>	301
Hyperspectral Images for Uncertainty Information Interpretation Based on Fuzzy Clustering and Neural Network <i>Huan Li, Hongxia Luo, Ziyi Zhu, Guangpeng Liu</i>	307
Spatio-Temporal Analysis of Forest Areas <i>Ivana Dabanović</i>	313
Investigations of SAR Polarimetric Features on Land-Cover Classification <i>Liang Gao, Yifang Ban</i>	317
Research on the Visualization System and Applications of Uncertainty in Remote Sensing Data Classification <i>YanLiu, Yanchen Bo</i>	323
Land Cover Classification with Multi-Source Data Fusion (ENVISAT-ASAR and IRS P6 LISS-III) in Tropical Forested Area, India <i>Vyjayanthi Nizalapur</i>	329
Upgrading Fundamental GIS Databases for Navigation from High Resolution Satellite Imagery <i>MA Li, LI Jiatian, CHEN Jun</i>	335

Feasibility of Using Digital Photography for Environmental Monitoring of Animals in an Artificial Reef

Wang xi-feng, Tang Yong, Zhang zhong-zhe, Liu hai-ying 339