

Contents

1.	Introduction	3
1.1.	Welcome by Rector ITC	3
1.2.	Welcome by the President of ISPRS Technical Commission II	3
1.3.	Words of welcome by the Conference Chair.....	3
1.4.	Information about Enschede.....	4
1.5.	Contact information.....	4
2.	Programme Organisation	5
2.1.	Scientific Programme Committee	5
2.2.	Local Organising Committee	5
3.	Symposium Support Programme	6
3.1.	Social event.....	6
3.2.	List of Sponsors.....	6
3.3.	Exhibition.....	6
4.	General Information	7
4.1.	Venue.....	7
4.2.	Registration desk / Symposium secretariat	7
4.3.	Name badges.....	7
4.4.	Refreshments.....	8
4.5.	Language of the symposium.....	8
4.6.	Internet connection.....	8
4.7.	Information for speakers	9
4.8.	Information for Poster sessions.....	9
4.9.	Attendance certificates.....	9
4.10.	Travel Service	9
4.11.	Illness.....	9
4.12.	Safety	9
4.13.	Smoking policy.....	10
4.14.	Mosque	10
4.15.	Library	10
5.	Detailed Programme of the Symposium	11
	Tuesday 12 June	11
	Wednesday 13 June	11
	Thursday 14 June.....	13
	Friday 15 June.....	14

1. Introduction

1.1. Welcome by Rector ITC

We are happy to see you in the Netherlands and more specifically here in Enschede at ITC. We have been known for more than 55 years as an institute for capacity building in the field of Geo-Information Science and earth Observation. Our research and PhD program, our educational programs and project services focus especially on the needs of the lesser developed countries. We have more than 18000 alumni in more than 165 countries. Therefore we are a truly international community. We thought this to be the right location for this symposium.

The Conference Chair Alfred Stein and his team, his colleagues in the Netherlands and abroad did their very best to prepare this Symposium. It is now up to you to make it a success. On behalf of the ITC community I wish you a fruitful and enjoyable Symposium.

Martien Molenaar

1.2. Welcome by the President of ISPRS Technical Commission II

I would like to welcome all participants of the 5th International Symposium on Spatial Data Quality to this outstanding event. Spatial data quality has always been an important component of mapping and spatial data handling. This subject has gained increasing attention since the widespread use of digital spatial data in almost all aspects of our everyday lives has become a fact. The International Society for Photogrammetry and Remote Sensing through its Technical Commissions focuses especially on theoretical issues in spatial data handling in its Technical Commission II. Working Group II/7 on the Quality of Spatial Data and Models is one of the seven working groups in this commission. As the president of Technical Commission II I am particularly satisfied that the key persons in the field of spatial data quality have come together to discuss topics and to report on research results in this important area. I would like to thank the organizers for their hard work and the excellent program that they have put together and I wish the symposium much success as well as many stimulating discussions.

Wolfgang Kainz

1.3. Words of welcome by the Conference Chair

Welcome to the 5th International Symposium for Spatial Data Quality! We organize this symposium jointly with the ISPRS commission II, working group 7. The general theme of the meeting is "Data quality in space and time". We have tried to prepare for you an exciting and interesting programme, both scientifically and socially. We have been very pleased by the high quality of the papers that have been accepted for both oral and poster presentations, we are very happy with the keynote speakers who have been willing to give their scientific vision on the subject and we trust that you will go home after this event with new insights, knowledge, ideas, and, of course, new contacts and friends.

If there are any aspects of the symposium organisation which are not satisfactory, or are a problem for you, please come and discuss it with me personally, as our Organising Committee has really done the best they could so any deficiencies are due to my neglect.

We wish you an enjoyable stay in Enschede during the Symposium, and hope you will take advantage of the opportunity to build new networks, strengthen existing relations and learn new things during the various technical and social activities planned during your stay here.

Alfred Stein

1.4. Information about Enschede

Enschede, with a population of 160.000 is in the eastern part of the Netherlands, 5 km from the border with Germany. It is a major educational centre with ITC, the University of Twente, the Enschede Polytechnic and many other schools and colleges in the area. The Symposium is held in ITC, with excellent lecture rooms and exhibition areas.

Detailed information about the city of Enschede can be found in the brochure "Welcome to Enschede" which was handed to you in the conference bag.

1.5. Contact information

If you have questions during the symposium please go to the registration desk.

2. Programme Organisation

2.1. Scientific Programme Committee

- Prof. Alfred Stein (The Netherlands, chair)
- Dr. Hande Demirel (Turkey, scientific secretary)
- Prof. Peter Fisher (UK)
- Prof. Andrew Frank (Austria)
- Prof. Michael Goodchild (USA)
- Prof. Robert Jeansoulin (France)
- Prof. Deren Li (China)
- Prof. Wu Lun (China)
- Prof. Orhan Altan (Turkey)
- Prof. Martien Molenaar (The Netherlands)
- Prof. Wenzhong Shi (Hong Kong)
- Dr. Rodolphe Devillers (Canada)
- Dr. Gerard Heuvelink (The Netherlands)
- Assoc. Prof. Gary Hunter (Australia)
- Prof. Geoff Henebry (USA)
- Prof. Mike Worboys (USA)
- Prof. Mir Abolfazl Mostafavi (Canada)
- Dr. David Rossiter (The Netherlands)

2.2. Local Organising Committee

- Wietske Bijker
- Luc Boerboom
- Rolf de By
- Frans Gollenbeek
- Janneke Kalf
- David Rossiter
- Alfred Stein
- Saskia Tempelman

3. Symposium Support Programme

3.1. Social events

Tuesday 12 June: 17.00 – 19.00 Icebreaker reception at ITC (dress: informal)
Wednesday 13 June: 17.00 – 18.30 Reception during poster session (dress: informal)
Thursday 14 June: 13.00 – 22.00 Excursion to Ootmarsum and dinner (dress: informal)

3.2. List of Sponsors

- ISPRS
- ITC
- Tailor & Francis Group
- Kadaster
- Coordinates
- C.T. de Wit Graduate School
for Production Ecology and Resource Conservation (PE&RC)
- CTIT: Centre for Telematics and Information Technology

3.3 Exhibition

A small exhibition is located in room 0-142/146.
Exhibitors are:

- 1Spatial, United Kingdom
- Elsevier, The Netherlands

If you have any information to hand out to the delegates, you may put this in room 0-142/146

4. General Information

The overall topic of the 5th International Symposium for Spatial Data Quality is *"Data quality in space and time"*. The Technical Program of the Symposium embraces Opening Session, 5 Keynote speakers, 14 Technical Sessions, and 1 poster session.

On this page you will find arrangements and programme information for the Symposium. Information regarding the keynote speakers, the technical sessions, the poster session and social event, organized by the Organizing Committee are also to be found here.

4.1. Venue

The Symposium will be held at ITC in Enschede. All meeting rooms for the Symposium will be located at ITC. Room 2-004 is on the second floor room number 004. Room 0-142 is on the ground floor room 042. Signs will direct participants to rooms and the hostess team is present to ask for directions.

Room assignments are as follows:

Opening Session	Auditorium
Keynote speakers	Auditorium
Technical Sessions	Rooms 2-004/008, 3-008, Auditorium
Poster Session	Annex/ 0-142/ 146
Exhibition	Annex/ 0-142/ 146
Symposium Secretariat	Reception desk, ITC Entrance hall
Speaker's Desk	Room 0-137
Coffee Breaks	Annex/ 0-142/ 146
Ice breaker reception Tuesday	Annex/ 0-142/ 146
Reception Wednesday	Annex/ 0-142/ 146
Symposium Diner	Restaurant De Watermolen (Denekamp)
Lunch	Annex/ 0-142/ 146

4.2. Registration desk / Symposium secretariat

The registration desk for the Symposium will be located in the ITC Entrance Hall. In case you have any questions, or if you need any facility, please go to the Registration desk/Symposium secretariat.

The registration desk is open according to the following schedule of operation:

Tuesday 12 June	17.00 - 19.00
Wednesday 13 June	08.00 - 17.00
Thursday 14 June	08.00 - 14.00
Friday 15 June	08.00 - 15.00

4.3. Name badges

Name badges and conference information will be handed to all delegates when registering. Name badges are required for entry to all Symposium events: the Plenary and Technical Sessions and Poster Session, including the coffee breaks and the social events.

4.4. Refreshments

Coffee and tea will be served in room 0-142/0-146. Coffee breaks are included in the registration fee of all registered participants and guests of the Symposium. Cold water will be available at all times.

From Wednesday 13 June to Friday 15 June:

08:00 - 09:00 Coffee/ tea

10:30 - 11:00 Coffee/ tea

15:45 - 16:15 Coffee/ tea

Lunch will be served to all symposium participants' room 0-142/ 0-146. Participants should wear their name badge to enter the lunch area. The early morning coffee, the lunches and coffee/tea breaks are all included in the Registration Fee.

Lunch breaks are as follows:

Wednesday 13 June: 12.30-14.00 hrs

Thursday 14 June: Packed Lunch

Friday 15 June: 12:30 - 13:30 hrs

4.5. Language of the symposium

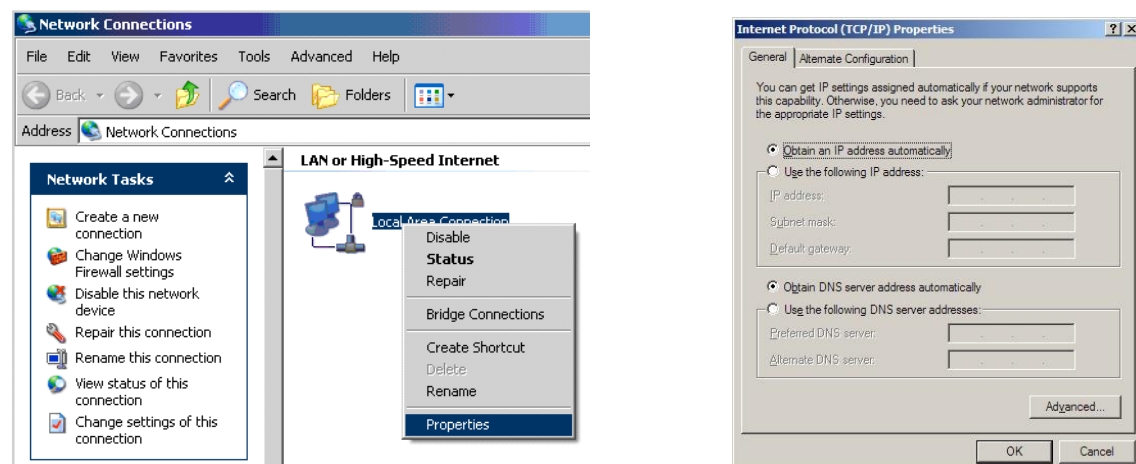
The working language of the Symposium will be English.

4.6. Internet connection

During the Symposium wireless internet connection will be available at the Conference Area on the ground floor. Internet computers will also be available for usage for conference participants (free of charge).

How to configure (wireless) internet access at ITC:

To make use of the wireless internet access, some configuration changes may be necessary. First of all, check the configuration of your network adapter. The adapter needs to obtain an IP address automatically. To do this open your "Network Connections" and follow the screens below.



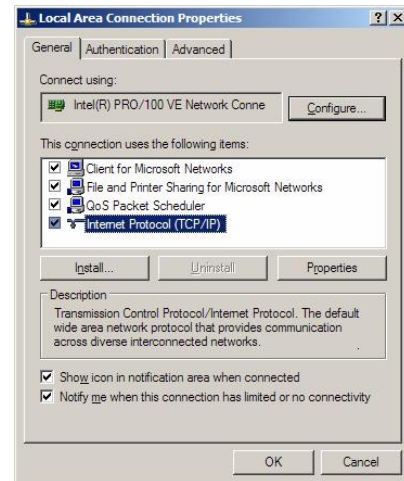
Select Internet Protocol (TCP/IP) and choose properties

Make sure your screen looks exactly as shown

Configure the wireless connection settings with the values given below:

SSID: ITCvlan2
Channel: 6 (if not automatic configured)

No WEP or WPA is required.



4.7. Information for speakers

A Speakers Desk and Technical Assistance Desk will be set up in room 0-137 and speakers can hand in their presentation as soon as possible. The presentation will be uploaded to the computer in the room in which you present.

A technician will be available to assist speakers with their presentations.

Hours of operation of Technical Assistance Desk are as follows:

Wednesday 13 June	08.00 - 17.00
Thursday 14 June	08.00 - 13.00
Friday 15 June	08.00 - 15.00

The Speakers of the Technical Sessions have a maximum of 15 - 20 min. for their presentation and discussion depending on the session. The Session Chair will give a warning to wrap things up.

4.8. Information for Poster sessions

- The poster stands have a size of 2 meters by 1 meter.
- Your poster can either be in portrait or landscape format. A typical size for posters is A0-format.
- The presenters will be provided with double sided adhesive tapes to fix their posters.
- Posters should be set up within half hour prior to, and removed within half hour after the Poster Session.

4.9. Attendance certificates

Attendance Certificates will be available from the Secretariat Desk upon request.

4.10. Travel Service

For any travel needs, such as booking of social tours or reconfirmation of flights please report to registration desk.

4.11. Illness

For any medical problems please report to the registration desk.

4.12. Safety

Please do not leave anything of value unattended. There is security present but do not provoke theft.

If you notice a fire you should immediately raise the alarm by breaking the glass of the nearest manual fire alarm call point or dial 260 at the nearest phone.

In case of fire or other emergency please stay calm and listen to the announcements and to staff indicating where you should go and what you should do. We have trained personnel present within the ITC building.

4.13. Smoking policy

Smoking is prohibited in the ITC building. However, a special smoking room can be found in 0-108 near the Restaurant. Smoking is also allowed outside the building (garden).

4.14. Mosque

A mosque is situated on the third floor.

4.15. Library

The library is situated on the third floor.

5. Detailed Programme of the Symposium

Every day the latest version of the programme will be posted in the reception area of the ITC building.

Tuesday 12 June

- 16.00 - 19.00 Registration
- 17.00 - 19.00 Ice Breaker Reception
Location: 0-142/146

Wednesday 13 June

- 08.00 -17.30 Registration
- 08.00 - 09.30 Coffee/Tea

09.30-09.45 Opening Plenary Session
Location: Auditorium

Welcome Speech: Prof. Dr. M. Hale, Vice Rector ITC
Welcome Speech: Prof. Dr. W. Kainz, President of ISPRS Technical Commission II
Welcome Speech: Prof. Dr. A. Stein, Conference Chair

09.45 – 10.30 Opening Keynote Speaker: Prof. Lotfi Zadeh, United States of America
Location: Auditorium
Paper: Granular Computing - Computing with Uncertain, Imprecise and Partially True Data

- 10.30 - 11.00 Coffee/Tea Break

11.00 - 12.40 S 1-1 Geo-Information Theory
Location: Auditorium
Chair: Prof. Andrew Frank, Austria

S. M. Zaffar Sadiq, M. Ghouse, Australia: Storing and Querying Spatially Varying Data Quality Information Using an Integrated Spatial RDBMS
W. Tegtmeier, The Netherlands: Identifying the Problem of Uncertainty Determination and Communication in Infrastructural Development
M. Vermeer, Finland: Aspects of Error Propagation in Modern Geodetic Networks
M. Salehi, Canada: Towards Specialized Integrity Constraints for Spatial Data Cubes Integrity Constraints
M.R. Delavar, Iran: Analytical Evaluation of Uncertainty Propagation in Seismic Assessment of Tehran Using GIS

11.00 - 12.40 S 2-1 Spatial Statistics
Location: 2-004/008
Chair: Prof. Wenzhong Shi, Hongkong

S. Lubomir, Czech Republic: Overall Uncertainty of Georeferencing and Classification
K. Kollo, Finland: A comparison of Geostatistics and Fuzzy Application for Digital Elevation Model
A. Wijaya, Germany: Geostatistical Texture Classification of Tropical Rainforests in Indonesia
S. Hegde, India: Supervised Land-Cover Classification-A Fuzzy Logic Technique
O. Omo-Irabor, United Kingdom: A Hybrid Image Classification Approach for the Systematic Analysis of Land Cover Changes in the Niger Delta Region

-
- 12.40 - 14.00 Lunch
- 14.00 - 14.40 Keynote Speaker: Prof. Wenzhong Shi, HongKong**
Location: Auditorium
Paper: An analysis of research development in spatial data quality and uncertainty modelling
- 14.45 - 15.45 S 1-2 Geo-Information Theory**
Location: Auditorium
Chair: Prof. Robert Jeansoulin, France
- S. Schade, Germany: Semantic Reference Systems Accounting for Uncertainty – A Requirements Analysis
M. Bakillah, Canada: A Conceptual Framework for Quality Assessment of Semantic Mapping between Ontologies
A. Stadler, Germany: Spatio-Semantic Coherence in the Integration of 3D City Models
- 14.45 - 15.45 S 2-2 Spatial Statistics**
Location: 2-004/008
Chair: Dr. David Rossiter, The Netherlands
- H. Demirel, Turkey: Predictive Mapping of Air Pollutants: A Spatial Approach
G. Navratil, Germany: Modeling Data Quality with Possibility-Distributions
Z. Jiang, The Netherlands: Optimization of Mobile Radioactivity Monitoring Networks
- 15.45 - 16.15 Coffee/Tea Break
- 16.15 - 18.00 Poster session**
Location: 0-142/146
Drinks will be served from 16.30 onwards
Convenor: Dr. Nick Hamm
- Yan Gao, Mexico: Optimised Image Segmentation and its Effect on Classification Accuracy
I. R. Karas, Turkey: 3D Spatial Data Modelling and Network Analysis for Indoors
M. O'Brien, Ireland: A Spatial Analysis of Psychiatric Patient Data Records
H. Demirel, Turkey: Adding Value to Car Navigation– Visual Approaches for Knowledge Discovery
B. Poovalinga Ganesh, India: Analysis of Uncertainties in Visualizing Remote Sensing and Spatial Data
Z. Akyurek, Turkey: Artificial Neural Networks as a Tool for Site Selection within GIS
M. Ouarzeddine, Algeria: Classification of Polarimetric SAR Images Based on Scattering Mechanisms
M. Seetha, India: Performance Analysis of Image Fusion Techniques by Image Segmentation
D.A. Sarafidis, Greece: Design of an ISO 19115 Compliant Profile for Documenting Spatial Datasets and Series for the Hellenic Cadastre
F. Fazlollahi, Iran: Evaluation of Land Use Changes Due to Water Sluicing of Taleghan Dam by Means of Remote Sensing Technology
A.A. Alesheikh, Iran: Developing a Spatio-Temporal Database for Moving Objects
M. Goudarzi, Iran: Differentiation of drylands cereal and Rangelands with the Assistance of Remote Sensing Techniques
S. Z. Hosseini, Iran: Investigation on the Potential of Digital Landsat ETM+ Data for Soil Salinity Mapping: Case Study: Northern Part of Lout Plain, Iran
N.P. Hegde, India: Integration of Cellular Automata and GIS
B. Malleswari, India: Kalman Filter for GPS Data Preprocessing

H. O. Kena, Ghana: Optimizing the Workflow in a Hybrid Production System of Analytical and Digital Production of Geodate Using Aerial Photographs.

Yan Gao, Mexico: Object-based Image Analysis for Mapping Land-cover in a Forest Area

N.P. Hegde, India: Quality Control In Large Spatial Databases

A. Nguyen (MoNRE), The Netherlands: Quality Management for DTM production

M. Sanderson, United Kingdom: Spatial Data Infrastructures: The Challenges Ahead

C. Tagg, United Kingdom: Spatial Data Quality Control: a SOA Approach

O.G. Djafar, Iran: Studying Bio-Environmental Potentials of Kusalán Area, Based on IUCN Criteria, Using RS and GIS technologies

K.P.G.W. Senadeera, Sri Lanka: The Evaluation of Morphometric Characteristics of Kotmale Reservoir Catchment Using GIS as a Tool, Sri Lanka

A. Comber, United Kingdom: The Identification of Data Primitives to Separate the Concepts and Semantics of Land Cover and Land Use: The Example of 'Forest'

J.M. Mäkelä, Finland: The impact of spatial data quality on decision making in a company

O. Špatenková, Finland: Use of Contingency Tables to Value Variables for Spatial Models

T. T. Pham, France: Uncertainty in Environmental Data Integration into 3D Urban Information System

C. de Runz, France: Using Fuzzy Logic to Manage Uncertain Multi-modal Data in an Archaeological GIS.

D. Chen, Canada: Calibrating Quantitative Errors on Categorical Maps Using the Contingency table

H. Asadi Haroni, Iran: Integrated Analysis of ASTER and Landsat ETM Data to Map Exploration Targets in the Muteh Gold-Mining Area, Iran

Thursday 14 June

08.00 -13.00 Registration

08.00 - 09.00 Coffee/Tea

09.00 - 09.40 **Keynote Speaker: Dr. Gerard Heuvelink**

Location: Auditorium

Paper: Error-aware GIS at work: real-world applications of the data uncertainty engine

09.45 - 10.45 **S 1-3 Geo-Information Theory**

Location: 2-004/008

Chair: Prof. Wolfgang Förstner, Germany

A. Frank, Austria: Assessing the Quality of Data with a Decision Model

T.H. Alemseged, The Netherlands: Spatial-Temporal Rainfall Mapping From Space: Setbacks And Strengths

Gutiérrez, France: Towards Real-Time Metadata for Sensor-Based Networks and Geographic Databases

09.45 - 10.45 **S 3-1 Applications**

Location: Auditorium

Chair: Dr. Rodolphe Devillers

P.A. Propastin, Germany: Increasing Accuracy In Analysis NDVI-Precipitation Relationship Through Scaling Down from Regional to Local Model

F. Hebel, Switzerland: Modelling DEM Data Uncertainties for Monte Carlo Simulations of Ice Sheet Models

A. Comber, United Kingdom: Uncertainty, Vagueness And Indiscernibility: The Impact Of Spatial Scale In Relation To The Landscape Elements

10.45 - 11.00 Coffee/Tea Break

11.00 - 13.00

S 2-3 Spatial Statistics

Location: 2-004/008

Chair: Dr. Gerard Heuvelink, The Netherlands

L. Morales, Chile: Comparison Interpolation Methods for Detection of Microclimatic Areas

R.L.Manzione, Brazil: Predictive Risk Mapping of Water Table Depths in a Brazilian Cerrado Area

D. Mostafa, K. Mohamed, Egypt: Estimating Spatial Variability of Soil Salinity Using Cokriging in Bahariya Oasis, Egypt

S. de Bruin, The Netherlands: Propagation of Positional Measurement Errors to Field Operations

M.A. Marinelli, Australia: Error Propagation Analysis Techniques Applied to Precision Agriculture and Environmental Models

M.R. Delavar, Iran: Quality Assessment in Spatial Clustering of Data Mining

11.00 - 13.00

S 4-1 Geo-Information Acquisition

Location: Auditorium

Chair: Dr. Hande Demirel

L. Bejaoui, France: Logical Consistency for Vague Spatio-Temporal Objects and Relations

T. Wehrmann, Germany: Analysis of the Quality of Collection 4 and 5 Vegetation Index Time Series from MODIS

A. Olteanu, France: A Multi-Criteria Fusion Approach for Geographical Data Matching

Y. Ge, China: Measuring the Quality of Samples in the Supervised Classification of Remotely Sensed Imagery

J. Triglav, Slovenia: Significance Analysis of Geolocation as a Function of Time

13.00 - 18.30

Social Tour

Location: Ootmarsum

18.30 – 22.00

Conference Dinner

Location: Restaurant "De Watermolen", Denekamp

Friday 15 June

08.00 -15.00 Registration

08.00 - 09.00 Coffee/Tea

09.00 - 09.40

Keynote speaker: Prof. Wolfgang Förstner, Germany

Location: Auditorium

Paper: Challenges in Modelling Uncertainty of GIS-Data

09.45 - 10.45

S 3-2 Applications

Location: Auditorium

Chair: Dr. Wietske Bijker, The Netherlands

M. de Vries, The Netherlands: Uncertainty in Spatial Planning: Causes, Implications and Possible Solutions

E.S. Podolskaya, Russia: Quality Assessment for Polygon Generalization

R. Jeansoulin, France: Quality-Aware and Metadata-Based Decision-Making Support for Environmental Health

09.45 - 10.45 S 4-2 Geo-Information Acquisition

Location: 2-004/008

Chair: Dr. Gary Hunter, Australia

M. Haixia, China: A Preliminary Study on Spatial Sampling Method for Topographic Map

X. Li, China: Quality Detection for Chinese Paper Chart Production Based on Knowledge Rules

09.45 - 10.45 S 5-1 Dissemination and Fitness for use

Location: 3-008

Chair: Dr. Luc Boerboom, The Netherlands

P. Watson, United Kingdom: Formal Languages for Expressing Data Consistency Rules and Implications for Reporting of Quality Metadata

A. Boin, Australia: What communicates quality to the spatial data consumer?

G. Schaab, Germany: Judging and Visualising the Quality of Spatio-temporal Data on the Kakamega-Nandi Forest Area in West Kenya

10.45 - 11.00 Coffee/Tea Break

11.00 - 12.20 S 3-3 Applications

Location: Auditorium

Chair: Prof. Michael Goodchild, United States of America

E. Dias, The Netherlands: Analysing and Aggregating Visitor Tracks in a Protected Area

M. Ghose and K. Ghose, India: Accuracy Assessment of Gis Data Using Simulated Spatial Error Modeling Techniques

T.H. Alemseged, The Netherlands: Uncertainty Issues in Hydrodynamic Flood Modelling

B.N. Guetti, United States of America: Prevention of Spatial Data Compression Quality Degradation

A. Kalantari Oskouei, Iran: Application of GML-based Geo-Metadata for Data Quality Information Management and Dissemination on the Web

11.00 - 12.20 S 4-3 Geo-Information Acquisition

Location: 3-008

Chair: Dr. Rolf De By, The Netherlands

R. Haller, Switzerland: Assessment of Height Accuracy of DEM for Species Habitat Analysis and Modelling.

P.A. Bordalo-Machado, Portugal: Extraction and Classification of Longline Fishing Trips from Vessel Monitoring Systems Data with Sequential Recording Gaps

O. Mudenda, Zambia: Spatial Analysis and Quality Management of Rainfall Data at the Zambia Meteorological Department.

O. Huisman, The Netherlands: The Nature Of Prisms: Exploring Data Quality And Vagueness In Dynamic Spatio-Temporal Constructs

11.00 - 12.20 S 5-2 Dissemination and Fitness for use

Location: 2-004/008

Chair: Dr. Lex Comber

R.M. Hendriksson, Finland: An Ontology-Driven Approach for Spatial Data Quality Evaluation

I.M. Sargent, United Kingdom: Data Quality in 3D: Gauging Quality Measures from Users' Requirements

M.A. Levesque, Canada: Managing the Risks of Data Misuse for Spatial Datacubes

A.M. Lechner, Australia: Development of a Framework to Assess the Impact of Scale Dependent Factors on the Classification of Landcover Maps

12.20 -13.30 Lunch

13.30 – 14.15 Keynote Speaker: Prof. Michael Goodchild, United States of America

Location: Auditorium

Paper: Towards User-Centric Description of Data Quality

14.15 – 14.30 Closing Session