

VISUALISATION AND ANIMATION OF UNDISCOVERED TOMB INTERIOR AT THE PRAGUE CASTLE

¹Karel Pavelka, ²Eva Štefanová, ³Martin Štroner

¹Head of Laboratory of Photogrammetry, Dept. Mapping and Cartography,
Tel.: +42024354951, Fax: +42024310774, E-mail: pavelka@fsv.cvut.cz

²Laboratory of Photogrammetry, Dept. Mapping and Cartography,
Tel.: +42024354905, Fax: +42024310774, E-mail: stefanova@fsv.cvut.cz

⁴ Dept. Special Geodesy, Tel.: +42024354735, Fax: +42024310774, E-mail: martin.stroner@fsv.cvut.cz
Czech Technical University in Prague, Faculty of Civil Engineering,
Thákurova 7, 166 09, Prague 6, Czech Republic

WG V/6 Visualisation and Animation

Key words: Photogrammetry, Cultural Heritage, Visualisation, Non-Metric

ABSTRACT

There are many tombs of Czech kings and princes at the Prague Castle. Some remains of the Czech princes and their wives from the Přemysl epoch (9th century-1306 A.D.) were transported to a new cathedral of St.Vitus (1373) by the emperor and Czech king Charles IV (1316-1378) in the Middle Ages. The tombstones were made in the well-known stone workshop of the Parléf family. During war in the year 1757 on wish of Fredrick II., the king of Prussia, some tombs were partly damaged and opened. Majority of the tombs were investigated in the 19th and 20th centuries. The tombs of Bořivoj II (1100-1124) and Břetislav II (1092-1100) were restored in 2002. Mixed stones with lime were discovered under the upper part of the tomb; the space for the remains was been found under this layer and under the floor level. In the case of tomb Břetislav II, the prince, the last unknown opening has been stated in the 19th century (a small lead tablet with the date was found). In the case of Bořivoj II, the prince, the tomb has not been opened for more than 600 years (from the Charles IV time). It is a single undiscovered Přemysl's tomb at the Prague Castle. This is because of large two stones (2x3m) shield the space over remains in the ground. The decision on status quo has been made after discussions. The reconnaissance using endoscopes has only been allowed. The 3D visualisation of the Bořivoj II tomb interior is the theme of this paper.

1. IMAGE DATA SET

In spring 2002, the sculptures on the tombs of Bořivoj II (1100-1124) and Břetislav II (1092-1100) were restored. Within this work, discovering of the space for the remains in both cases was planned. Mixed stones with lime were discovered under the sculptures; the lower part of the tomb located under the floor (cca 100x50x100cm) contains the remains of Czech princes. The decision on status quo has been made after discussions. The reconnaissance using endoscopes has only been allowed. Only the images from this device were used for possible creation of a 3D model. For a small camera input, the 2cm distance between two stones covering the tomb was prepared. Finally, two types of miniature cameras were used: the XL PRO VideoProbe (Everest-Vit) and the MTV-54C5P (Mintron) camera. In both cases, video sequences were obtained. From these video sequences single images were generated with resolution 768x575 pixels.

The VideoProbe XL PROTM is the most advanced remote viewing tool. It is especially designed to be easy to use and still offer unmatched imaging capabilities with options to suit virtually any applications. With number of accessories and options available, the XL PRO is ready to be adapted to any inspections situations, for example the using in archaeological purposes. The video bore scope consists of hand-piece buttons, joystick and on-

board file manager, high resolution camera for true colour images, external monitor and recording device with S-video inputs. The image sensor contains from 1/6" colour CCD camera with resolution of 480 HTV lines S-video (440000 pixels PAL). Exposure from interval 1/60th seconds up to 12 seconds can be used. The XL PROTM supports the use of interchangeable optical tips – the 3.9mm, 5mm, 6mm and 8mm diameter probe.

The second used camera was MTV-54C5P (Mintron Enterprise Co.,Ltd). This device uses interchangeable objectives (f=16,12,8,6,4,2.5mm). The objective with focal length 6mm was used for majority of acquired images. Camera is build in a tube; it contains 1/4-inch CCD Image Sensor (PAL, CCD total pixel 542 (H) x 586(V), electronic shutter,1/50~1/120,000 sec., scanning with 625 lines, 50 fields/sec). The camera MTV-54C5P is not a complex viewing tool; in this case, a special small halogen light source must be added. Video data were stored on digital video recorder.



Fig.1 MTV-54C5P (Mintron) CCD camera



Fig.2: XL PRO VideoProbe (Everest-Vit) bore scope

2. IMAGE PRE-PROCESSING

Both above mentioned cameras are non-metric. In this case, for using in photogrammetry, it is necessary to make a precise camera calibration. In special photogrammetric software, usually a special equation form for the image distortion is used.

If you need only simple photogrammetric processing, or it is not possible to make a correct camera calibration, the images without big distortion are necessary to use. However, in simple photogrammetric software (such as Photomodeler for intersection method), the images with corrected image distortion it is possible to use.

We have made only simple camera calibration to decrease image distortion. A special method based on image calibration and self-made software was designed. As a reference image, the calibration field composed from a set of regular small crosses on a paper sheet was prepared.

Equations (1.1) are completed with correction part for expression of image distortion (1.1):

$$x_b = x_d - R' \cdot (x_d - x_0) \quad (1.1)$$

$$y_b = y_d - R' \cdot (y_d - y_0)$$

$$R' = R'(x_d, y_d, r(x_d, y_d)) = k_0 \cdot r^2 + k_1 \cdot r^4 + k_2 \cdot r^6$$

$$r(x_d, y_d) = \sqrt{(x_d - x_0)^2 + (y_d - y_0)^2}$$

x_d, y_d are the coordinates with distortion, x_b, y_b are the coordinates without distortion, x_0, y_0 are the coordinates of principal point, k_0, k_1, k_2 are the coefficients of radial distortion. The collinear transformation for plane calibration field is used. In the equation (1.2), there are: X, Y calibration field points coordinates, x, y image coordinates and a, \dots, h transformation coefficients.

$$X = \frac{ax + by + c}{gx + hy + 1} \quad Y = \frac{dx + ey + f}{gx + hy + 1} \quad (1.2)$$

The equations of collinear transformation (1.2) are completed with correction part for expression of image distortion from (1.1):

$$x_d - R'(x_d - x_0) = \frac{ax + by + c}{gx + hy + 1} \quad (1.3)$$

$$y_d - R'(y_d - y_0) = \frac{dx + ey + f}{gx + hy + 1}$$

These equations are used in the software for distortion parameters calculation.





Fig.3 Simple radial image distortion suppressing (original image and processed image)

For the image distortion parameters computation, the software K3 has been prepared. As a data input, the set of true coordinates from calibration field and the set of image coordinates of crosses in text format are used.

The next step is the elimination of known radial distortion from images by using of another software. This software creates a new image without distortion. For every pixel of undistorted image, the identical point from distorted image is computed. This software uses inverse equation to equation (1.1):

$$x_d = x_b + R' \cdot (x_d - x_0) \quad (1.4)$$

$$y_d = y_b + R' \cdot (y_d - y_0)$$

x_d, y_d (the coordinates with distortion) are on both sides, the iteration is necessary to use : (1.5)

$$\begin{aligned} 0. \quad & {}^0x_d = x_b + R'(x_b, y_b) \cdot (x_b - x_0) \\ 1. \quad & {}^1x_d = x_b + R'({}^1x_d, {}^1y_d) \cdot ({}^1x_d - x_0) \\ & \vdots \\ n. \quad & {}^nx_d = x_b + R'({}^{n-1}x_d, {}^{n-1}y_d) \cdot ({}^{n-1}x_d - x_0) \\ 0. \quad & {}^0y_d = y_b + R'(x_b, y_b) \cdot (y_b - y_0) \\ 1. \quad & {}^1y_d = y_b + R'({}^1x_d, {}^1y_d) \cdot ({}^1y_d - y_0) \\ & \vdots \\ n. \quad & {}^ny_d = y_b + R'({}^{n-1}x_d, {}^{n-1}y_d) \cdot ({}^{n-1}y_d - y_0) \end{aligned}$$

The non-integer coordinates of image (in pixels) are the output of iteration. Nearest neighbour method or interpolation is used for determination of final RGB value in a new image. Finally, the images with suppressed image distortion are produced.

3. DATA PROCESSING

From video sequences, obtained by tomb discovering the suitable images have been selected. For a 3D model creating, the Photomodeler software was used. From the set of about 150 images only about 30 images were used as an input for Photomodeler software. It was not possible to make a complete model from all images; all the images were not suitable for intersection photogrammetry (the imaging was made without base knowledge of photogrammetry). For this reason, several partial models were created and the final model was made as a joining of model parts in CAD (MicroStation). Final model is an experiment for 3D visualisation of the tomb interior. The final 3D model is not very good, but it is the first project by using small digital cameras for archaeology.

4. CONCLUSION

Technology of close range photogrammetry by using non-metric devices for discovering of archaeological artefacts is discussed in this paper. In this project, small digital cameras and endoscopes as imaging devices were used. After simple image distortion repairing, the Photomodeler software for data processing and model creating was used. For the future, some recommendations for better processing is prepared:

- small camera with maximal resolution
- good illumination
- precise camera calibration or information about image distortion
- imaging of interior with knowledge of intersection photogrammetry (base, intersection angle, overlapping, continual imaging, number of images)
- if only information about lens distortion is known, the images with suppressed image distortion must be produced
- a good software for simple intersection photogrammetry
- model editing in CAD is necessary



Fig.4 The tomb Sculpture of Borivoj II.

REFERENCES

Pavelka,K., Using of Close Range Photogrammetry for Historical Buildings Documentation, Proceedings of Workshop CVUT Prague, 1999,pp.589-592

Kubelik,M.,Musílek,L.,Pavelka,K.,Pavlik,M: The Laboratory of Quantitative Method in Historic Monument Research at the CTU Prague, ISRP-8, International Physics Society, 8th Symposium on Radiation Physics, Prague, 6/2000, Abstracts Proceeding, pp.230-231, ISBN 80-01-02180-7

Pavelka, K., Using of Digital Photogrammetry, GIS and Internet Technology for Historical Buildings Documentation and Presentation, Istanbul, Conference TICT 2000, Bosphorus University,2000, Proceeding on CD

Čepek,A., Pavelka,K.: The Establishing of Historical Monuments Database in the Czech Republic, ISPRS Commission V, WG 6,International Workshop „Recreating the Past - Visualization and Animation of Cultural Heritage“, Ayutthaya, 26.2-1.3.2001, Thajsko, proceeding, ISSN 0256-1840, Vol.34,Part 5/W1, pp.153-158

Pavelka,K.: Complex Photogrammetric and Architectural Analysis of the Historic Monuments, CIPA International Symposium, Potsdam, TU Berlin, 9/2001, SRN, proceedings, ISSN 1682-1750, pp.475-479

Pavelka,K.: Visualisation and Animation of the Historic Town Centre of Telč, „Visualisation and Animation of Landscape“,ISPRS Commission V, WG V/6, Kunming, China, 2/2002, CD sborník Vol.XXX IV Part No.:5/W3, ISSN 1682-1777

Pavelka,K.: Using of Laser and Digital Camera Based Systems for 3d Object Documentation, Commission CIPA, WG 6, Korfu,Greece, 9/2002, proceeding of workshop

Pavelka,K., Dolanský,T.: Using of non-expensive 3D Scanning Instruments for cultural heritage documentation, Symposium CIPA, WG 6, Antalya, Turkey, 9/2003

Pavelka,K., Souček,P, Chromý,R...: PhotoPa - database of small Czech historical monuments Symposium CIPA, WG 6, Antalya, Turkey, 9/2003

Pavelka,K.,Štroner,M.: Simple radial image distortion suppressing in close range photogrammetry (in Czech), Stavebí obzor, ČVUT Praha, ISSN 1210-4027, in print, 2004



Fig.5 The tomb of Borivoj II.

REFERENCES FROM WEBSITES:

Laboratory of Photogrammetry, CTU Prague,2004, <http://lfgm.fsv.cvut.cz>

Geodesy and Cartography, CTU Prague Web Site: <http://gama.fsv.cvut.cz>

ACKNOWLEDGEMENTS

Grant Czech Grant Agency Nr.103/02/0357, 205/04/1398 and Czech Technical University Research Programme 210000007 and 210000019 sponsor this project.



Fig.6 Images from tomb made by MTV-54C5P (Mintron) CCD camera



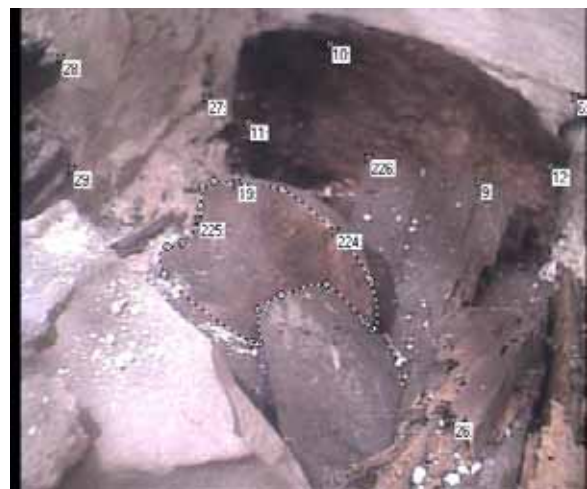
Fig.8 Images from tomb made by XL PRO VideoProbe



Fig.7 Detail of the tomb interior



Fig.9 Object points processing, Photomodeler



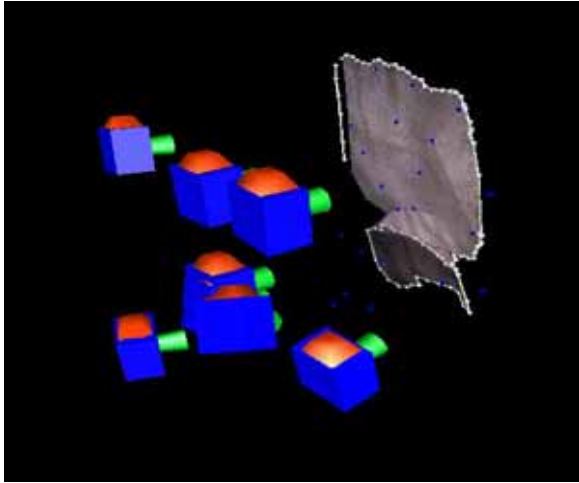


Fig.10 Image orientation using Photomodeler

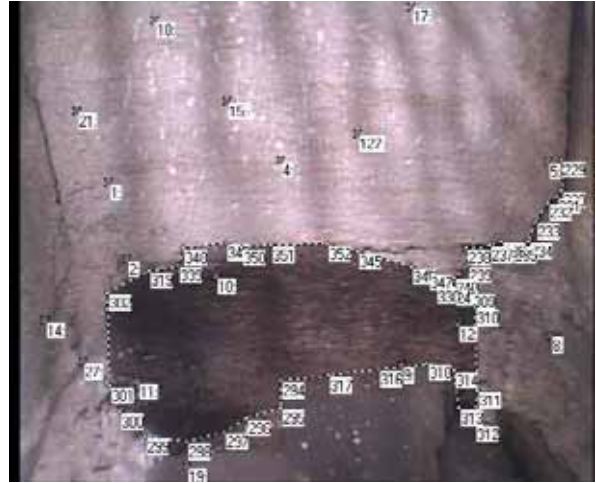


Fig.13 Object points processing, Photomodeler

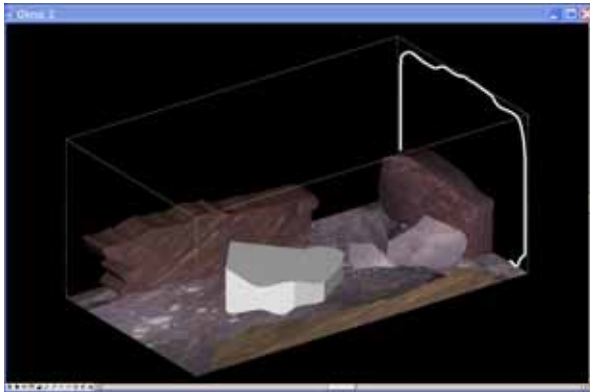


Fig.11 Partial model processing, MicroStation



Fig.14 Areas determination, Photomodeler

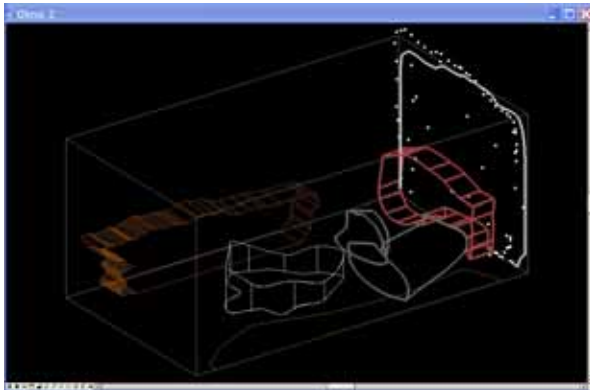


Fig.12 Partial model processing, MicroStation

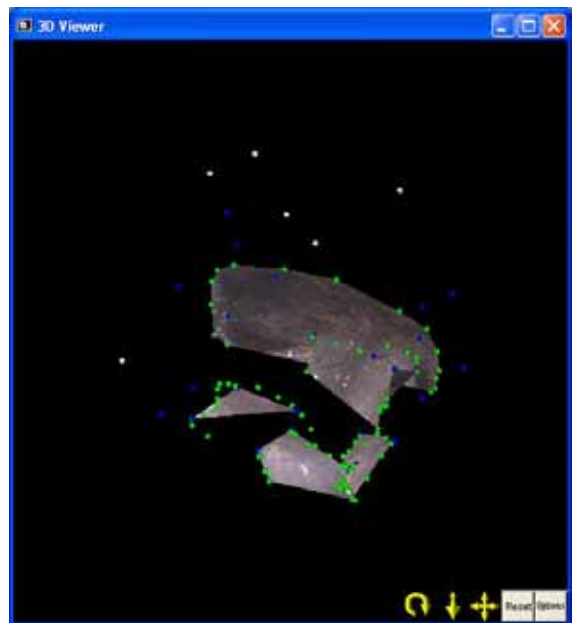


Fig.15 Partial visualisation, 3D Viewer