

THE INTERNATIONAL ARCHIVES OF THE PHOTOGRAMMETRY, REMOTE SENSING AND SPATIAL INFORMATION SCIENCES
 ARCHIVES INTERNATIONALES DE PHOTOGRAMMÉTRIE, DE TÉLÉDÉTECTION ET DE SCIENCES DE L'INFORMATION SPATIALE
 INTERNATIONALES ARCHIV FÜR PHOTOGRAMMETRIE, FERNERKUNDUNG UND RAUMBEZOGENE INFORMATIONSWISSENSCHAFTEN

VOLUME
 VOLUME
 BAND

XXXVI

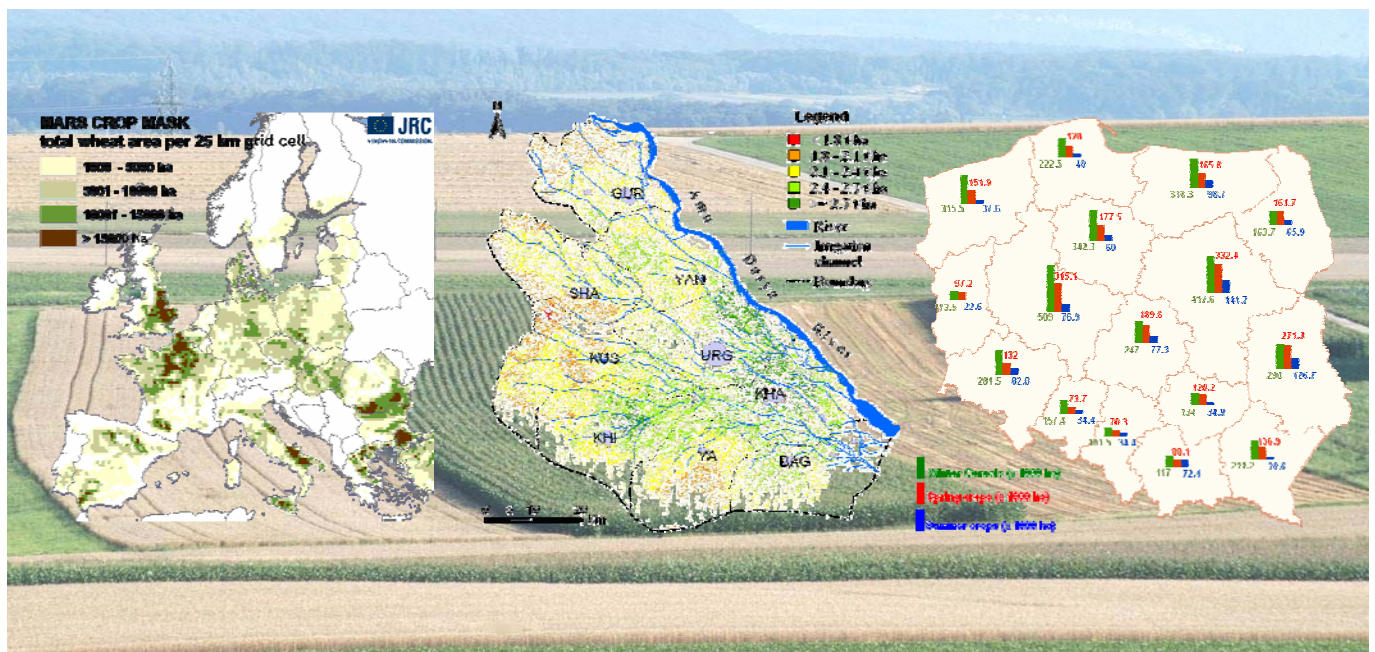
PART
 TOME
 TEIL

8/W48

ISPRS WG VIII/10 Workshop 2006

Remote Sensing Support to Crop Yield Forecast and Area Estimates

Stresa, Italy



This compilation © 2007 by the International Society for Photogrammetry and Remote Sensing. Reproduction of this volume or any parts thereof (excluding short quotations for the use in the preparation of reviews and technical and scientific papers) may be made only after obtaining the specific approval of the publisher. The papers appearing in this volume reflect the authors' opinions. Their inclusion in this publication does not necessarily constitute endorsement by the editors or by the publisher. Authors retain all rights to individual papers.

Published by

Joint Research Centre, 21027 Ispra (Va), Italy
ISPRS Working Group
- WG VIII/10

ISPRS Headquarters 2004-2008

c/o ORHAN ALTAN, ISPRS Secretary General
Division of Photogrammetry, Faculty of Civil Engineering
Istanbul Technical University
Ayazaga, 34469 Istanbul, Turkey
Phone: +90 212 285 38 10
FAX: +90 212 285 65 87
Email: oaltan@itu.edu.tr

ISPRS WEB Homepage: <http://www.isprs.org>

Available from

GITC bv
P.O.Box 112
8530 AC Lemmer
The Netherlands
Tel: +31 (0) 514 56 18 54
Fax: +31 (0) 514 56 38 98
E-mail: mailbox@gitc.nl
Website: www.gitc.nl

Workshop Organising Committee:

Antoine Royer, Joint Research Centre, Ispra, Italy
Bettina Baruth, Joint Research Centre, Ispra, Italy
Giampiero Genovese, Joint Research Centre, Italy

Foreword

The workshop was held from the 30th of November until the 1st of December in Stresa (Italy) jointly organized by the Joint Research Centre, Institute for the Protection and Security of the Citizen, Agriculture Unit, MARS STAT action and the ISPRS working group VIII/10.

Almost 80 participants from 25 countries came together under the workshop topic 'remote sensing support to crop yield forecast and area estimates' to review the main use of remote sensing information for yield forecast and area estimates at national or regional level. The two days workshop shared national, GEOLAND FP 6 project and JRC experiences in the use of satellite data in crop monitoring.

Reviewing the use of remote sensing for crop yield forecast, research in progress was presented as well as operational systems integrating remote sensing information for the yield forecasting using various sensors and approaches. The state of the art was presented for the estimation of crop area estimates from remote sensing as well as an assessment of remote sensing capabilities to achieve area estimates.

We would like to express our sincerest gratitude to all the authors, speakers and participants contributing to a lively and interesting workshop

Bettina Baruth

Giampiero Genovese

Antoine Royer

Table of Contents

Workshop Committees	I
Foreword	I
<i>R. Balaghi, B. Tychon, H. Eerens, M. Jlibene</i> Crop yield forecast with NOAA and SPOT-VEGETATION data in Morocco	1
<i>B. Baruth, L. Kucera</i> Crop masking – needs for the MARS crop yield forecasting system	3
<i>R. Benedetti, R. Catenaro, F. Piersimoni</i> Generalized software tools for crop area estimates	7
<i>R. Benedetti, M. Ciavattella, D. Filippini</i> EBLUP estimates by using remotely sensed data	11
<i>W. Bingfang</i> Introduction of China Crop Watch system with remote sensing	15
<i>P. Cayrol, H. Poilvè, V. Lefèvre, P. Duthil</i> Crop area estimates with MERIS data on Belgium and Poland	19
<i>G. Csornai, C. Wirnhardt, Z. Suba, G. Nador, L. Tikasz, L. Martinovich, A. Kocsis, G. Zelei, I. Laslo, E. Bognar</i> CROPMON: Hungarian crop production forecast by remote sensing	25
<i>Y. Curnel, R. Oger</i> Agrophenology indicators from remote sensing: state of the art	31
<i>F. Defourny, X. Blaes, P. Bogart</i> Respective contribution of yield and area estimates to the error in crop production forecasting	39
<i>P. C. Doraiswamy, B. Akhmedov, L. Beard, A. Stern, R. Mueller</i> Operational prediction of crop yields using MODIS data and products	45
<i>S. L. Ferreira, T. Newby, E. du Preez</i> Use of remote sensing in support of crop area estimates in South Africa	51
<i>D. C. Fontana, R. W. Melo, A. P. L. Wagner, E. Weber, A. Gusso</i> Use of remote sensing for crop yield and area estimates in the southern of Brazil	53
<i>S. Fritz, M. Massart, I. Savin, O. Leo</i> The use of MODIS data in southern Russia for crop acreage estimations and inter-comparison of results from various crop acreage estimation methods	59
<i>F. J. Gallego</i> Review of the main remote sensing methods for crop area estimates	65
<i>G. Genovese, S. Fritz, M. Bettio</i> A comparison and evaluation of performances among crop yield forecasting models based on remote sensing: Results from the GEOLAND Observatory of Food Monitoring	71

<i>R. Gommes</i> Non-parametric crop yield forecasting, a didactic case study for Zimbabwe	79
<i>R.S. Hooda, M. Yadav, M.H. Kalubarme</i> Wheat production estimation using remote sensing data - an indian experience	85
<i>A. Klisch, A. Royer, C. Lazar, B. Baruth, G. Genovese</i> Extraction of phenological parameters from temporally smoothed vegetation indices	91
<i>R. Mueller, R. Seffrin</i> New methods and satellites: A program update on the NASS cropland data layer and acreage program	97
<i>G. Narciso</i> Crop area estimates with Radarsat data – Feasibility study in the Toscana Region, Italy.	103
<i>O. Rojas</i> Operational maize yield model development and validation based on remote sensing and agro-meteorological data in Kenya	105
<i>A. Rosema, M. de Weirtdt, S. Foppes</i> Meteosat based agrometeorological monitoring and crop yield forecasting using the energy and water balance monitoring system	117
<i>G. R. Ruecker, Z. Shi, M. Mueller, C. Conrad, N. Ibragimov, J. P. A. Lamers, C. Martius, G. Strunz, S.W. Dech</i> Cotton yield estimation in Uzbekistan integrating MODIS, Landsat ETM+ and field data	123
<i>I. Savin</i> Crop yield prediction with SPOT VGT in Mediterranean and central Asian countries	130
<i>E. Ünal, A. Mermer, Ö. Urla, N. Ceylan, H. Yıldız, M. Aydoğdu</i> Pilot study on wheat area estimates in Turkey	135
<i>R. Vintila, F. Baret</i> An optimal temporal resolution of multispectral satellite data for field scale agriculture	139
Author Index	143
Keyword Index	145