

THE INTERNATIONAL ARCHIVES OF THE PHOTOGRAMMETRY, REMOTE SENSING AND SPATIAL INFORMATION SCIENCES
ARCHIVES INTERNATIONALES DE PHOTOGRAMMÉTRIE, DE TÉLÉDÉTECTION ET DE SCIENCES DE L'INFORMATION SPATIALE
INTERNATIONALES ARCHIV FÜR PHOTOGRAMMETRIE, FERNERKUNDUNG UND RAUMBEZOGENE INFORMATIONSWISSENSCHAFTEN

PROCEEDINGS

VOLUME
VOLUME
BAND

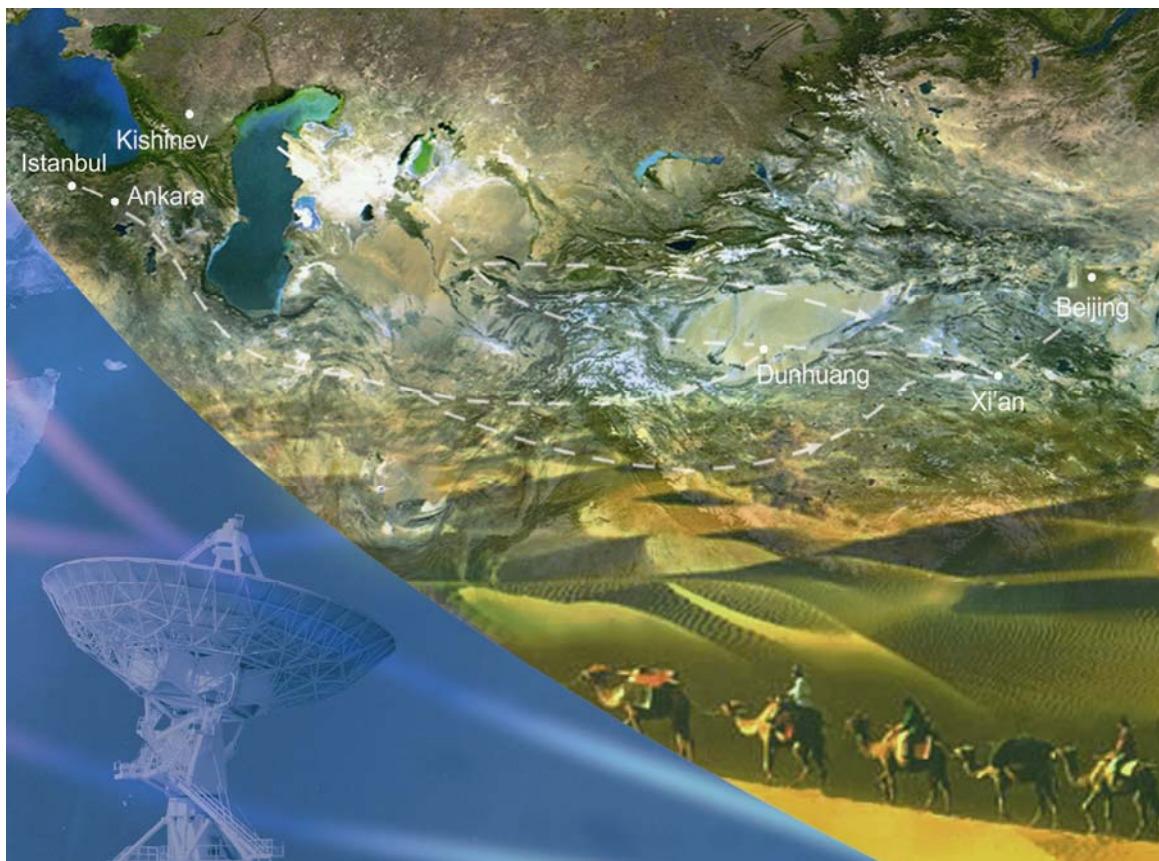
XXXVII

PART
TOME
TEIL

B7

COMMISSION
COMMISSION
KOMMISSION

VII



Edited by:
CHEN Jun, JIANG Jie, John van Genderen

This compilation © 2008 by the International Society for Photogrammetry and Remote Sensing. Reproduction of this volume or any parts thereof (excluding short quotations for the use in the preparation of reviews and technical and scientific papers) may be made only after obtaining the specific approval of the publisher. The papers appearing in this volume reflect the authors' opinions. Their inclusion in this publication does not necessarily constitute endorsement by the editors or by the publisher. Authors retain all rights to individual papers.

Copies of this book/CDROM are available from:

Reed Business - Geo (former GITC) by
P.O.Box 112
8530 AC Lemmer
The Netherlands
Tel: +31 (0) 514 56 18 54
Fax: +31 (0) 514 56 38 98
E-mail: geo@reedbusiness.nl
<http://www.reedbusiness-geo.nl>

Copyright 2008

ISPRS Council 2004-2008

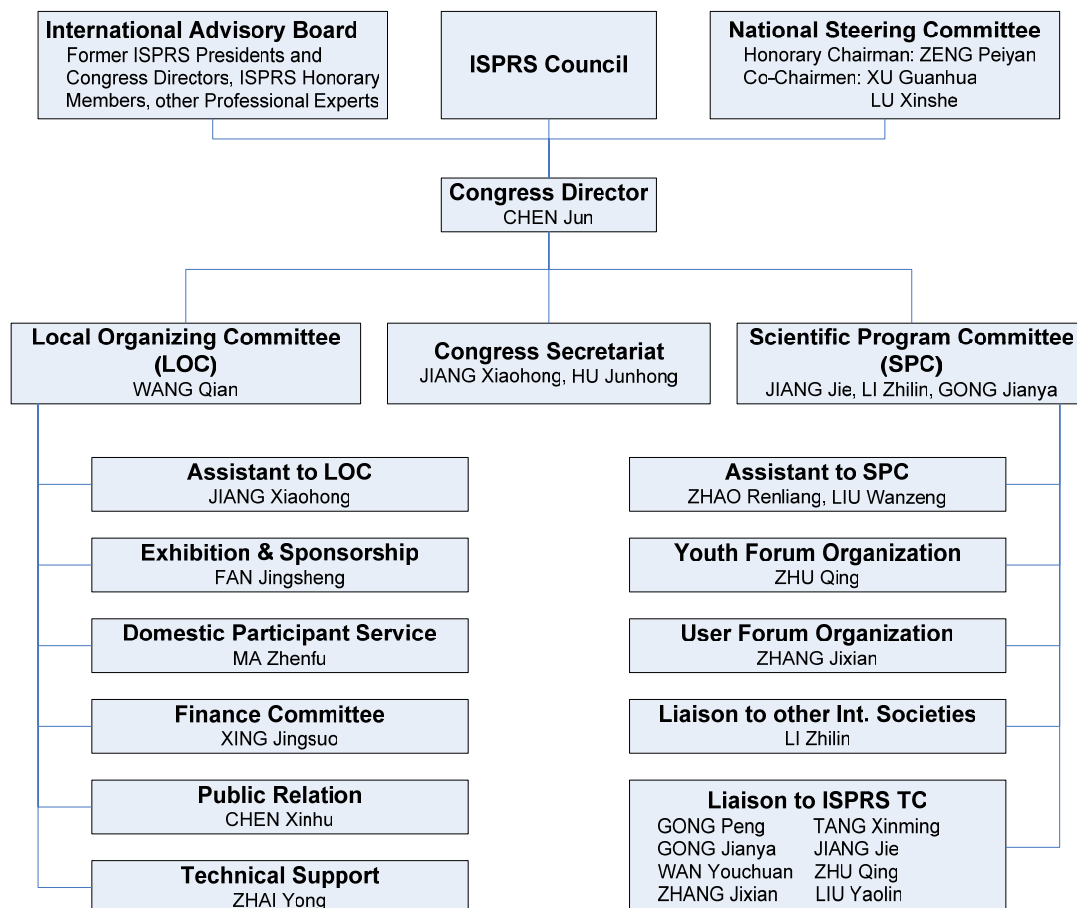
President	Ian Dowman	United Kingdom
Secretary General	Orhan Altan	Turkey
Congress Director	Chen Jun	P. R. China
First Vice President	John Trinder	Australia
Second Vice President	Emmanuel Baltsavias	Switzerland
Treasurer	Stanley Morain	USA

Technical Commission Presidents 2004-2008

Commission I	Alain Baudoin	France
Commission II	Wolfgang Kainz	Austria
Commission III	Wolfgang Foerstner	Germany
Commission IV	Shailesh Nayak	India
Commission V	Hans-Gerd Maas	Germany
Commission VI	Kohei Cho	Japan
Commission VII	John van Genderen	The Netherlands
Commission VIII	Ammatzia Peled	Israel

In cooperation with Working Group Chairpersons responsible for the reviewing of extended Abstracts and acceptance of contributions. Authors delivered camera ready manuscripts and selected the keywords.

Congress Organising Committee



Introduction

The decision by the General Council of ISPRS taken during the Istanbul Congress to set up a brand new Technical Commission VII on: "Thematic Processing, Modeling and Analysis of Remotely sensed Data" has turned out to be a very incisive and successful one. During the past four years, this new Technical Commission has organized so many conferences and workshops resulting in the publication of hundreds and hundreds of scientific and technical papers. Also, for this Beijing Congress, TC VII has received a large number of high level papers, which are included in these Proceedings.

WG VII/1 on Fundamental physics and modeling has produced many research results advancing our understanding of the basic bio physical and biochemical principles involved in remote sensing.

The WG VII/2 on "Information Extraction from SAR Data" has made some significant advances in various aspects of SAR Technology such as interferometry, polarimetric SAR and on extracting useful information from the increasing number of high resolution SAR satellites currently available. Their results are presented in these Proceedings.

The Proceedings do not report any great breakthroughs or developments in hyperspectral data processing or information extraction,(WG VII/3) over the last four year period, but this may change in the near future, with more airborne hyperspectral systems becoming commercially available and more satellites with many spectral bands being planned for the coming years.

In the published papers from WG VII/4 on Advanced Classification Techniques, it is clear that the advent of high resolution satellites such as Quickbird and Worldview from DIGITAL GLOBE, has drastically caused a shift in emphasis from pixel-based classification algorithms to texture-based and context-based classification methods.

Probably the fields in which the most research has been carried out over the past four years as exemplified by the many high quality papers in these fields included in these Proceedings, have been those of WG VII/5 and WG.VII/6, on "Processing of multi-temporal data and change detection" and "Remote Sensing Data Fusion" This is probably due to the direct and important applications that these methodologies have in areas such as Global Change studies, in Environmental Security fields, as well as for all forms of monitoring of the many changes occurring on our Planet, and because of the need to integrate data from an ever increasing number of data sources in order to extract relevant information for Decision Makers.

This Volume also includes some interesting papers from the work of WG VII/7 ON "Innovative problem solving methodologies for Less Developed Countries. These show that many researchers with low research budgets can develop very relevant methods to solve certain issues by using less financial resources but more brain resources!!

Of course, it is not much use developing a new algorithm or new technology without relating this to applications or problem solving. Hence there should always be a close link between the research and work carried out by TC VII and that done by TC VII on Remote Sensing Applications and Policies". Therefore the reader of this Volume, is also encouraged to read the companion Volume of TC VIII, as well as the Volume from the Inter-commission WG on "Derivation of global data, environmental change and sustainability indicators (Inter-commission VII/IV).

In conclusion, I would like to thank the Vice-President of our TC VII, Professor Andrew Skidmore, and all the authors of the papers in their support in producing this volume. Of course, the work of all the Working Group Chairs, their Co-Chairs and WG Secretaries and Regional Coordinators is also gratefully acknowledged for their help in soliciting the papers, reviewing and accepting them for this ISPRS Volume. To these, should be added the gratitude to the ISPRS Council and the Congress Programme Committee.

On a personal note, I would like to thank my organization, the ITC for its support over the past four years, allowing me to carry out the enjoyable task of TC VII President.

John van Genderen, President of ISPRS Technical Commission VII
28th May, 2008

Table of Contents

WG VII/1 Fundamental Physics and Modeling

Change Detection of Forest Crown Closure Using an Inverted Geometric-Optical Model and Scaling <i>Yuan Zeng, Michael E. Schaepman, Bingfang Wu, Sytze de Bruin, Jan G.P.W. Clevers</i>	1
Atmospheric Correction, Reflectance Calibration and BRDF Correction for ADS40 Image Data <i>U. Beisl, J. Telaar, M. v. Schönemark</i>	7
Spectro-Directional Chris/Proba Data over Two Swiss Test Sites for Improved Estimation of Biophysical and - Chemical Variables– Five Years of Activities <i>Mathias Kneubühler, Benjamin Koetz, Silvia Huber, Niklaus E. Zimmermann, Michael E. Schaepman</i>	13
Pre-Processing of Dual-View FIGOS Data: Towards Operational BRDF Retrieval <i>A.Hueni, J. Schopfer, D. Schläpfer, M. Kneubuehler, J.Nieke</i>	9
A Modeling Approach for Studying Forest Chlorophyll Content in Relation to Canopy Composition <i>J. Verrelst, M.E. Schaepman, J.G.P.W. Clevers</i>	25
Characterizing LAI Spatial and Temporal Variability Using a Wavelet Approach <i>X. Guo, B. C. Si</i>	31
Estimation of Atmospheric Temperature and Humidity Profiles from MODIS and Radiosond Data Using Artificial Neural Network <i>V. Akbari , J. Amini , M. R. Saradjian, M. Motagh</i>	35
Atmospheric Data Access for the Geospatial User Community (ADAGUC) <i>Nikée E. Groot John van de Vegte, Wim-Jan Som de Cerff, Gijsbertus H. J. van den Oord, Raymond Sluiter, Ian a van der Neutb, Maarten Plieger, Richard M. van Hees, Richard A.M. de Jeu, Michael E. Schaepman, Marc R. Hoogerwerf, Ben Domenico, Stefano Nativi, Olga V. Wilhelmi</i>	41
Geometrical and Structural Parameterization of Forest Canopy Radiative Transfer by LIDAR Measurements <i>L. Yáñez, L.Homolová, Z.Malenovský, M.Schaepman</i>	45
A New Method to Estimate Evapotranspiration from the Combination of MODIS Aqua and Terra Measurements <i>Jun Xiong, Bingfang Wu</i>	51
Accuracy Assessment of Linear Spectral Mixture Model (LSMM) in Estimating Vegetation Abundance in Mountain Area <i>WANG Tianxing ,CHEN Songlin ,MA Ya</i>	57

WG VII/2 Information Extraction from SAR Data

Radar Interferometry for Ground Subsidence Monitoring Using ALOS Palsar Data <i>A.H. Ng, H. Chang, L. Ge, C. Rizos, M. Omura</i>	67
Soil Moisture Estimation from Radarsat -1, ASAR and PALSAR Data in Agricultural Fields of Menemen Plane of Western Turkey <i>Fusun Balik Sanli, Yusuf Kurucu, Mustafa Tolga Esetlili, Saygın Abdikan</i>	75
Study on GPS Station'S Zenith Delay to Mitigate the InSAR Atmosphere Effect <i>LI Tao, ZAHNG Shiyu, Zhang Shuangcheng, LIU Jingnan, XIA Ye</i>	83
Rduction of Atmospheric Water Vapour Effects on Envisat ASAR Interferograms Using MERIS near IR Measurements <i>Zhenhong Li</i>	87
Weighted Pyramid Linking for Segmentation of Fully-Polarimetric SAR Data <i>Ronny H"ansch, Olaf Hellwich</i>	95
Mapping Ground Deformation by Radar Interferometry Based on Permanent-Scatterer Network: Algorithm and Testing Results	

<i>Guoxiang Liu, S. M. Buckley, Xiaoli Ding, Qiang Chen, Xiaojun Luo</i>	101
Deformation Monitoring by Means of SAR Interferometry in the North-Bohemian Area <i>B. Knechtlová, I. Hlaváčová</i>	107
Study on a Matching Method of Airborne SAR Images <i>FANHong-dong, DENG Ka-zhong</i>	111
Detecting Ground Settlement of Shanghai Using Interferometric Synthetic Aperture Radar (InSAR) Techniques <i>P. Damoah-Afari, X.L. Ding, Z. Lu, Z.W. Li</i>	117
Analysis of Uncertain Factors in Automatic Extraction of Roads from SAR Imagery <i>Feng Xie, Yi Lin, Yingying Chen</i>	125
Study on Relation between InSAR Coherence and Soil Moisture <i>Ting Zhang, Qiming Zeng Ying Li, Yun Xiang</i>	131
Evaluation of the Geometric Accuracy of Terrasar-X <i>T. Nonaka, Y. Ishizuka, N. Yamane, T. Shibayama, S. Takagishi, T. Sasagawa</i>	135
A Novel Edge-Detection Based Segmentation Algorithm for Polarimetric SAR Images <i>Jie Yang, Ran Yang, Shigao Li, S. Shoujing Yin, Qianqing Qin</i>	141
SAR Image Registration Using a New Approach Based on the Generalized Hough Transform <i>C. Palmann, S. Mavromatis, J. Sequeira</i>	145
Traffic Parameter Estimation Using Terrasar-X Data <i>D. Weihing, S. Suchandt, S. Hinz, H. Runge, R. Bamler</i>	153
A Quaternary Prototype for Spatiotemporal Analysis of Permanent Scatter Interferometry <i>J. Wu, J. Cai, C. Hu, F. Xiao, C. Liu</i>	157
Research on the Linear and Nonlinear Methods of Correcting Baseline Errors on SAR Interferograms <i>Shiyu ZHANG, Tao LI, Jingnan LIU, Ye XIA</i>	161
Water Body Information Extraction from High Resolution Airborne SAR Image with Technique of Imaging in Different Directions and Object-Oriented <i>XIE Chunxi, ZHANG Jixian, HUANG Guoman, ZHAO Zheng, WANG Jiao</i>	165
Estimation of the Accuracy of the SRTM Terrain Model on the Area of Poland <i>A. K. Karwel, I. Ewiak</i>	169
Subsidence Measurement with PS-INSAR Techniques in Shanghai Urban <i>Lijun Lu, Mingsheng Liao</i>	173
Radar Interferometry for Safe Coal Mining in China <i>L. Ge, H.-C. Chang, A. H. Ng, C. Rizos</i>	179
Alos Palsar Data for Tropical Forest Interpretation and Mapping <i>M. Mahmudur Rahman, Josaphat Tetuko Sri Sumantyo</i>	185
Environmental Impact Assessment of Mining Related Dewatering Activities Using Integrated InSAR, Optical Remote Sensing and Pumping Data <i>Tsehaie Woldai, Jim Taranik</i>	191
The Effect of Speckle Reduction on Coherence Estimation and Interferometric Phase of InSAR <i>Y. L. Chen, C. Huang, X. L. Ding, Z. W. Li, L. Zhang</i>	199
Accuracy Evaluation of DEM Derived by Terrasar-X Data in the Himalayan Region <i>N. Yamane, K. Fujita, T. Nonaka, T. Shibayama, and S. Takagishi</i>	203
ASAR Image Target Recognition Based on the Combined Wavelet Transformation <i>HE Hui, PENG Wanglu</i>	209

WG VII/3 Information Extraction from Hyperspectral Data

Improving the Performance of Hyperspectral Pushbroom Imaging Spectrometers for Specific Science Applications <i>F. Dell'Endice</i>	215
A New Archaeological Remote Sensing Technology <i>Tan Kelong, Wan Yuqing, Yang Lin, Zhou Riping, Cao Wei, Mao Yaobao</i>	221
A 4D Morphological Scale Space Representation for Hyperspectral Imagery <i>Konstantinos Karantzalos</i>	225
Correlation Analysis between Indices of Tree Leaf Spectral Reflectance and Chlorophyll Content <i>Jan-Chang Chen, Chaur-Tzuhn Chen</i>	231
A Novel Combined Optical Method for Objectively Map Soil in a Near Real Time Domain <i>E. Ben-Dor, K. Carmina, D. Heller, S. Chudnovsky</i>	239
Detecting Sub-Surface Soil Disturbance Using Hyperspectral First Derivative Band Ratios of Associated Vegetation Stress <i>D. C. White, M. Williams, S. L. Barr</i>	243
Some Issues Related with Sub-Pixel Classification Using Hyperion Data <i>A. KUMAR, H. A. MIN</i>	249
An Exploratory Analysis of in Situ Hyperspectral Data for Broadleaf Species Recognition <i>R. PU</i>	255
Study on Spectral Features of Soil Organic Matter <i>HE Ting, WANG Jing, LIN Zongjian, CHENG Ye</i>	261
An Cbrsir Features Compression Approach Based on DPSO and SVM <i>Ning Xiaogang, Zhang Yonghong</i>	269
Corn Fpar Estimating With Near and Shortwave Infrared Bands of Hyperspectral Data Based on PCA <i>F. Yang, B. Zhang, Z. M. Wang, K. S. Song, D. W. Liu, H. J. Liu, J. Du, H. T. Duan</i>	273
A New Band Selection Algorithm for Hyperspectral Data Based on Fractal Dimension <i>Hongjun Su, Yehua Sheng, Peijun Du</i>	279
Hyperspectral Image Feature Extraction Based on Generalized Discriminant Analysis <i>Guopeng Yang, Xuchu Yu, Xin Zhou</i>	285
Spectroradiometric Measurements of Tree Species in the Caspian Forests of Iran <i>M. Abbasi, M.E. Schaepman, A. Darvishsefat, H.M. Bartholomeus, M.R. Marvi Mohajer, H. Sobhani</i>	291
A Dimensionality Reduction Algorithm of Hyper Spectral Image Based on Fract Analysis <i>SU Junying, Shu Ning</i>	297
Efficient Detection of Anomalies in Hyperspectral Images <i>S. R. Soofbaf, M. J. ValadanZoej, H. Fahimnejad, H. Ashoori</i>	303
Hyperspectral Data Analysis of N-Fertilisation Effects on Winter Wheat: a Case Study of Huimin County, North China Plain <i>M. L. Gnyp, F. Li; S.D. Hennig, W. Koppe, L. Jia; X. Chen, F. Zhang; R. Laudien, G. Bareth</i>	309
New Quality Representation for Hyperspectral Images <i>Emmanuel Christophe, Dominique L'éger, Corinne Mailhes</i>	315
The Development of Wide Field of View Hyperspectral Imager <i>HE Zhiping, XU Weiming, JIA Jianjun, SHU Rong, WANG Jianyu</i>	321
Remote Mine Site Rehabilitation Monitoring Using Airborne Hyperspectral Imaging and Landscape Function Analysis (LFA) <i>I. C. Lau, R. D. Hewson, C. C. H. ong, D. J. Tongway</i>	325
Accuracy Evaluation on Fuzzy Set Classification Method for High Spatial Resolution Remote Sensing Data <i>Shuhe ZHAO, Shijie XIE, Xinming ZHANG, Chunhong WANG, Wei TANG</i>	331

ICA Based Model for Extracting Information of Contaminative Soil from Hyperion Data <i>Xiaodong Wang, Xiangnan Liu, Lele Su, Nan Jiang</i>	335
Dimensional Reduction in Hyperspectral Images by Danger theory Based Artificial Immune System <i>Lele Su, Xiangnan Liu, Xiaodong Wang, Nan Jiang</i>	341
Application of Fuzzy Reasoning To Assessment of Crop Stress Level Based on MODIS Data: a Focus on Heavy Metal Pollution <i>Xiangnan Liu, Nan Jiang, Xiaodong Wang, Chenxia Han</i>	347
Acquiring Reflection Coefficients using Hyperspectral Video Imagery <i>Wieslaw Debski, Piotr Walczykowski</i>	353
Atmospheric Correction Iterative Method for High Resolution Aerospace Imaging Spectrometers <i>Alessandro Barducci, Donatella Guzzi, Paolo Marconi, Ivan Pippi</i>	357
Spaceflight Hyperion Data Radiation Calibration Preliminary Study <i>Shufang Tian, Jianping Chen, Ming Jiang</i>	363
Discriminating Species Using Hyperspectral Indices at Leaf and Canopy Scales <i>M.A Cho, I Sobhan, A.K. Skidmore, J. de Leeuw T.</i>	369
Analysis of Spaceborne Hyperion Imagery for the Estimation of Fractional Cover of Rangeland Ecosystems <i>Jinkai Zhang, Karl Staenz, Peter R. Eddy, Nadia Rochdi, Dave Rolfson, Anne M. Smith</i>	377
Unsupervised Information Extraction Using Absorption Line in Hyperion Images <i>Y. Rezaei, M.R. Mobasher, M.J. Valadan Zoj</i>	383
An Improved Endmember Extraction Algorithm by Inversing Linear Mixing Model <i>Li Shanshan, TIAN Qingjiu</i>	389
A Genetic Algorithm Based Wrapper Feature Selection Method for Classification of Hyperspectral Images Using Support Vector Machine <i>Li Zhuo, Jing Zheng, Fang Wang, Xia Li, Bin Ai, Junping Qian</i>	397
Hyperspectral Reflectance and their Relationships With Spring Wheat Growth Status Characteristics in Rained Agriculture Areas of Loess Plateau <i>Wang Xiaoping, Guo Ni, Zhang Kai, Zhao Hong</i>	403
Vegetation Endmember Extraction in Hyperion Images <i>M. Heidari Mozaffar, M.J. Valadan Zoj, M.R. Sahebi, Y. Rezaei</i>	409
Using a Laboratorial Hyperspectral Image for the Evaluation of Feature Reduction Methods for the Classification of High Dimensional Data <i>Yasser Maghsoudi, Jung-il Shin, Sun-hwa Kim and Kyu-sung Lee</i>	413
Agriculture Drought and Forest Fire Monitoring in Chongqing City With MODIS and Meteorological Observations <i>Hongrui Zhao Zhongshi Tang, Bin Yang and Ming Zhao</i>	421
A Fast Method for Objects Detection and Recognition on High Resolution Imagery Based on Geostatistical and Local Cluster Analysis <i>Li Yunfan, Yao Chunjing, Ma Hongchao</i>	429
Extraction of Foliar Biochemistry from Hyperspectral Data Using Wavelet Decomposition. <i>G. A. Blackburn, J. G. Ferwerda</i>	433
Mapping of Lithological Units of Çankiri Basin, Central Anatolia, Turkey With Proba Chris Hyperspectral Data <i>H. Özen, N. Musaoğlu, O. Tüysüz</i>	437
Improving Hyperspectral Classification Based on Wavelet Decomposition <i>O. Almog, M. Shoshany, V. Alchanatis, F. Qizel</i>	443

A Novel Band Selection Method for Hyperspectral Data Analysis <i>B.Mojaradi , H.Emami , M.Varshosaz , S.Jamali</i>	447
The Temporal Changing Information Extraction on Spectral Reflectance and Growth Parameters of Typical Crops <i>Xiao Yueting, Song Jinling, Wang Jindi</i>	455
Identifying Hyperspectral Characters of Wetland Species Using In-Situ Data <i>Y. SUN,X. Liu , Y. Wu, C. Liao</i>	459
Extraction of Karst Rocky Desertification Information from EO-1 Hyperion Data <i>Y. M. YUE, K. L. WANG, Z. C. CHEN, Y. Z. YU</i>	467
Estimation of Leaf Area Index and Chlorophyll for a Mediterranean Grassland Using Hyperspectral Data <i>R. Darvishzadeh, A. Skidmore, M. Schlerf, C. Atzberger,ITALY; F. Corsi, M. Cho</i>	471

WG VII/4 Advanced Classification Techniques

Contribution to the Assessment of Segmentation Quality for Remote Sensing Applications <i>Uwe WEIDNER</i>	479
An Artificial Immune Algorithm for Spectrum Recognition of Hyperspectral Data <i>Yanfei Zhong, Liangpei Zhang, Pingxiang Li, Xin Huang</i>	485
Region Based Segmentation of Quickbird Imagery through Fuzzy Integration <i>B. Wuest, Y. Zhang</i>	491
Texture Classification of Aerial Image Based on Bayesian Network Augmented Naive Bayes <i>YU Xin, ZHENG Zhaobao, ZHANG Haitao, YE Zhiwei</i>	497
Performance Evaluation for Scene Matching Algorithms by SVM <i>Zhaohui Yang, Yingying Chen, Shaoming Zhang</i>	503
Organization and Representation of Objects in Multi-Source Remote Sensing Image Classification <i>Guifeng Zhang, Zhaocong Wu, lina Yi</i>	509
Object Oriented Classification: Case Studies Using Different Image Types With Different Spatial Resolutions <i>D.A. Bruce</i>	515
Application of High Resolution Satellite Imagery for Wetlands Cover Classification Using Object-Oriented Method <i>Huan Yu, Shu-Qing Zhang</i>	521
Class Based Ratioing Effect on Sub-Pixel Single Land Cover Automatic Mapping <i>Anil Kumar, Suresh Saggarr</i>	527
Analysis of Land Use Change in Guangzhou City Based on TM (1997–2003) <i>Caige Sun, Kaiwen Zhong, Fenglei Fan, Xie Liang</i>	533
Effects of JPEG2000 and SPIHT Compression on Image Classification <i>Zhai Liang, Tang Xinming, Zhang Guo, Wu Xiaoliang</i>	541
Studies of Ocean'S Scattering Properties Based on AIRSAR Data <i>Wang Wenguang, Sun Jinping, Wang Jun, Hu Rui</i>	545
Mapping and Updating Maps in Dense Urban Regions Using High Resolution Digital Airborne Imagery, Surface Models and Object-Based Classification <i>M. Oczipka, T. Bucher, A. Trosset</i>	551
Analysis of the Transferability of Support Vector Machines for Vegetation Classification <i>Henny Mills</i>	557
An Adaptive Clustering Algorithm Based on the Possibility Clustering and ISODATA for Multispectral Image Classification <i>Wenping Liu; Chih-Cheng Hung, Bor-Chen Kuo, Tommy Coleman</i>	565

Imagery Texture Analysis Based on Multi-Feature Fractal Dimension <i>Jingxue Wang, Weidong Song, Feng Gao</i>	569
Use of Neural Networks for Land Cover Classification from Remotely Sensed Imagery <i>L. Zhou, X. Yang</i>	575
Merging Random Forest Classification with an Object-Oriented Approach for Analysis of Agricultural Lands <i>J. D. Watts, R. L. Lawrence</i>	579
Study on the Distribution Changes of Urban Heat Island Based on Heat-Greenness Feature Space <i>Peng-fei Wu, Xue-xia Zhang</i>	583
Nearest Convex Hull Classifiers for Remote Sensing Classification <i>Jianjun Qing, Hong Huo, Tao Fang</i>	589
Generation of Knowledge Rules on the Extraction of Coastal Wetland <i>ZHANG Yue, RUAN Renzong, DING Xianrong, WANG Weiping, XU Hui, GE Xiaoping, ZHANG Xiaoxiang, XU Jun</i>	595
Identifying the Number of Clusters and Obtaining Optimal Classification Result <i>H. Zhu</i>	601
A Integrated Classifier for Large Regional-Scale Land-Cover Classifying <i>Chengfeng LUO, Zhengjun Liu, Wenli Meng</i>	607
Edge Fining Algorithm of Texture Classification for High Resolution Remote Sensing Images <i>Shuqiang LU</i>	613
A Method for SAR Speckle Reduction Based on Partial Differential Equation <i>He Yu, Xu Qing, Xing Shuai</i>	617
The Study on Linear Mixed Parcel Unmixing for Classification <i>J. Zhang, Y. Pan, L. Li*, C. Yi, G. Song</i>	621
Effectiveness of Boosting Algorithms in Forest Fire Classification <i>C. Özkan, F. Sunar, S. Berberoğlu, C. Dönmez</i>	625
An Agent-Based Algorithm for Forest Fire Detection <i>S. Movaghati, F. Samadzadegan, A. Azizi</i>	631
A Comparison of Spectral Mixture Analysis Methods for Urban Landscape Using Landsat ETM+ Data: Los Angeles, Ca <i>Xianfeng Chen, Lin Li</i>	635
Analysis of the Effectiveness of Spectral Mixture Analysis and Markov Random Field Based Super Resolution Mapping Over an Urban Environment <i>D. R. Welikanna, V. Tolpekin, Yogesh Kant</i>	641
High-Resolution Satellite Imagery Analysis Based on Objected-Oriented Technique— the Control Zone Exaction in “Four Mountain” Region of Chongqing for Example <i>Luo Lingjun, Hu yan, He Zong</i>	651
Cooperative Interpretation of Land Use <i>Yanfang LIU, Dan CHEN</i>	657
Fully Constrained Oblique Projection Approach to Mixed Pixel Linear Unmixing <i>Mingyi He, Shaohui Mei</i>	661
Wetland Mapping Using Subpixel Analysis and Decision Tree Classification in the Yellow River Delta Area <i>W. Wei, X. Zhang, X. Chen, J. Tang, M. Jiang</i>	667
Land Use Characterization Using Landcover Objects from High Resolution Satellite Image <i>Shiro Ochi</i>	671
A Novel Remotely Sensed Data Classification Method—MS-SVMs <i>Dengkui Mo, Hui Lin, Jiping Li, Zhuo Zang, Xiaopo Xue, Yujiu Xiong</i>	673

Expert System Based on Object-Oriented Approach for Land Cover Mapping <i>Zhang Lei, Zhou Yueming, Wu Bingfang</i>	679
Evaluation of Capabilities of Fuzzy Logic Classification of Different Kind of Data <i>D. Emmolo, P. Orlando, B. Villa</i>	685
Performance of TDVI in Urban Land Use/Cover Classification for Quality of Place Measurement <i>A. Ozbakir, A.Bannari</i>	691
Intra-Urban Land Cover Classification from High-Resolution Images Using the C4.5 Algorithm <i>C. M. D. Pinho, F. C. Silva, L. M. C. Fonseca, A. M. V. Monteiro</i>	695
Automatic Classification Methods of High-Resolution Satellite Images: the Principal Component Analysis Applied To the Sample Training Set <i>A. Bernardini, E. S. Malinverni, P. Zingaretti, A. Mancini</i>	701
Improving Classification Accuracy via Contextual Feature Ranking in High Spatial Resolution Satellite Imagery <i>B. Mojaradi, H. Ashoori, M. Mirghasempour</i>	707
Classification of MODIS Spectral and Angular Signatures Using Decision Tree Algorithm <i>Z. Jiao, C. B. Schaaf, A. H. Strahler, F. Gao C. Woodcock, X. Li, J. Wang, J. Liu, B. Tan</i>	713
Local Spatial Statistics for Remotely Sensed Image Classification of Mangrove <i>LIU Zhi-gang; LI Jing; LIM Boon-leong, SENG Chung-yueh, INBARAJ Suppiah, SUN Zhichao</i>	719
Advances in Object-Based Image Classification <i>P. Aplin, G.M. Smith</i>	725

WG VII/5 Processing of Multi-Temporal Data and Change Detection

Modelling Spatio-Temporal Pattern of Landuse Change Using Multitemporal Remotely Sensed Imagery <i>Qiming Zhou, Baolin Li; and Bo Sun</i>	729
Monitoring Agricultural Activities Using Multi-Temporal ASAR ENVISAT Data <i>S.M. Tavakkoli Sabour, P. Lohmann, U. Soergel</i>	735
Genetic Algorithm Optimized Neutral Network Classification and Overlapping Pixel Change Detection Based on Remote Sensing for Urban Sprawl: a Case Study in Jiading District of Shanghai <i>X. Zhang, X.H. Tong, M.L. Liu</i>	743
Improving 2D Change Detection by Using Available 3D Data <i>C.J. van der Sande, M. Zanoni, B.G.H. Gorte</i>	749
A Review of Multi-Temporal Remote Sensing Data Change Detection Algorithms <i>Gong Jianya, Sui Haigang, Ma Guorui, Zhou Qiming</i>	757
Vegetation Dynamical Patterns Related To Rainfall Variability Analysed With Wavelet Coherency for Southern Africa <i>E. Swinnen</i>	763
Free Open Source Ilwis 3.4 for Efficient thematic Studies in Alpine Areas <i>E.S. Malinverni</i>	769
Temperate Forest Height Estimation Performance Using Icesat GLAS Data from Different Observation Periods <i>Yong Pang Michael Lefsky, Guoqing Sun, Mary Ellen Miller, Zengyuan Li</i>	777
Auto-Detection of Heterogeneous Areas in Radiometric Normalization <i>Jun Pan, Mi Wang, Deren Li</i>	783
Data Mining Techniques for Land Use Land Cover Classification Using Multi-Temporal Awifs Data <i>Sreenivas Kandrika, Roy</i>	787

Remote Sensing Monitoring of Environmental Changes in the Danube Delta and the Coast Area of the Black Sea	
<i>I. Noaje, L. Turdeanu</i>	791
Robust Change Detection by Integrating Object-Specific Features	
<i>Chunlei Huo, Keming Chen, Zhixin Zhou, Hanqing Lu, Jian Cheng</i>	797
Hypertemporal Image Analysis for Crop Mapping and Change Detection	
<i>C.A. de Bie, Mobushir R.Khan, A.G.Toxopeus, V.Venus, A.K.Skidmore</i>	803
Dynamic Change Monitoring of Forest Resource by Using Remote Sensing and Markov Process in Loess Plateau of China	
<i>Qiao Yuliang, Zhao Shangmin, Liu Binyan</i>	815
Remote Sensing Analysis on Dynamic Changes of the Soil Salinization in the Upper Stream of the Tarim River	
<i>Z. L. Yan, Q. Huang, F. Gao, P. Shen, J. S. Kuang, B. Hang, L. Shi</i>	821
Research on Change Detection of Outdated Map Road Feature Based on Updated High-Resolution Remote Sensing Image	
<i>Ming DONG, Haitao ZHANG</i>	827
Monitoring the Source of Trans-National Dust Storms in North East Asia	
<i>L.Ochirkhuyag, R.Tsolmon</i>	835
A Change Detection Method With High Resolution Images Based on Polygon Automatic Validating	
<i>Xiaokun Zhu, Haitao Zhang, Guofeng Pang</i>	841
Vegetation Cover Change Monitoring and Analyzing in Huanghe-Huaihe-Haihe Zone Based on Multi-Source Information Fusion	
<i>Chen Huailiang, Liu Zhongyang, Jiang Qingxia</i>	847
Response Characteristic Analysis of Climate Change of Vegetation Activity in Huanghe-Huaihe-Haihe Zone Based on Noaa Ndvi Data Set	
<i>Liu Zhongyang, Chen Huailiang, Du Zixuan, Zou Chunhui</i>	855
Remote Sensing Monitoring of the Dynamic Changes of Vegetation Coverage and Its Types Before and After the Emergent Water Transportation yo the Lower Reaches of the Tarim River	
<i>Z. L. Yan, H. F. Tian, Q. Hang, R. Zhuo, Y. Q. Wang, C. Xia</i>	863
Study on Independent Component Analysis' Application in Classification and Change Detection of Multispectral Images	
<i>Xiao benlin, Li Fangfang, Mao xingliang, Jin Huazhong</i>	871
Research on a Decisive Evaluation Method for Change Detection Based on Application	
<i>Han Liu, Ming Dong, Xiaokun Zhu</i>	877
Flood Hazard Assessment Using Panchromatic Satellite Imagery	
<i>Ahmed Shaker, W.Y. Yan, M.S. Wong, Nagwa El-Ashmawy, Bahaaeddin IZ Alhaddad</i>	881
Detecting Building Changes from Aerial Images Using Height Information	
<i>Shunping Ji, Xiuxiao Yuan</i>	887
Algorithmic Elaboration on Multi-Source Image Registration in Remote Sensing	
<i>Joz Wu, Ming-Che Liu, Chi Chang</i>	893
Long Term Land Use and Land Cover Change and Its Impact on Cool Temperate Rainforest in the Strzelecki Ranges	
<i>Z. Zhang, J. Peterson, X. Zhu, W. Wright</i>	899
Building Change Detection Based on Object Extraction in Dense Urban Areas	
<i>L. Zhu, H. Shimamura, K. Tachibana, Y. Li, P. Gong</i>	905

Selecting Features for Urban Change Detection <i>Chunlei Huo, Zhixin Zhou, Keming Chen, Hanqing Lu, Jian Cheng</i>	909
Monitoring Vegetation Dynamic in Horqin Sandy Land from SPOT Vegetation Time Series Imagery <i>F. Huang, P. Wang, X.N. Liu</i>	915
Field-Oriented Assessment of Agricultural Crops Through Temporal Segmentation of MODIS Vi Data <i>M. Jonathan, D. Arvor, M. S. P. Meirelles, V. Dubreuil</i>	921
Change Detection for Aerial Photo Database Update <i>Yongdae Gweon, Yun Zhang</i>	927
Research on Spatial-Temporal Change of Urban Thermal Environment Based on Remote Sensing <i>Q. G. Zhou, Y. zhang</i>	933
Change Detection of Irrigated Crop Land Using Satellite Imagery <i>M. ROUCHDI, S. CHAHBOUN, A. RAMDANE, M. HAMMOUDO, A. RAHOU</i>	939
A Fast Method of Smoothing Vector Graph Converted from Raster Image <i>YUE Jian-wei, HUANG Jun, WANG Bin</i>	943
Detection of Land Cover Changes Using Multi-Temporal Satellite Imagery <i>Wafa Nori, El Nour Elsidig, Irmgard Niemeyer</i>	947
The Research of the Dynamic Monitoring Technique for Land Use Based on Remote Sensing Imagery <i>Shao Yong-she, Zhang Shao-ming, Dou Jian-fang, Jia Sheng-ju</i>	953
Object-Level Change Detection for Multi-Temeporal High-Resolution Remote Sensing Imagery <i>Mu H. Wang, Ji.X Zhang, Hai T. Li, Hua L.Xu</i>	959
A Dust-Storm Process Dynamic Monitoring With Multi-Temporal MODIS Data <i>DI Mei, LU Xiushan, SUN Lin, WANG Ping</i>	965
Evaluation of Urban Heat Island in Istanbul Using Remote Sensing Techniques <i>U. G. Basar, S. Kaya, M. Karaca</i>	971
Extracting Cropping Index Variations in Northern China Based on NDVI Time-Series <i>ZHU Xiaolin, WU Jin, CHEN Jin</i>	977
Design and Development of a New Model for Automatic Change Detection of Buildings from Aerial Images <i>Simintaj ziraksaz,Hamid Ebadi, Farshid Farnood Ahmadi, saeed sadeghian</i>	983
Evaluation of Changes in Atlantic Forest (Valley of Cuña Piru,Misiones, Argentina) with Multi-Temporal Satellite Data. <i>A. Drozd,S. Torrusio, M. Arturi</i>	989
Seasonal Vegetation Change Detection Using Independent Component Analysis <i>S. Chitroub, S. AlSultan</i>	993
Retrievals of Canopy Biophysical Variables Using Multi-Temporal Remote Sensing Data <i>Zhiqiang Xiao, Jindi Wang, Tiegang Tong</i>	999
A Method of High-Resolution Remote Sensing Images Building on Edge Extraction <i>WANG DAN, SONG WEI-dong</i>	1005
Research on Monitoring the Changes of Desertification Based on Remote Sensing <i>Li CUI</i>	1009
Change Detection of Mountain Glacier Surface Using Aerial and Satellite Imagery: A Case Study in Iran, Alamchal Glacier <i>M.S. Moussavi, M.J. Valadan Zoej, M.R sahebi, Y. Rezaei</i>	1013
Multi-Temporal Data Integration for the Changeability Detection of the Unique Słowinski National Park Landscape <i>K. Michalowska, E. Glowienka</i>	1017

Land Degradation Analysis in the Ongi River Basin <i>Tungalag.A, Tsolmon.R, Bayartungalag.B</i>	1021
Estimation of Glaciers and Snow Coverage in Western Part of Mongolia Using MODIS Snow Products <i>B.Khosbayar, R.Tsolmon,Y.Uranchimeg</i>	1025
Study on the Glaciers of the Western Mongolia Using Palsar Data <i>N.Tuvjargal, L.Ochirkhuyag, R.Tsolmon, B.Khosbayar</i>	1027
Detecting Outliers and Asserting Consistency in Agriculture Ground Truth Information by Using Temporal Vi Data from MODIS <i>D. Arvor, M. Jonathan, M. S. P. Meirelles, V. Dubreuil</i>	1031
Monitoring Land Use Change by Multi-Temporal Landsat Remote Sensing Imagery <i>Tayyebi, A. M.R. Delavar, S. Saeedi, J. Amini and H. Alinia</i>	1037
A Simple Method for Information Extraction of Farm Field in Tarim River Basin Using MODIS Data <i>Shudong Wang, Suhong Liu, Xiaohua Wang, Jianxia Guo, Yanmin Shuai, Ni Hu</i>	1043
Design and Implementation of Information Sharing Platform of Land and Resources <i>Zongxiang Zha, Wenjue Jia</i>	1047

WG VII/6 Remote Sensing Data Fusion

Generalized Model for Remotely Sensed Data Pixel-Level Fusion <i>Zhang Jixian, Yang Jinghui, Li Haitao, Yan Qin</i>	1051
Colour-Based and Criteria-Based Methods for Image Fusion <i>Oguz Gungor, Jie Shan</i>	1057
Gradient Cross Correlation for Sub-Pixel Matching <i>N. A. Campbell, X. Wu</i>	1065
Bridge Height Estimation from Combined High-Resolution Optical and SAR Imagery <i>J. D. Wegner, U. Soergel</i>	1071
Change Detection Approach To SAR and Optical Image Integration <i>Yu ZENG, Jixian ZHANG, J.L.VAN GENDEREN</i>	1077
Knowledge Based Expert Systems in Remote Sensing Tasks: Quantifying Gain from Intelligent Inference <i>M. Shoshany</i>	1085
Fusion of Remotely Sensed Multispectral Imagery and LIDAR Data for Forest Structure Assessment At the Tree Level <i>S. S. Ali, P. Dare, S. D. Jones</i>	1089
Use of Line Segments in High Resolution Satellite Image Registration <i>J.Heikkinen, A.Laiho-Heikkinen, H.Haggrén</i>	1095
Methods for Image Fusion Quality Assessment a Review, Comparison and Analysis <i>Yun Zhang</i>	1101
Image Fusion Based on Extensions of Independent Component Analysis <i>Mi Chen, Yingchun Fu, Deren Li, Qianqing Qin</i>	1111
Data Fusion Using IHS Transformations for Exploring Ore Deposits in Northeastern Part of the Saharan Metacraton <i>A. H. Nasr, T. M. Ramadan</i>	1119

Land Cover Classification for Future-Oriented Development Plan of Multifunctional Administrative City of Korea	
<i>Han Seung-Hee, Lee Jin-Duk</i>	1125
An Auto-Adaptive Information Preservation Fusion Method for SAR and Multispectral Images	
<i>H. Sun, B. Pan, Y. Chen, J. Li, L. Deng</i>	1129
Application of Tm and SAR Images Fusion for Land Monitoring in Coal Mining Areas	
<i>Wenbo Wu, Lijing Bu, Yang Ji</i>	1137
Study of Remote Sensing Image Fusion and Its Application in Image Classification	
<i>Wu Wenbo, Yao Jing, Kang Tingjun</i>	1141
A Spatial Domain and Frequency Domain Integrated Approach To Fusion Multifocus Images	
<i>J. Yang, Y. Ma, W. Yao, W. T. Lu</i>	1147
Research on False Color Image Composite and Enhancement Methods Based on Ratio Images	
<i>Liang Jun, Chen Songwei, Li Duanyou, Wang Bin, Liu Shuo, Zhou Liming</i>	1151
Fusion of Remote Sensing Image Base on the PCA+Atrous Wavelet Transform	
<i>Yan Luo, Rong Liu, Yu Feng Zhu</i>	1155
The Study on Image Fusion for High Spatial Resolution Remote Sensing Images	
<i>S.S.Han, H.T.Li, H.Y. Gu</i>	1159
Study on the Remote Sensing Application Techniques Based on Chinese Satellites in Siberian Area	
<i>Wang Juanle, Li Shuang, Jia Wenchen</i>	1165
An Improved IHS Fusion Method for Merging Multi-Spectral and Panchromatic Images Considering Sensor Spectral Response	
<i>Jia Xu, Zequn Guan, Jie Liu</i>	1169
Airborne Multidimension Integrated Remote Sensing System AMIRS and It's Data Fusion	
<i>Ma Yanhua, Jing Zhongliang, Wang Jianyu, Shu Rong</i>	1175
The Fusion of Spot Panchromatic and Tm Multispectral Image Based on Multi-Band Biorthogonal Wavelet	
<i>LIANG Shouzhen, LI Lanyong</i>	1179
A Comparison of Bayesian and Evidence-Based Fusion Methods for Automated Building Detection in Aerial Data	
<i>K. Khoshelham, S. Nedkov, C. Nardinocchi</i>	1183
Data Fusion of Multi-Source Remote Sensing Based on Level Set Method and Application To Urban Road Extraction	
<i>Cao Guangzhen, Hou Peng, Jin Ya-Qiu</i>	1189
Fusion of SAR Images (PALAR and RADARSAT-1) With Multispectral Spot Image: a Comparative Analysis of Resulting Images	
<i>S. Abdikan, F. Balik Sanli, F. Bektas Balcik, C. Goksel</i>	1197
Intergration of High Resolution Aerial Images and Airborne LIDAR Data for Forest Delineation	
<i>Zuyuan Wang, Ruedi Boesch, Christian Ginzler</i>	1203
Normalizing Aster Data Using MODIS Products for Land Cover Classification	
<i>F. Gao, J. G. Masek</i>	1209
A Remote Sensing Image Segmentation Method Based on Spectral and Structure Information Fusion	
<i>Qinling Dai, Guoying Liu, Cancan Wang, Leiguang Wang</i>	1215
Hyperspectral Resolution Enhancement Using High-Resolution Imagery With Wavelet Package Algorithm and Optimal Index Principle	
<i>D. G. Jun, Z. Haifang, Z. Chaojie</i>	1223

Study on Data Fusion Methods With Optimal Information Preservation Between Spectral and Spatial Based on High Resolution Imagery <i>Wenbo Li, Qiuwen Zhang</i>	1227
The Remote-Sensing Image Fusion Based on GPU <i>Jun Lu, Baoming Zhang, Zhihui Gong, Ersen Li, Hangye Liu</i>	1233
3D City Modelling of Istanbul Historic Peninsula by Combination of Aerial Images and Terrestrial Laser Scanning Data <i>S. Buhur, Th. Kersten, G. Büyüksalih, K. Jacobsen, I. Baz, S. Dursun, D. Sagir</i>	1239
Wavelet Enhancement of Cloud-Related Shadow Areas in Single Landsat Satellite Imagery <i>A. Abd-Elrahman, M. Elhabiby</i>	1247
An Improved IHS Image Fusion Method with High Spectral Fidelity <i>Wen Dou, Yunhao Chen</i>	1253
A Fusion Method of SAR and Optical Images for Urban Object Extraction <i>Jia Yonghong, Rick S. Blum</i>	1257
Multi-spectral image fusion method based on wavelet transformation <i>Yao wan-qiang, Zhang chun-sheng</i>	1261
A Region-Based Technique for Fusion of High Resolution Images Using Mean Shift Segmentation <i>Li Shuang, Li Zhilin</i>	1267
Framelet-Based Multiresolution Image Fusion With an Improved Intensity-Hue-Saturation Transform <i>M. J. Choi, D. H. Lee, H. S. Lim</i>	1273
Resolution Merge of 1:35.000 Scale Aerial Photographs With Landsat 7 ETM Imagery <i>M. Erdogan, H.H. Maras, A. Yilmaz, Ö.T. Özerbil</i>	1281
Accuracy Evaluation of Rational Polynomial Coefficients Solution for Quickbird Imagery Based on Auxiliary Ground Control Points <i>Yun Zhan, Chun Liu, Gang Qiao</i>	1287
A Fusion Algorithm of High Spatial and Spectral Resolution Images Based on ICA <i>GuoKun Zhang, LeiGuang Wang, Hongyan Zhang</i>	1295

WG VII/7 Innovative Problem Solving Methodologies for Less Developed Countries

The ITC Geonetcast-Toolbox Approach for Less Developed Countries <i>Ben Maathuis, Chris Mannaerts and Bas Retsios</i>	1301
Urban Social Vulnerability Assessment Using Object-Oriented Analysis of Remote Sensing and GIS Data. A Case Study for Tegucigalpa, Honduras. <i>A. Ebert, N. Kerle</i>	1307
Building a Consistent Geometric Frame Over Sparse Islands Using Spot 5 Data <i>T. Yoshino, H. Muraki, Y. Yin, M. Bernard</i>	1313
A Multivariate Regression Analysis for Deriving Engineering Parameters of Expansive Soils from Spectral Reflectance <i>Fekerte Arega Yitagesu, Freek van der Meer, Harald van der Werff, Wolter Zigterman</i>	1319
Multi-Source Remote Sensing Technology Using in the Service of Coal Resources Exploration and Coal Industry Informatization Construction <i>Zhang Wenruo, Kang Gaofeng, Wang Xiaopeng</i>	1325
In Support of the Millennium Development Goals: GIS Use for Poverty Reduction Tasks <i>Felicia O. Akinyemi</i>	1331

Sampling Methods Using Remote Sensing and Global Positioning System for Crop Acreage Estimation At a National Scale in China <i>Quan Wu, Li Sun</i>	1337
Database Collection for Land Cover Validation and Monitoring on Remote Sensing/GIS in West Part of Mongolia <i>R. Tsolmon, John van genderen, D. Narantuya</i>	1343
Accuracy Assessment of Contour Interpolation from 1:50,000 Topographical Maps and SRTM Data for 1:25,000 Topographical Mapping <i>A. P. Ozah, O. Kufoniyi</i>	1347
Innovative Satellite Image Map of R.Alkhabrta Area, Saudi Arabia Using High Resolution Image <i>Sultan AlSultan, H. S. Lim, M. Z. MatJafri, K. Abdullah, N. Mohd. Saleh</i>	1355
Digital Photogrammetry Reaches Grass Root Levels in India <i>Vinod K Agrawal, G.S.Kumar</i>	1359

ICWG VII/IV Derivation of Global Data, Environmental Change and Sustainability Indicators

Trend Analyses of a Global Soil Moisture Time Series Derived from ERS-1/-2 Scatterometer Data:Floods, Droughts and Long Term Changes <i>C. Kuenzer, Z. Bartalis, M. Schmidt, D. Zhao; W. Wagner</i>	1363
A New Global Land Cover Map, GLCNMO <i>R. Tateishi, Bayaer, M. A. Ghar, H. Al-Bilbisi, J. Tsendayush, A. Shalaby, Alimujiang Kasimu, N. T. Hoan, T. Kobayashi, B. Alsaadeh, Md. M. Rahman, E. Tsevengee, Y. Yamada, S. Kajikawa</i>	1369
Release of the Global Map Data Set Version 1 <i>K. Nakagawa, S. Kajikawa, H.fujimura, S. Sakabe</i>	1373
Remote Sensing Image-Based Analysis of the Relationship Between Urban Heat Island and Vegetation Fraction <i>Liqin Cao, Pingxiang Li, Liangpei Zhang, Tao Chen</i>	1379
Impact of Elevation and Aspect on the Spatial Distribution of Vegetation in the Qilian Mountain Area With Remote Sensing Data <i>X.M. Jin; Y.-K. Zhang M.E. Schaepman , J.G.P.W. Clevers, Z. Su</i>	1385
Analysis on Optimal Bands for Retrieval of Mixed Canopy Chlorophyll Content Based on Remote Sensing <i>GAO Yan-hua, CHEN Liang-fu, ZHOU Xu, LI Li, LIU Qin-huo, TIAN Guo-liang</i>	1391
Vegetation Cover Annual Changes Based on MODIS/Terra NDVI in the Three Gorges Reservoir Area <i>Sun Xiaoxia, Zhang Jixian, Liu Zhengjun</i>	1397

Theme Session

ThS-17 Geo-Information Contribution to Sustainability Indicators

Land Resource Mapping Using Multi-Source Data for Mountainous and Forestry Areas. <i>Mrs. Hanne Gro Wallin</i>	1401
Assessment of Impact on Landscape Development To Ecological Service Values and Goods in Malaysia Lowland Tropical Rainforest Using Integrated Remote Sensing and GIS Techniques <i>M. Hashim, A. L. Ibrahim, M. Marghany, S. Ahmad, T. Okuda</i>	1403
Socio-Economic and Environmental SIG-Database Design: An Application to the Araricá County Management in Southern Brazil	

<i>M.A.F. Hansen, M. Tsao, O. G. Wöhl Coelho</i>	1415
Remote Sensing for Assessing Environmental Impacts Based on Sustainability Indicators <i>John C. Trinder</i>	1421
GIS Mapping of Landscape and Disasters of Sado Island, Japan <i>Hiromitsu, Yamagishi</i>	1429
Comparing and Synthesizing Different Global Agricultural Land Datasets for Crop Allocation Modeling <i>Liangzhi You ,Stanley Wood, Kate Sebastian</i>	1433
Local Scale Mapping of Net Primary Production in Tropical Rain Forest Using MODIS Satellite Data <i>Abd Wahid Rasib, Ab. Latif Ibrahim, A.P. Cracknell and Mohd Azahari Faidi</i>	1441
A GIS-Based Approach to Spatio-Temporal Analysis of Urban Air Quality in Chengdu Plain <i>Shujun Song</i>	1447
Agro-Climatic Planning and Information Bank (APIB)For Uttarakhand State, India <i>V.Madhava Rao, Om Prakash, Anand Sharma, R R Hermon, P Kesava Rao, N S R Prasad, T Phanindra Kumar, S S R S Srinivas Kumar</i>	1451
Using Satellite Remote Sensing To Assess Evapotranspiration: Case Study of the Upper Ewaso Ng'iro North Basin, Kenya <i>Jeniffer Kinoti Mutiga, Zhongbo Zu, and Tsaehai Woldai</i>	1457
Integrating Multi-Source Information via Fuzzy Classification Method for Wetland Grass Mapping <i>X. Zhao, X. Chen, A. Stein</i>	1463
Moderate Resolution Satellite Data in Forest Monitoring Systems <i>A. Kopka, M. Ehlers, J. Schiewe</i>	1471
Mapping of Fire Severity and Comparison of Severity Indices Across Vegetation Types in Gibraltar Range National Park <i>Lalit Kumar, Peter Clarke, Carlos Muñoz and Kirsten Knox</i>	1477
Study on Relation Between Urban Structure and Land Value Factors in the Tokyo Metropolis Using Geographic Information System (GIS) <i>Ippei Harada, Akihiko Kondoh</i>	1483
Hyperspectral Remote Sensing – a Malawian Perspective <i>Mkondo Earl Moyo</i>	1489
Recent Developments in Landsat-Based Continental Scale Land Cover Change Monitoring in Australia <i>Furby, S.L., Caccetta, P. A., Wallace, J. F., Wu, X., O'Connell, J., Collings, S., Traylen, A. and Deveraux, D</i>	1491
Sustainable Land-Use Planning Support by GIS-Based Evaluation of Landscape Functions and Potentials <i>W. Drzewiecki</i>	1497
New Methodology of Representing the Positional Error of Non-Point Features in GIS <i>H.X. Mao, W.Z. Shi</i>	1503
A GIS-Based Updating System for Gridded Population Database of China <i>Huang Yaohuan , Yang Xiaohuan, Wang Jianhua, Zhou Qin</i>	1509
Cultivated Land Change Analysis of Yangtze River Delta Region Based on MODIS <i>Shen Tao, Li Chengming</i>	1517
Global Urban Mapping Using Population Density, MODIS and DMSP Data With the Reference of Landsat Images <i>Alimujiang Kasimu, Ryutaro Tateishi</i>	1523

Geochemical Sampling Scheme Optimization on Mine Wastes Based on Hyperspectral Data <i>Zhao Ting, Pravesh Debba, Alfred Stein</i>	1529
---	------

Theme Sessions: ThS 18 - Change detection

Detection of Changes in Land Degradation in Northeast China from Landsat TM and ASTER Data <i>Jay Gao</i>	1533
---	------

Variations in Cropland Phenology in China from 1983 to 2002 <i>Wenbin Wu, Ryosuke Shibasaki, Peng Yang, Qingbo Zhou, Huajun Tang</i>	1539
--	------

Change Detection of Wetland in Hongze Lake Using a Time Series of Remotely Sensed Imagery <i>R. RUAN, Y. ZHANG, Y. ZHOU</i>	1545
---	------

Urban Land-Cover Mapping and Change Detection with Radarsat SAR Data Using Neural Network and Rule-Based Classifiers <i>Hongtao Hu, Yifang Ban</i>	1549
--	------

Automatic Land Cover Change Detection Based on Image Analysis and Quantitative Methods <i>YANG Gui-jun, LIU Qin-huo, ZHANG Ji-xian</i>	1555
--	------

Change Mechanism Analysis and Integration Change Detection Method on SAR Images <i>S. Q. Huang</i>	1559
--	------

Decision Fusion for the Unsupervised Change Detection of Multitemporal SAR <i>Shen Shaohong, Wan Youchuan, Lai Zulong, Wei Wei</i>	1569
--	------

Integrated Platform Design and Realization of Land Use Change Detection Based on ERDAS With AO and EML <i>Chunxi Chen, Xiaokun Zhu, Feng Li</i>	1575
---	------

Roads Extraction and Their Changes Detection in Airborne Images With the Help of GIS Data <i>Pengfei Liu, Jianqing Zhang, Li Pan and Liang Zhong</i>	1579
--	------

Monitoring Landscape Dynamics and Conditions of Natural Resources Within and Adjacent To Protected Areas <i>Y.Q. Wang , Y. Zhou , Z. Wu , H. Zhang , J. Zhang, Y. Jin, F. Huang , X. Yin</i>	1585
--	------

Remote Sensing Change Detection Study of the Grand Canal and Environs ---A Case Study in the Yangzhou Section, Jiangsu <i>Yu Lijun, Nie Yueping, Zhang Yan</i>	1591
--	------

The Comparative Study of Three Methods of Remote Sensing Image Change Detection <i>Zhang Shaoqing, Xu Lu</i>	1595
--	------

Improvement of Building Damage Detection and Classification Based on Laser Scanning Data by Integrating Spectral Information <i>M. Rehor, T. Voegtle</i>	1599
--	------

Detection of Changes in Istanbul Area With Medium and High Resolution Space Images <i>S. Bayburt, G.Büyüksalih, I. Baz, K. Jacobsen, T. Kersten</i>	1607
---	------

Snow Cover Area Changing Analysis Over Tibetan Plateau With MODIS and ASTER Data <i>L. Xu , R. Niu , L.Peng</i>	1613
---	------

Identifying the Errors in Monitoring Glacier Changes by Multi-Sources Data Using Remote Sensing and GIS techniques in Mt. Naimona'nyi Region in the Western Himalayas on the Tibetan Plateau in China <i>Q.H. Yea; G. Hamilton, P. A. Mayewski, A. Stein</i>	1617
--	------

Study on Urban Land Use Changes Based on High Resolution Remote Sensing Images <i>Jun Yin, Chenghu Zhou, Yingchun Gao, Junhui Zhang</i>	1623
---	------

A Method for Change Detection With Multi-Temporal Satellite Images Using the RX Algorithm <i>J. A. Malpica and M. C. Alonso</i>	1631
---	------

ENSO Impact on the Vegetation in Murray-Darling Basin: a Satellite Monitoring from 1998 - 2007 Based on Spot/Vegetation NDVI Time Series Data <i>Kaishan Song, Shahbaz Khan, Mohsin Hafeez, Dongmei Lv</i>	1637
Automatic Change Detection Based on Pixel-Change and DSM-Change <i>A. Sasagawa, K. Watanabe, S. Nakajima, K. Koido, H. Ohno, H. Fujimura</i>	1645
Monitoring of Corrosion in Fairy Chimney by Close Range Photogrammetry <i>H.M. Yilmaz, M. Yakar, F. Yildiz</i>	1651
An Object-Oriented Approach To Urban Land Cover Change Detection <i>G. Doxani, S. Siachalou, M. Tsakiri- Strati</i>	1655
The Role of Spatial Metrics on the Performance of an Artificial Neural-Network Based Model for Land Use Change <i>S. Koukoulas, A.T. Vafeidisa, G. Vafeidis, E. Symeonakis</i>	1661
Monitoring Urban Development of Small Chinese Cities Using Innovative Aerial Surveying Technologies <i>Cao Li, Li Hongbo, Gerhard Kemper</i>	1667
Mapping Post-Olympics Urban Use Change in the Periphery of Athens Using Multi-Temporal Pixel-Based and Segmentation Techniques <i>E. Symeonakis, N. Karathanasis, S. Furby, I. Gatsis</i>	1675
Soil Erosion Modelling by Using GIS & Remote Sensing: A Case Study, Ganos Mountain <i>Berk Ustun</i>	1681
Using Remote Sensing and GIS to Investigate Land Use Dynamic Change in Western Plain of Jilin Province <i>Zhan Chunxiao, Liu Zhiming, Zeng Nan</i>	1685
Landscape Effects of Urban Sprawl: Spatial and Temporal Analyses Using Remote Sensing Images and Landscape Metrics <i>Wei Ji</i>	1691
Special Session: SS 7 - Global Monitoring for Environment and Security (GMES)	
A Global Crop Growth Monitoring System Based on Remote Sensing <i>Meng Ji-hua, Wu Bing-fang, Li Qiangzi</i>	1695
Research on the Reasons for Anguli Lake'S Shrinkage and Drying Up Using Satellite Remote Sensing <i>Qiao Yanxiao, Hao Yuesheng, Lv Fengjun</i>	1699
Neural Network-Based Analytical Model for Biomass Estimation in Poyang Lake Wetland Using Envisat ASAR Data <i>Dong Lei, Liao Jingjuan, Shen Guozhuang</i>	1703
GMES Fast Track Land Service 2006-2008 Orthorectification of SPOT 4/5 and Irs-P6 LISS III Data <i>Rupert Müller, Thomas Krauß, Manfred Lehner, Peter Reinartz, Manfred Schroeder, Bianca Hörsch</i>	1709
Using a High Throughput Computational GRID for the Retrieval of Aerosol Properties Over China Land <i>Wei Wan; Yong Xue, Linyan Bai, Jie Guang, Yinjie Li, Jianwen Ai, Ying Wang</i>	1717
Correlation between Urban Heat Island Effect and the Thermal Inertia Using ASTER Data In Beijing <i>Yurong CHEN, Mingyi DU, Rentao DONG</i>	1723
Improvement of Aerosol Retrieval through Cloud Identification <i>Yingying Ma, Wei Gong, Jun Li</i>	1729
Development of High Resolution 3D Sound Propagation Model Using LIDAR Data and Air Photo <i>Susham Biswas, Bharat Lohani</i>	1735

Comparative Analysis of Several Typical Approaches of Desertification Dynamic Monitoring Based on TM Date <i>HU Zhenqi, XU Xianlei, PENG Danqing</i>	1741
Deriving Land Use and Canopy Cover Factor from Remote Sensing and Field Data in Inaccessible Mountainous Terrain for Use in Soil Erosion Modelling <i>M. Suriyaprasit, D. P. Shrestha</i>	1747