


CPS CANADIAN FOREST SERVICE
SCF SERVICE CANADIEN DES FORÊTS
www.mnsc.gc.ca/for/for_euf

Forest monitoring information needs in Canada

Mike Wulder and Joanne White
Canadian Forest Service
Pacific Forestry Centre, Victoria

GEOBIA 2008

CPS CANADIAN FOREST SERVICE
SCF SERVICE CANADIEN DES FORÊTS
www.mnsc.gc.ca/for/for_euf

Outline

- ✦ **The mandate of the CFS**
- ✦ Canada's forests
- ✦ Information needs
- ✦ Responding to information needs:
 - National Forest Inventory
 - Forest fragmentation
 - Biodiversity monitoring




CPS CANADIAN FOREST SERVICE
SCF SERVICE CANADIEN DES FORÊTS
www.mnsc.gc.ca/for/for_euf

Mandate of the Canadian Forest Service (CFS)

- National science-based policy institution; NRCan
- Provides analysis/advice to GoC on key forest matters
- Leader in forest science innovative approaches to sustainable forest management
- Promotes competitiveness of Canada's forest sector




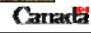




CPS CANADIAN FOREST SERVICE
SCF SERVICE CANADIEN DES FORÊTS
www.mnsc.gc.ca/for/for_euf

Outline

- ✦ The mandate of the CFS
- ✦ **Canada's forests**
- ✦ Information needs
- ✦ Responding to information needs:
 - National Forest Inventory
 - Forest fragmentation
 - Biodiversity monitoring

CPS CANADIAN FOREST SERVICE
SCF SERVICE CANADIEN DES FORÊTS
www.mnsc.gc.ca/for/for_euf

Canada's Forests

- 10% of the world's forests
- 20-30% of the world's boreal forest
- 20% of the world's fresh water resources
- 180 tree species
- 93,000 other species




Wulder, M.A., C. Campbell, J.C. White, M. Flannigan, and I.D. Campbell, 2007. National Context in the International Circumboreal Community. *The Forestry Chronicle*, Vol. 83, No. 4, pp. 539-556.





CPS CANADIAN FOREST SERVICE
SCF SERVICE CANADIEN DES FORÊTS
www.mnsc.gc.ca/for/for_euf

Canada's Forests

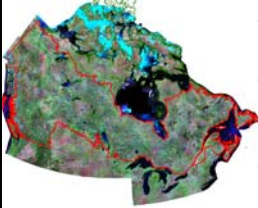
- 998.4 million hectares
- 402.1 million hectares of forest and wooded lands
- 143 million hectares subject to commercial activity








CPS CANADIAN FOREST SERVICE
SCF SERVICE CANADIEN DES FORÊTS
www.nrcan.gc.ca/cfs/scf

Canada's Forests

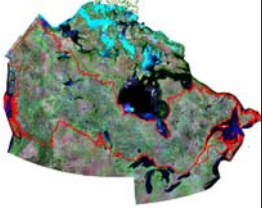


- 0.4% (0.9 million ha) is harvested annually
- In 2005:
 - 56,000 ha deforested
 - 9,400 ha afforested
- ~ 3 million hectares of forest are affected by fire and insects annually



 Natural Resources Canada / Ressources naturelles Canada 

CPS CANADIAN FOREST SERVICE
SCF SERVICE CANADIEN DES FORÊTS
www.nrcan.gc.ca/cfs/scf

Canada's Forests



- 361,300 direct jobs
- 900,000 indirect jobs
- 3% of GDP
- Forest product exports \$44.6 billion
- World's largest exporter of forest products (16% of global exports in 2004).

 Natural Resources Canada / Ressources naturelles Canada 

CPS CANADIAN FOREST SERVICE
SCF SERVICE CANADIEN DES FORÊTS
www.nrcan.gc.ca/cfs/scf

Canada's Forests


- ✗ **93% of forest land is publicly owned:**
 - 77% under provincial or territorial jurisdiction
 - 16% under federal purview
- ✗ **Provinces and territories:**
 - conservation and management of the forest resources on provincial/territorial Crown lands.
- ✗ **Federal government:**
 - national reporting obligations
 - national economy, trade, and international relations
 - federal lands and parks
 - constitutional, treaty, political and legal responsibilities for Aboriginal peoples


 Natural Resources Canada / Ressources naturelles Canada 

CPS CANADIAN FOREST SERVICE
SCF SERVICE CANADIEN DES FORÊTS
www.nrcan.gc.ca/cfs/scf

Outline

- ✗ The mandate of the CFS
- ✗ Canada's forests
- ✗ **Information needs**
- ✗ Responding to information needs:
 - National Forest Inventory
 - Forest fragmentation
 - Biodiversity monitoring



 Natural Resources Canada / Ressources naturelles Canada 

CPS CANADIAN FOREST SERVICE
SCF SERVICE CANADIEN DES FORÊTS
www.nrcan.gc.ca/cfs/scf

Information Needs: Program



- **Supporting national and international reporting commitments**
 - Kyoto, UN Conventions on Biological Diversity and Climate Change, CCFM C&I, Montréal Process, State of Forests
- **Protecting Canada's forest products market share**
 - certification
- **Increasing complexity of forest management**
 - multiple values: biodiversity, forest products, water
- **Public involvement in decision making**

 Natural Resources Canada / Ressources naturelles Canada 

CPS CANADIAN FOREST SERVICE
SCF SERVICE CANADIEN DES FORÊTS
www.nrcan.gc.ca/cfs/scf

Information Needs: Data

- **Monitoring of forests is required at a range of spatial and temporal scales**
 - individual trees to ecosystems
- **Operational forestry**
 - spatially detailed information encompassing a broad suite of attributes.
- **Monitoring change and disturbance events at the landscape level**
- **Broad ecosystem and national level trends**
 - synoptic and temporally dense change detection

 Natural Resources Canada / Ressources naturelles Canada 

CPS CANADIAN FOREST SERVICE
SCF SERVICE CANADIEN DES FORÊTS
www.mfn.gc.ca/nfi-enf

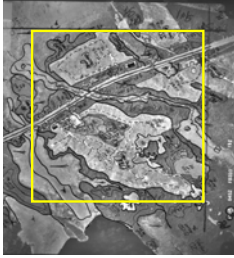
Outline

- ✦ The mandate of the CFS
- ✦ Canada's forests
- ✦ Information needs
- ✦ **Responding to information needs:**
 - National Forest Inventory
 - Forest fragmentation
 - Biodiversity monitoring

Natural Resources Canada / Ressources naturelles Canada

CPS CANADIAN FOREST SERVICE
SCF SERVICE CANADIEN DES FORÊTS
www.mfn.gc.ca/nfi-enf

National Forest Inventory



- 1% sample
- 2km x 2km photo plots spaced on a 20km grid
- 1:20,000 air photos
- ground plots
- reporting – 5 year cycle
- remeasurement – 10 year cycle

Gillis, M.D., A.Y. Omule, and T. Brierley. 2005. Monitoring Canada's forests: The National Forest Inventory. *The Forestry Chronicle*, Vol. 81, No. 2, pp. 214-221.

Natural Resources Canada / Ressources naturelles Canada

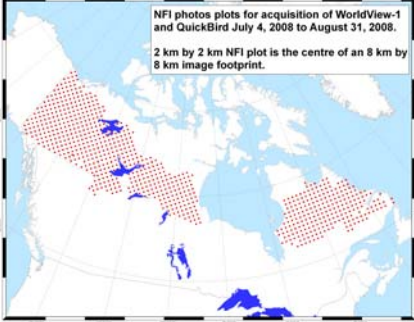
CPS CANADIAN FOREST SERVICE
SCF SERVICE CANADIEN DES FORÊTS
www.mfn.gc.ca/nfi-enf

National Forest Inventory: Role for remotely sensed data

- High spatial resolution imagery to complete photo plot requirements.
- Moderate spatial resolution imagery for extension, audit, bias detection, etcetera...

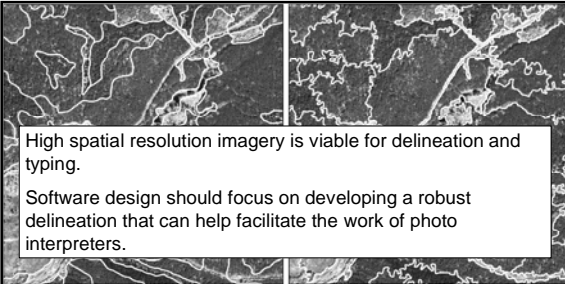
Natural Resources Canada / Ressources naturelles Canada

CPS CANADIAN FOREST SERVICE
SCF SERVICE CANADIEN DES FORÊTS
www.mfn.gc.ca/nfi-enf



NFI photos plots for acquisition of WorldView-1 and QuickBird July 4, 2008 to August 31, 2008.
2 km by 2 km NFI plot is the centre of an 8 km by 8 km image footprint.

Natural Resources Canada / Ressources naturelles Canada



High spatial resolution imagery is viable for delineation and typing.
Software design should focus on developing a robust delineation that can help facilitate the work of photo interpreters.

Manual, forest inventory IKONS Pan Automated, segmentation

Wulder, M.A., J.C. White, G.J. Hay, and G. Castilla. 2008. Towards automated segmentation of forest inventory polygons on high spatial resolution satellite imagery. *The Forestry Chronicle*, Vol. 84, No. 2, pp. 221- 230.

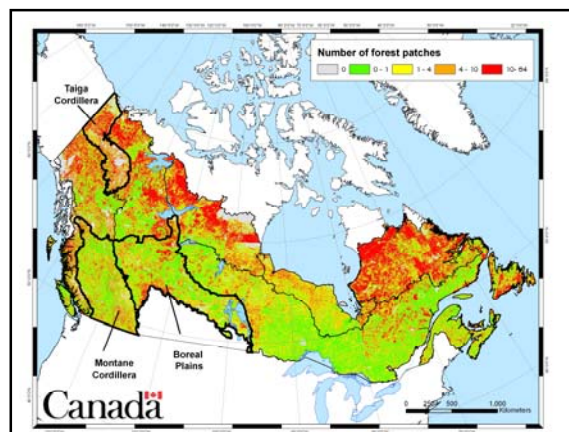
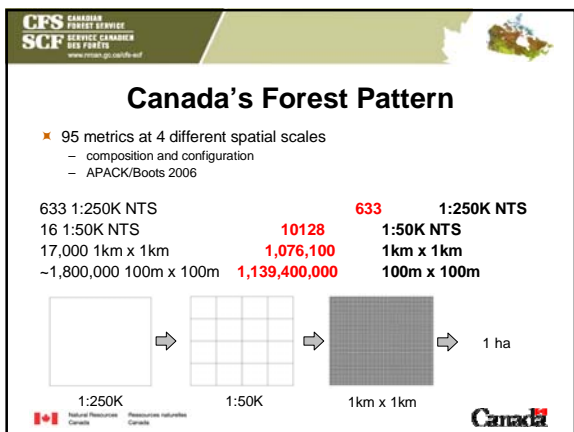
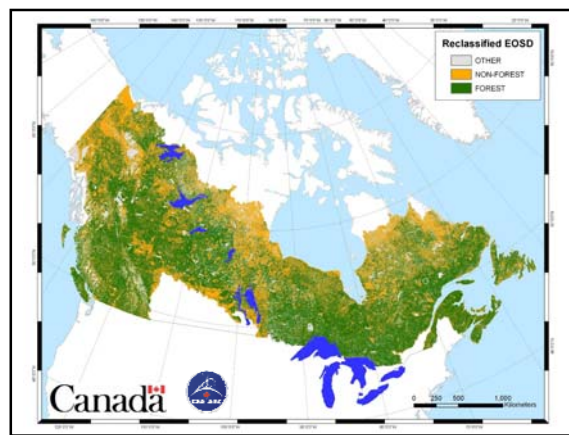
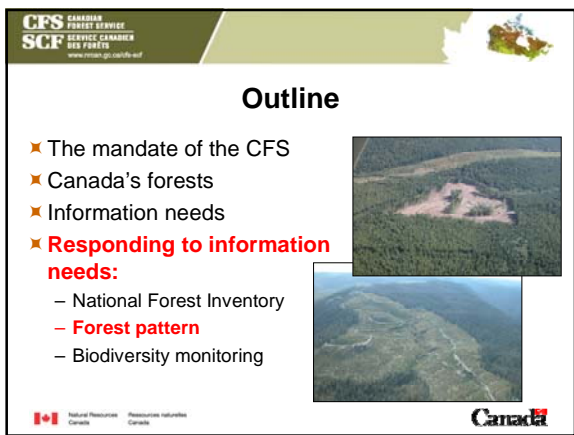
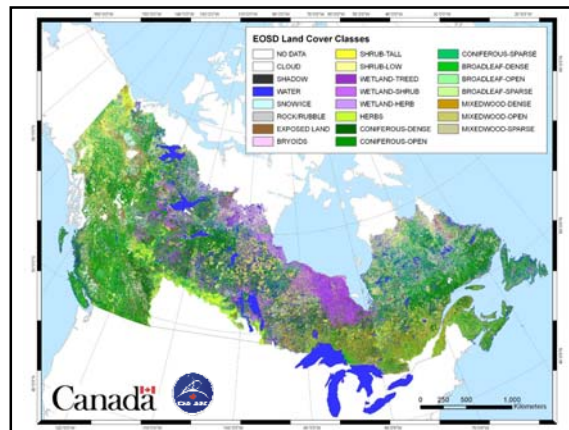
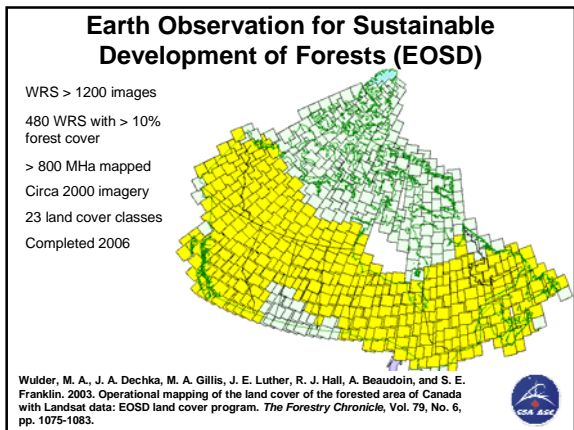
Natural Resources Canada / Ressources naturelles Canada

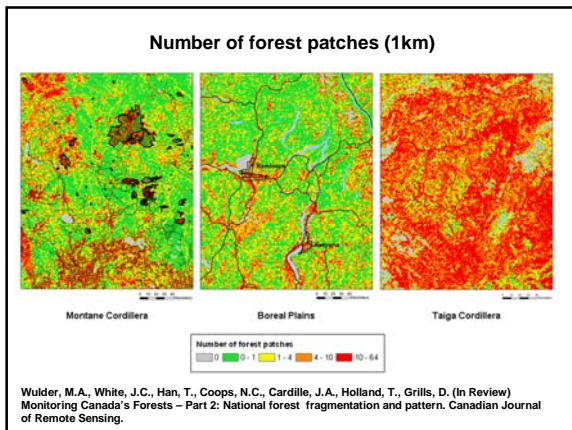
CPS CANADIAN FOREST SERVICE
SCF SERVICE CANADIEN DES FORÊTS
www.mfn.gc.ca/nfi-enf

Role of moderate spatial resolution imagery in the NFI

- **Confirm/verify the inventory**
- **Land cover products**
 - Provide basic photo plot data in the North
 - Provide the potential to extend the NFI beyond 1%
 - Opportunities for inventory audit, bias detection
- **Change products**
 - Assess change (quantify location, extent, type)
 - As a coarse filter to identify need to revisit plots

Natural Resources Canada / Ressources naturelles Canada





CFS CANADIAN FOREST SERVICE
 SCF SERVICE CANADIEN DES FORÊTS
 www.mian.gc.ca/dfs-ef

Outline

- ✦ The mandate of the CFS
- ✦ Canada's forests
- ✦ Information needs
- ✦ **Responding to information needs:**
 - National Forest Inventory
 - Forest pattern
 - **Biodiversity monitoring**

Natural Resources Canada Ressources naturelles Canada

CFS CANADIAN FOREST SERVICE
 SCF SERVICE CANADIEN DES FORÊTS
 www.mian.gc.ca/dfs-ef

BioSpace: Biodiversity Monitoring

- ✦ Traditional approaches to measuring biodiversity are useful, but spatially constrained
- ✦ RS offers the opportunity for large area characterizations of biodiversity that are:
 - systematic
 - repeatable
 - spatially exhaustive
- ✦ Rationale:
 - national
 - low-cost
 - current state + change through time

Natural Resources Canada Ressources naturelles Canada

CFS CANADIAN FOREST SERVICE
 SCF SERVICE CANADIEN DES FORÊTS
 www.mian.gc.ca/dfs-ef

BioSpace: Biodiversity Monitoring

- ✦ Key indicators of diversity that can be derived from Earth observation data include measures of:
 1. topography
 2. vegetation production or function
 3. spatial arrangement and structure of habitat
 4. metrics of disturbance
- ✦ National early warning system, indicating areas where of potential biodiversity change may be occurring.

Natural Resources Canada Ressources naturelles Canada

BioSpace

	Topography	Production	Land Cover and fragmentation	Disturbance
Spatial resolution	90 m < 60° N, 1km > 60° N	1000 m	25 m	1000m
Image extent	Canada Wide	All vegetated areas	All forested areas	Canada Wide
Type of data	RADAR	IPAR	Enhanced Thematic Mapper	Greenness and Temperature
Platform	Shuttle	Terra / Aqua / MERIS	Landsat	Terra / Aqua
Temporal	Single	Monthly / Annual	Once	8-day
Cost	Free	Free	Free	Free
Processing	Elevation Residuals	Dynamic Habitat Index (DHI)	Image classification	Disturbance Index

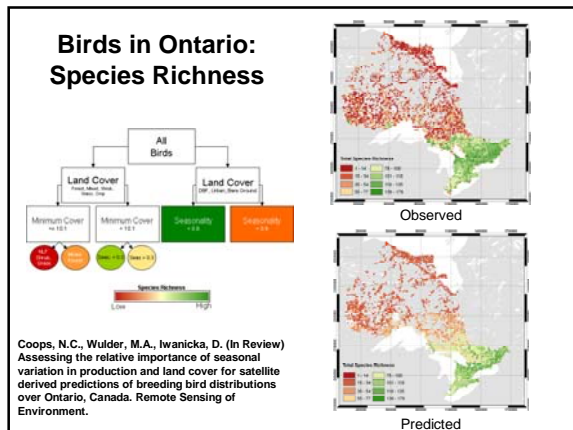
Duro, D.C., Coops, N.C., Wulder, M.A., Han, T. 2007. Development of a large area biodiversity monitoring system driven by remote sensing. *Progress in Physical Geography*, Vol. 31, No. 3, pp.1-26.

Natural Resources Canada Ressources naturelles Canada

Dynamic Habitat Index

1. Cumulative annual greenness
2. Minimum level of perennial cover
3. Degree of vegetation seasonality

Coops, N.C., Wulder, M.A., Duro, D.C., Han, T., Berry, S. 2008. The development of a Canadian dynamic habitat index using multi-temporal satellite estimates of canopy light absorbance. *Ecological Indicators*, Vol. 8, pp. 754-766.



CFS CANADIAN FOREST SERVICE
SCF SERVICE CANADIEN DES FORÊTS
www.nrcan.gc.ca/forest

Summary

- Broad range of information needs and data requirements
 - multi-scale, multi-temporal
 - monitoring through time
- Refinement of existing methods
 - NFI and semi-automated delineation
- Integrating data sources and information
- New applications and value-added
- Data generalization
 - data analysis, information generation, synthesis, and reporting

Natural Resources Canada / Ressources naturelles Canada

CFS CANADIAN FOREST SERVICE
SCF SERVICE CANADIEN DES FORÊTS
www.nrcan.gc.ca/forest

Mike Wulder
mike.wulder@pfc.cfs.nrcan.gc.ca
<http://cfs.nrcan.gc.ca/subsite/wulder/>

Joanne White
joanne.white@nrcan.gc.ca

Canada Natural Resources Canada / Ressources naturelles Canada
Canadian Forest Service / Service canadien des forêts

All EOSD LC 2000 data available for download, by tile, province, or UTM zone: <http://www4.safarah.org>

Natural Resources Canada / Ressources naturelles Canada