

## DOCUMENTATION CHALLENGES IN AN INTERNATIONAL AND INTERDISCIPLINARY RESEARCH PROJECT

K. Hanke\*, G. Hiebel, K. Kovacs, M. Moser

Surveying and Geoinformation Unit, Department of Civil Engineering Sciences  
University of Innsbruck, Technikerstrasse 13, A 6020 Innsbruck, Austria  
klaus.hanke@uibk.ac.at

Commission V, WG V/2

**KEY WORDS:** archaeology, GIS, photogrammetry, laser scanning, heritage documentation, mapping

### ABSTRACT:

Mining plays a very important role in the history of man. From the very beginning man's development has been accompanied by the extraction, processing and utilization of mineral substances. In the past, mining often exerted influence on economic, social, legal and cultural structures within society. The technological aspect must be emphasized as well, for the technical achievements in mining and metallurgy in combination with a far-reaching technology transfer were always an innovative and driving force - a motor of progress that has decisively influenced and furthered the development of a modern industrial society. The mining boom of the 15th/16th century in the Tyrol repeated a sequence which had already occurred with similar intensity and far-reaching consequences many centuries before. During the Bronze Age, between 2200 and 800 B.C., dynamic changes took place in the fields of mining and metallurgy in connection with alpine copper ore exploitation driven by the eager demand for crude copper on the newly established European metal market for bronze production. The all-time peak of copper mining was achieved with the formation of "early industrial" production structures in the Middle and Late Bronze Age. Alongside numerous further mining centres in the eastern and southern Alps the Tyrolean region still played a significant role. The existence of excellent preliminary studies of the historic mining activities in Schwaz conducted at the University of Innsbruck presents ideal prerequisites for researching the above-mentioned epochs from the Neolithic to the early Mediaeval Times, from which hardly anything is known. This article describes the cooperation of different scientific fields on this item and especially the role of surveying and geoinformation to integrate and support all these groups in their work to achieve that focused goal.



Fig.1: Documentation of a Bronze-Age mining facility at Mitterberg, Austria

## 1. BACKGROUND

The introduction of metallurgy into prehistoric Europe led to substantial changes in human culture and in the environment. In this context supra-regional producer landscapes for ores (e.g. copper) developed in the Eastern Alps in the 2nd and the early 1st millennium BC respectively. Thereby mining shows conformity in many technological aspects which exceeds single domains and reveals an area of communication and economy, which co-operates in a manner of its own, e. g. logistic concepts, exchange of experts. The long-lasting development of settlement in connection with mining let also assume the generation of similar subsistence strategies. These aspects can be studied in various mining districts in a variable way because of different primary data discriminated by different states of preservation.

The socio-economic and environmental reasons for the rise and fall of mining districts as well as its surroundings are manifold. Up to now none of the existing scenarios is validated by archaeological data, thus it is the objective of this special research program *History of Mining Activities in the Tyrol and Adjacent Areas - Impact on Environment and Human Societies (SFB HiMAT)* to evaluate and analyse these facts.

The development of mining as seen in a long term perspective is characterized by phases of expansion, consolidation and regression. This pattern is described and analysed in a mutual network by archaeologists, archaeo-metallurgists, archaeo-zoologists, dendrochronologists, ethnologists, historians, linguists, mineralogists and palaeo-ecologists in the course of concerted actions.

The research strategy envisages i) time-vertical studies dealing with changes in a long-term perspective as well as ii) time-horizontal studies dealing with selected periods of special importance for changes in society and landscape. Both study types are conducted in specific key areas in the course of a multi-disciplinary networking of researchers in mining of the University of Innsbruck and international experts in the field from the Universities of Basel, Frankfurt and Tübingen as well as the Deutsches Bergbau-Museum in Bochum.

This integral project is focused in Schwaz/Kitzbühel (Tyrol) connecting all project parts by mutual networking. Concrete interfaces are: to study the archaeology and palaeo-ecology of mining, the development of mining areas, compilation of technological standards, archaeo-metallurgical and provenience analyses. The mutual networking of the disciplines enables to evaluate the socio-economic and environmental constraints promoting the development of mining areas and mining landscapes. Additionally the design of a historical analogue for mining in multidisciplinary collaboration and mutual calibration with archaeologists, historians, linguists and palaeo-ecologists allows a better understanding of prehistoric mining and creating new methods to provide evidence for mining activities applicable in areas where archaeology of mining is unknown so far (Oeggel, 2006).

The Austrian Science Fund (FWF) decided to support this concept with a sum of over 3 Mio Euros for the first 4 years and after evaluation the program will continue up to an overall duration of 10 years. 70 scientists at the University of Innsbruck are now able to work together on these topics and 40 young scientists and PhD students can be additionally employed and trained in the various scientific fields.

## 2. ROLE OF SURVEYING AND GEOINFORMATION

Surveying and GIS have definitely to accompany the entire process of acquisition of both thematic as well as geometrical data throughout the whole duration of this special research program HiMAT.

The integration of such diverse sciences as archaeology, dendrochronology, botany, zoology, ethnology, onomastics (e.g. family names and topographic names), medieval history, metallurgy and geology requires cartographic and GIS based support for their interaction and subsequent data fusion.

### 2.1 Archaeological prospection

Before the excavation starts, surveying of the topography of the genuine surface will be necessary. The archaeological applications of airborne laser scanning (LIDAR) so far showed that it is extremely useful to detect archaeological sites showing in relief.

Various authors demonstrate that using LIDAR helped to depict micro-topographic details in shaded relief, which are hardly detectable and not comprehensible when surveying terrestrially. Recent publications examined the possibility to survey sites in relief even under dense vegetation.

The latest generation of full-waveform recording airborne LIDAR scanners seem to be extremely useful to detect previously unknown sites (Doneus, Briese 2006).

As the provinces of Tyrol and Vorarlberg both decided to have area-wide LIDAR-based DTM and DSM for their own various governmental applications, these data were thankworthy available to our project too. So we are glad to use these area-wide 3D data for prospection purposes within SFB HiMAT to hopefully detect new mining related archaeological sites.

Together with the local authorities of Salzburg, Austria and the Deutsches Bergbaumuseum Bochum, Germany we also initiated a special LIDAR flight in the Bischofshofen/Mitterberg area with a high point density of 16 points per m<sup>2</sup>. Figure 2 shows prehistoric mining traces in the DTM after a first draft data evaluation. The archaeological analysis of resulting micro-topography will be the basis for further prospection and excavations at the site.

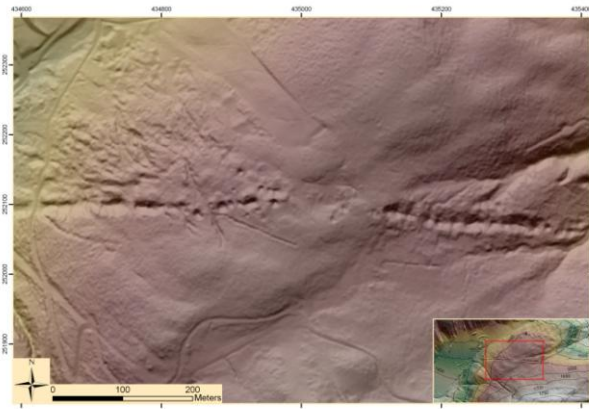


Fig.2: LIDAR of Mitterberg area with visible mining traces

## 2.2 Documentation

Following the excavation progress, the area will be measured in layers, thus delivering the detailed surface referring to the different excavation epochs. Surveying methods are well known and proofed in context with archaeological excavations. Terrestrial laser scanner technology (TLS) widens the use and usefulness of this task. One of the direct advantages of laser scanning is that it can be applied in almost any archaeological environment where 3D recording is desirable due to the complexity or large size of the feature. Geodetic data from tacheometry, photogrammetry and laser scanning must be combined and edited in order to be able to yield results, being indispensable for further processing. This guarantees that the process of archaeological excavation can be documented permanently and objectively.

It is obvious that 3D models of the excavation and a 3D assembling of the results of different surveying-periods (excavation-layers) make archaeological interpretation much easier (Schaich 2002).



Fig 3: Textured 3D model of excavation in Mauk F, Brixlegg

The finds are registered three-dimensionally online in the reference-system documenting the horizontal situation as well as the relation to the vertical, an epoch-connected layer-structure.

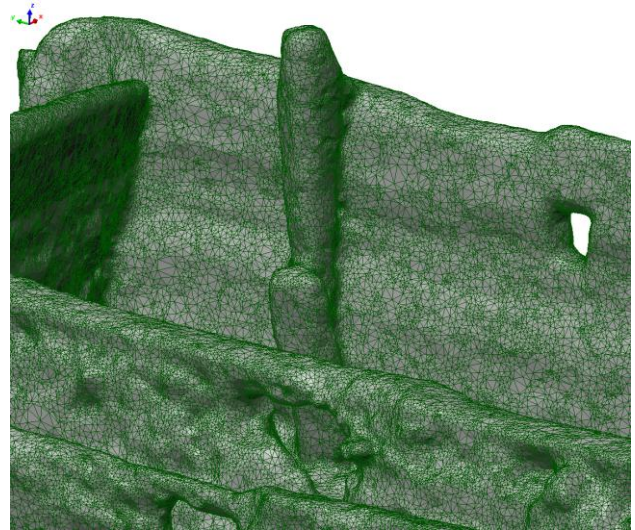


Fig. 4: Detail of 3D model of the prehistoric wooden chest with triangulation of scanned points.

The laser scanning technique enables comprehensive and reliable 3D records of existing conditions that describe a feature exactly as it was at the time of surveying and thereby ensure optimal and objective preservation of evidence.

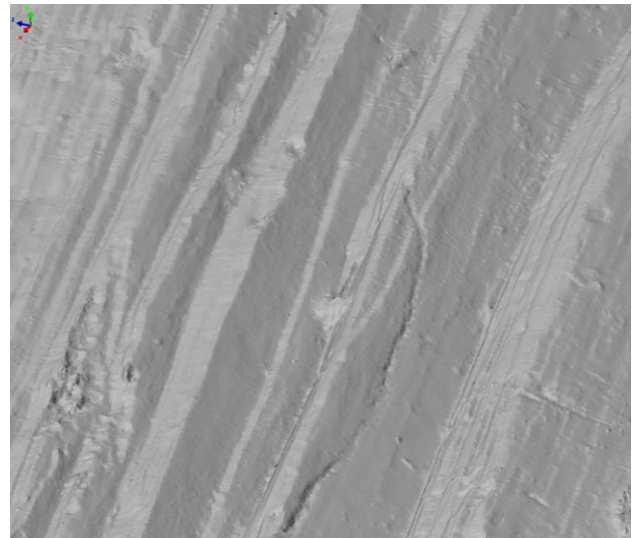


Fig 5: Detail of the scan of the wooden surface showing prehistoric manufacturing traces, resolution 0.2mm

The technique is well suited to the fields of archaeology and heritage where complex, amorphous objects often must be recorded. Otherwise surveying under these circumstances can be extremely difficult.

Although large and complex areas can be recorded in a very short time using this procedure, it should be noted that the post-processing of the resulting data takes much longer than the duration of the surveying process itself (Doneus et al, 2003, 2005, 2006).



### 2.3 Database management and GIS

All data resulting from the above mentioned measurement works have finally to be prepared as input to a geoinformation system (GIS).

Assembling such a GIS is necessary to store and administrate all resulting (georeferenced) data. From recording to editing, analysis and presentation of data the system should offer all wanted functionality to all participating groups. Geoinformation systems are "state of the art" for administration of large datasets with spatial reference. Off-shelf systems have been already used successfully for certain well-defined fields like communal (local) information systems, channel information systems and line-IS for several years.

When requirements to a GIS come from such different directions as in the SFB HiMAT, this will necessarily lead to a development of tools specialized to fulfil the specific task. Scientific work is done in this field worldwide but always only aligned to a certain well-defined purpose.

So one of the first tasks was to set up a Thesaurus to guarantee a homogeneity of words, descriptions and use of descriptives as it showed very soon that all of our colleagues use different wordings for similar and equal facts and homogenisation of this items was a "conditio sine qua non", a substantial requirement, for further data processing and data fusion. A common data base would never succeed without a common language. So all colleagues from all different fields such as humanities, natural sciences and technical sciences will work on this problem, which – in all consequences - has not been obvious to all groups before.

The consequent storing of all produced data in connection with metadata describing the data content, was another consequence of this broad cooperation. Items that were absolutely clear inside a group proved to be totally misunderstanding for even close related sciences. So even between the 4 archaeological groups this harmonisation was indispensable.

In close cooperation with Bundesdenkmalamt Tirol (Bodenarchivar) and the Institute of Archaeologies several documentations of finds and excavations have been made and its possibilities for archiving and graphical presentation have been tested and realized during the last years (e.g. Hanke 2000).

Data fusion und complex analyses will nevertheless be the target of all these efforts. On the other hand simple viewers at the system's lower end do not support complex analysis, but they are optimal suited for representing complex facts. At the end of the SFB a fully integrated "HiMAT-GIS" could be available, which would be able to provide georeferenced and linked access to all data of all groups for the future.

### 3. CONCLUSION

The contribution of surveying, photogrammetry and GIS to such an interdisciplinary research program is a really challenging task and requires the whole palette of skills and tools available in this profession. The forthcoming of the entire project can be followed up at the HiMAT website: <http://himat.uibk.ac.at/>

### ACKNOWLEDGEMENT

The work is generously supported by the Austrian Science Fund (FWF Project F3114) in the framework of the Special Research Program (SFB) "HiMAT" as well as by the province governments of Tyrol, Vorarlberg, Salzburg and the Autonomous Province Bozen-South Tyrol, Italy, TransIDEE, the University of Innsbruck and corresponding communities, organizations and companies.

### REFERENCES

- Boehler, W. and G. Heinz, 1999: "Documentation, Surveying, Photogrammetry." XVII CIPA International Symposium. Recife, Brazil, Proceedings (CD-ROM).
- Doneus M. & Neubauer, W. & Studnicka N. 2003: Digital Recording of Stratigraphic Excavations. In: *Proceedings of the XIXth International Symposium CIPA 2003 "New Perspectives to Save Cultural Heritage"*. The CIPA Int. Archives for Documentation of Cultural Heritage, Vol. XIX, 2003, 451 – 456.
- Doneus M., Neubauer W., 2005: 3D laser scanners on archaeological excavations. In: Dequal S.: (Ed.) *Proceedings of the XXth International Symposium CIPA, Torino 2005*. The International Archives of Photogrammetry, Remote Sensing and Spatial Information Sciences, Vol. XXXVI-5/C34/1, 2005, 226-231.
- Doneus, M., Briese, C., 2006: Digital terrain modelling for archaeological interpretation within forested areas using full-waveform laser scanning. In: M. Ioannides, D. Arnold, F. Niccolucci and K. Mania (Editors), *The 7th International Symposium on VirtualReality, Archaeology and Cultural Heritage VAST (2006)*.
- Georgius Agricola: *De re metallica libri XII*, Basel 1556.
- Grussenmeyer, P. und Hanke, K. (2010): Chapter 8. Cultural Heritage Applications. In: George Vosselman (Hrsg.): *"Airborne and Terrestrial Laser Scanning."* Whittles Publishing ISBN-10: 190444587X ISBN-13: 978-1904445876
- Hanke K. 2000: The photogrammetric contribution to archaeological documentation of prehistory. In: *Proceedings of the ISPRS Congress in Amsterdam, NL*. International Archives of Photogrammetry and Remote Sensing Vol. XXXIII Part 5.
- Hanke K., Hiebel G., Kovacs K., Moser M. 2009: Surveying and Geoinformation - Contributions to an Interdisciplinary Special Research Program on the History of Mining Activities. In: *Proceedings of the 22nd CIPA Symposium, October 11-15, 2009, Kyoto, Japan*. The ISPRS International Archives of Photogrammetry, Remote Sensing and Spatial Information Sciences and The CIPA International Archives for Documentation of Cultural Heritage Vol. XXII (ISSN 2076-7730)
- Hiebel, G.; Hanke, K., 2010: Concept for an Ontology Based Web GIS Information System for HiMAT. In: Jerem, Erzsébet; Redő, Ferenc; Szeverényi, Vajk (Hrsg.): *On the Road to Reconstructing the Past*; Proceedings CAA 2008 Budapest, Hungary. 36th Annual Conference on Computer Applications and Quantitative Methods in Archaeology; Budapest, 2-6 April 2008. Eigenverlag - CAA 2008.

Oeggel, K. 2006: The History of Mining Activities in the Tyrol: Impact on Environment and Human Societies. Proposal for a special research program to the Austrian Science Fund (FWF). University Press Innsbruck.

Patias, P.; Grussenmeyer, P.; Hanke, K. (2008): Applications in Cultural Heritage Documentation. In: Li, Zhilin Chen; Baltsavias, Manos (Hrsg.): *“Advances in Photogrammetry, Remote Sensing and Spatial Information Sciences”*. Taylor & Francis Group, London, pp. 363 - 383.

Schaich, M. 2002: Computergestützte Grabungsdokumentation im Netzwerk aus elektronischer Vermessung, Fotogrammetrie, CAD und Datenbanken in: W. Börner (ed.), *Tagungsberichte Workshop Archäologie und Computer, Wien 2000*.