

GLOBAL CHANGE OBSERVATION MISSION - CLIMATE (GCOM-C)

T. Igarashi

JAXA, Earth Observation Research Center, 2-1-1 Sengen Tsukuba Ibaraki 305-8505, Japan -
igarashi.tamotsu@jaxa.jp

Commission VIII, JAXA Special Session

KEY WORDS: Satellite Remote Sensing, Global Change Observation Mission (GCOM), Second-generation Global Imager (SGLI)

ABSTRACT:

Global Change Observation Mission - Climate (GCOM-C) is the satellite remote sensing mission of global earth observation required for the reduction of uncertainty in the knowledge about global change induced by climate change with water, energy and material cycles. For this objective, satellite remote sensing by enhanced sensor and its continuous observation over one decade will be the first challenge for JAXA with science and operational users. Therefore GCOM-C will be composed with satellite series of GCOM-C1, 2, 3, basically accommodating Second-generation Global Imager (SGLI) for the comprehensive and consistent time series data sets describing each spherical process and interaction between climate systems in region to global scale. The first satellite GCOM-C1 is under development for the launch in JFY2014. SGLI onboard GCOM-C1 is a medium resolution spectral-radiometer, the successor to GLI onboard ADEOS-II, OCTS onboard ADEOS and VTIR onboard MOS-1/1b. This presentation describes the overview of GCOM-C mission, the satellite and the data sets for the reduction of uncertainty of the climate change process, and for the expected contribution to the adequate assessment, adaptation and mitigation on the impacts from climate change.

1. INTRODUCTION

Global Change Observation Mission – Climate 1 (GCOM-C1, Figure 1) is the first satellite of GCOM-C satellite series which will be launched in JFY2014, to implement Global Change Observation Mission (GCOM), accompanied with GCOM-W1 which will be launched in JFY2011 as the first satellite of another satellite series of Global Change Observation Mission - Water (GCOM-W). GCOM is a mission of earth observation for the monitoring climate change and environmental change, and also operational use such as numerical weather forecast, fishery information service, which has been demonstrated, and validated using OCTS on ADEOS in 1997-98, GLI and AMSR on ADEOS-II in 2002-03, AMSR-E onboard Aqua from 2002 data sets. GCOM is composed with the following objectives.

1. Construction and validation of system for global and long-term earth observation to produce geophysical parameters essential for the elucidation of climate change and water cycle mechanism. The long-term observation of vegetation, cloud and aerosol, etc. is expected to be derived from GCOM-C1 data.
2. Data processing and dissemination for the dedicated integrated data use with ground-based observation data and models.
3. Contribution for the improvement of prediction accuracy by climate change process study and climate change model improvement for the decision making of governmental measures, in cooperation with numerical climate model development and user organizations.
4. Data dissemination for operational user's organization of meteorological disaster mitigation by contribution for improvement of weather forecast, fishery information service, maritime routing information. GCOM-C1 is expected to be operationally used to produce information for fishery and ship routine.

5. Encouraging data analysis science and technology to produce new products effective for the elucidation of climate change and water cycle mechanism.

JAXA is conducting application research of satellite data from GCOM, by developing data processing and analysis algorithms, calibration of sensors, validation of products, and various applications with research community, operational user's organizations and general users, based on the heritage obtained in former projects of ADEOS-II and other satellites. As the future climate change and earth environmental observation satellite programs, there are Global Precipitation Mission (GPM) and Earth - Cloud, Aerosol, Radiation Experiment (EarthCARE) which will be launched in JFY2013. These satellites will provide comprehensive data sets integrated with GCOM-C1 and W1, as the contribution to Global Earth Observation System of Systems (GEOSS) from Japan.

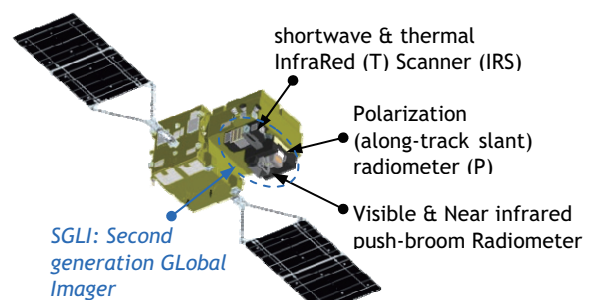


Figure 1. GCOM-C1

Orbit	Sun-synchronous (descending local time: 10:30) Altitude: 798km, Inclination: 98.6deg
Launch Date	JFY2014 (HII-A)
Mission Life	5 years (3 satellites; total 13 years)
Scan	Push-broom electric scan (VNR: VN & P) Wisk-broom mechanical scan (IRS: SW & T)
Scan width	1150km cross track (VNR: VN & P) 1400km cross track (IRS: SW & T)
Digitalization	12bit
Polarization	3 polarization angles for P
Along track direction	Nadir for VN, SW and T, +45 deg and -45 deg for P
On-board calibration	VN: Solar diffuser, Internal lamp (PD), Lunar by pitch maneuvers, and dark current by masked pixels and nighttime observation SW: Solar diffuser, Internal lamp, Lunar, and dark current by deep space window T: Black body and dark current by deep space window All: Electric calibration

Table 1. GCOM-C1 and SGLI characteristics

2. GCOM-C1 AND SGLI

2.1 GCOM-C1

GCOM satellites are polar orbiting satellites (Table 1), with very short revisit period of 1 to 3 days depending on the latitude, so that we can get changing environment frequently as daily, monthly, seasonally and yearly. Polar orbiting satellite is inherently observing globally, therefore regional observation data is available for users around the world. The spatial resolution of SGLI onboard GCOM-C1 is 250m which is relatively high among the global observation satellites. Therefore they have potential to monitor the global environmental changes in global, continental, and regional scales, and to contribute to understanding of interconnectedness between regions. GCOM-C (climate) satellite series #1~3 (early 2014 ~, 13 years) as well as GCOM-W (water) satellite series #1~3 (Nov. 2011 ~, 13 years)

2.2 SGLI

GCOM-C will carry Second-generation Global Imager (SGLI) which is a radiometer having sensitivity in 380-12000nm wavelength from near-ultra violet to thermal infrared region, 1150-1400km swath width, and is operated in polar orbit with descending local time 10:30am, as a follow-on mission of ADEOS-II/GLI (Figure 2, Table 2). SGLI has some specific features that are higher resolution as a global sensor; 250m-spatial resolution (500m for thermal infrared), and polarization/along-track slant viewing channels (in red and near-infrared spectral region), which will improve information about coastal ocean, land, and aerosol observations. SGLI will observe aerosols, cloud, vegetation, ocean color, sea and land surface temperature, snow and ice, and so on for more than 13 years.

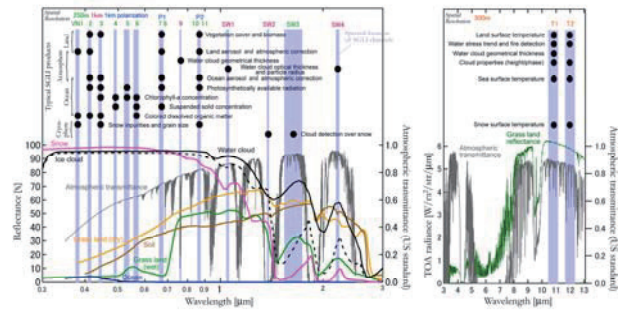


Figure 2. SGLI spectral channels

CH	λ	$\Delta\lambda$	Lstd	Lmax	SNR at Lstd	IFOV
	VN, P, SW: nm T: μm		VN, P: W/m ² /sr/ μm T: Kelvin		VN, P, SW: - T: NEAT	m
VN1	380	10	60	210	250	250
VN2	412	10	75	250	400	250
VN3	443	10	64	400	300	250
VN4	490	10	53	120	400	250
VN5	530	20	41	350	250	250
VN6	565	20	33	90	400	250
VN7	670	10	23	62	400	250
VN8	670	20	25	210	250	250
VN9	763	8	40	350	400	1000
VN10	865	20	8	30	400	250
VN11	865	20	30	300	200	250
P1	670	20	25	250	250	1000
P2	865	20	30	300	250	1000
SW1	1050	20	57	248	500	1000
SW2	1380	20	8	103	150	1000
SW3	1640	200	3	50	57	250
SW4	2210	50	1.9	20	211	1000
T1	10.8	0.7	300	340	0.2	500
T2	12.0	0.7	300	340	0.2	500

Table 2. SGLI channels and basic characteristics

For every purpose of data use, improvement of satellite product accuracy and maintain good data quality is still the most essential research work of JAXA as the GCOM data provider as well as system developer. As our concrete idea to solve above issues, improvement of in-water algorithms of complicated substance composition (e.g., coastal area) is a challenge, and for this combination with bio-physical-optical model will be the most essential issue. Adding to this, also we need improvement of atmospheric correction (extraction of the water-leaving signals) in conditions of much suspended matter, whitecaps, sun glint and irregular aerosols including absorptive aerosols is supposed to be an issue to be solved. Especially, the mission focuses on the carbon cycle and radiation budget, and will consist of three generation satellites for 13 years from early 2014 to contribute to tracking and detection of the "global change". Therefore, Long-term/inter-sensor continuity and consistency, and maintaining high sensor performance with good enough signal to noise ratio by using perfect sensor calibration model.

3. MISSION CONCEPT

3.1 Mission Goal

GCOM will be maintained toward the final mission goal which should be accomplished by the end of 13 year observation, processing and analysis and application research period, as the followings.

1. The establishment of long-term observation system for the global carbon cycle and radiation budget, integrated with other earth observation systems.
2. Contribution to numerical climate models (driving force, outputs comparison, and parameter tuning).
3. Contribution to operational use (weather forecast, monitoring of meteorological disaster, fishery..).
4. Enhancement of new satellite data usability.

3.2 Cloud and Aerosol Roles in the Radiation Budget

In recent years, the global warming is emerging as the social common concern worldwide as well as science and technology challenges. For the understanding of future trend prediction of the climate change, the most significant factor of global warming is the atmospheric CO₂ concentration, as discussed in the IPCC report. However, the most significant uncertainty of radiative forcing is direct/indirect role of cloud-aerosol system. Therefore, monitoring and process investigation about cloud and aerosol by GCOM-C & EarthCARE is proposed to be explored (Figure 3).

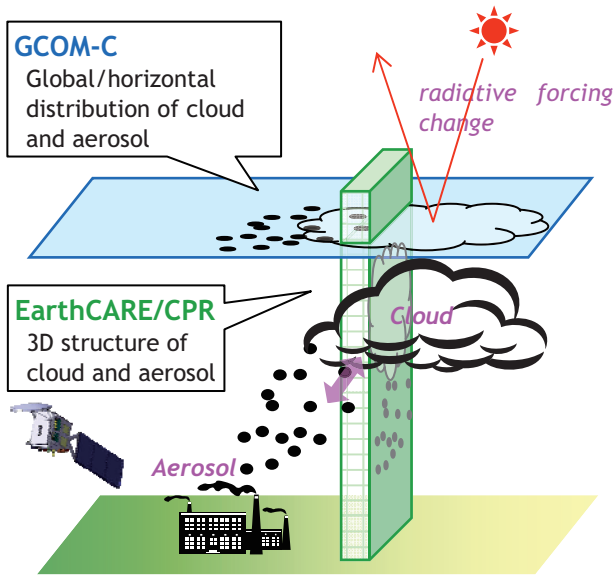


Figure 3. Observation by GCOM-C and EarthCARE to retrieve cloud and aerosol in horizontal and vertical distribution

3.3 Carbon Budget at Present and Future

The expected contribution by GCOM-C is process investigation and long-term diagnosis with model for the carbon budget. At present, carbon flux is estimated as shown in Figure 4, and parameters in Figure 5 are necessary for the future.

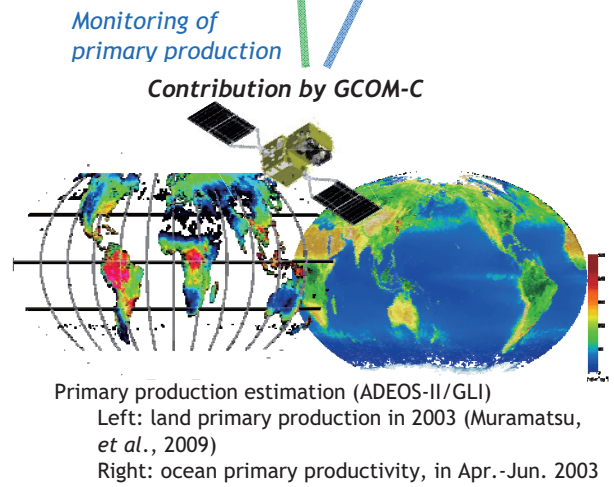
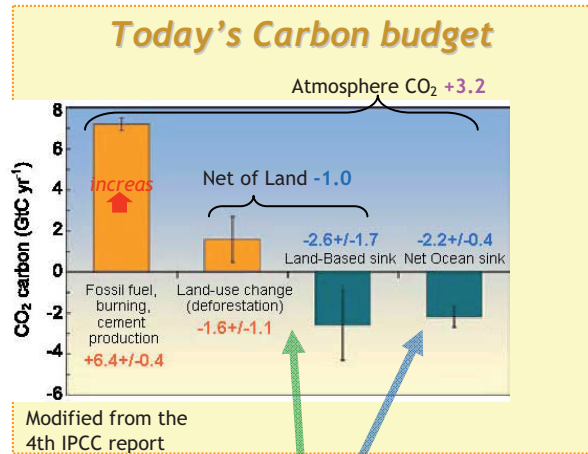


Figure 4 Expected contributions by GCOM-C to reduce uncertainty in the carbon budget estimation at present

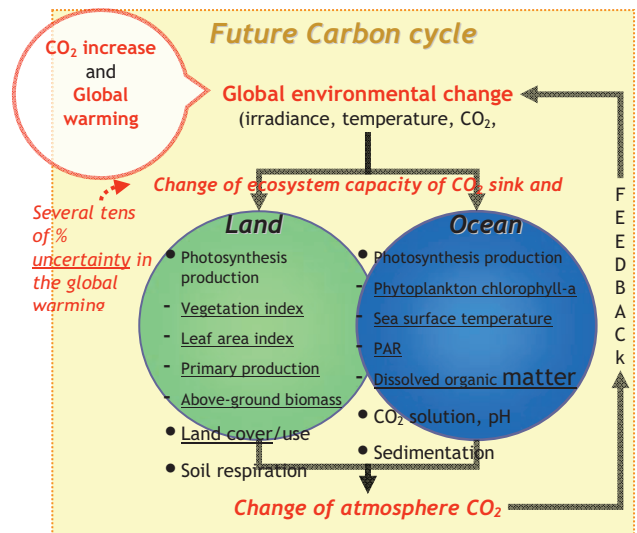


Figure 5 Expected contributions by GCOM-C to reduce uncertainty in the carbon budget estimation in the future

4. GCOM-C PRODUCTS

4.1 Aerosol

Land aerosol by Near-UV and polarization will produce more valuable information as shown in Figure 6, 7.

1. Not only over the ocean, SGLI will estimate land-area aerosols using near-UV (380nm) and polarization channels which are more sensitive to the atmospheric scattering rather than the land surface reflection.
2. Combination of aerosol absorption by Near-UV and fine-mode aerosol properties by polarization.

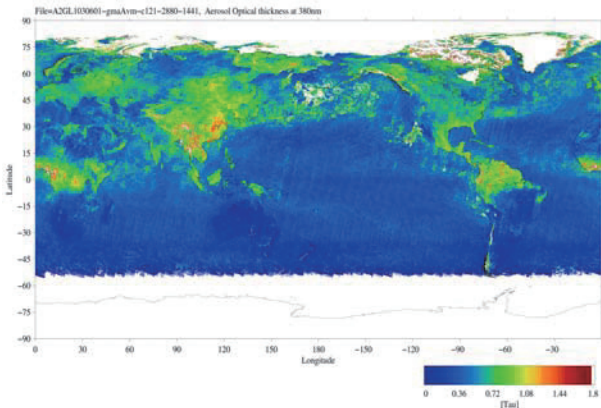


Figure 6. Global aerosol optical thickness in June 2003 using the GLI Near-UV (380nm) channel (NIR for the ocean area)

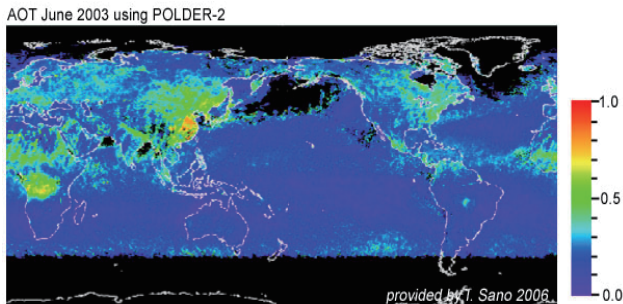


Figure 7. Global aerosol optical thickness in June 2003 using POLDER-2 polarization reflectance

4.2 Ocean

SGLI VNR, 250m resolution image will enable to detect more fine structures in the coastal area such as river outflows, regional blooms, and small currents (Figure 8).

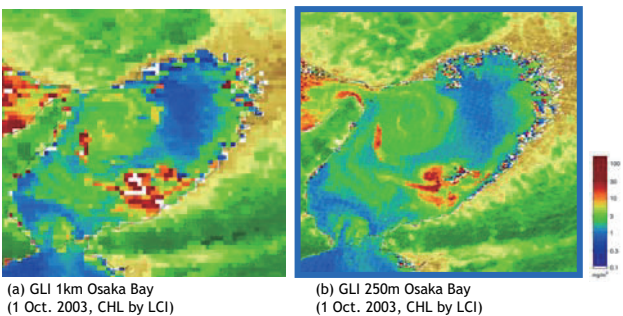


Figure 8. 250m Ocean color chlorophyll-a and NDVI simulated using GLI 250m channels

4.3 Land

SGLI has directional observation function for the land cover classification and the biomass estimation (Figure 9, 10). Reflectance changes depending on the observation angles.

1. By using reflectance change of slant and nadir observations, vertical structure of trees can be estimated (e.g., difference between a paddy field and a forest).
2. The information is useful for land cover classification and above-ground biomass estimation.

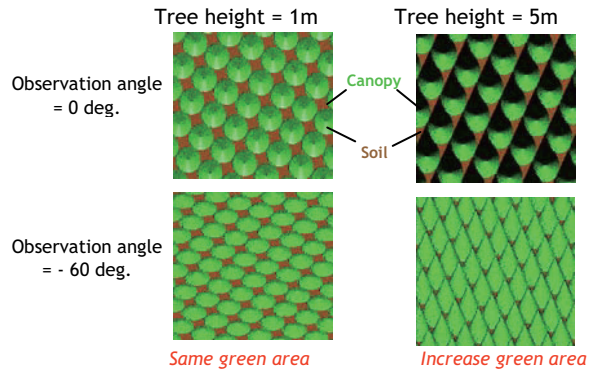
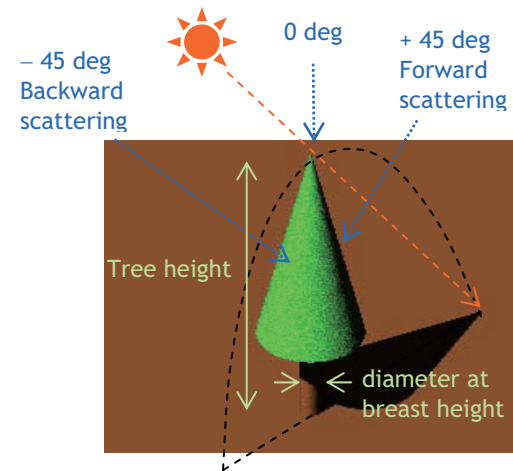


Figure 9. 250m Ocean color chlorophyll-a and NDVI simulated using GLI 250m channels



Vegetation model (Arboreal vegetation)
Provided by Honda Lab. Chiba Univ.

Figure 10. SGLI directional observation

4.4 Cryosphere

Snow property in large scale area changes in the global warming. In this process, ice-albedo feedback is one of the feedback processes to accelerate global warming, especially in the early phase, and snow grain size can be an early indicator of the global warming (Figure 11, 12).

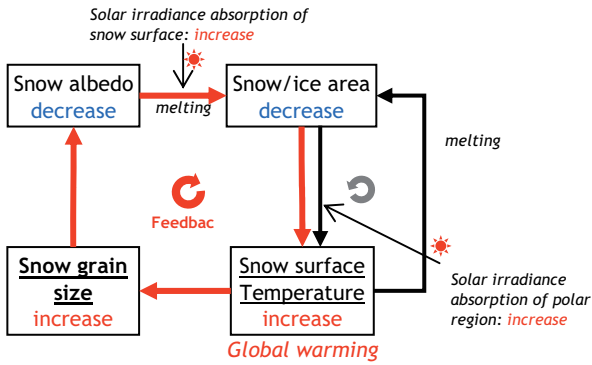


Figure 11. Conceptual image of ice albedo feedback

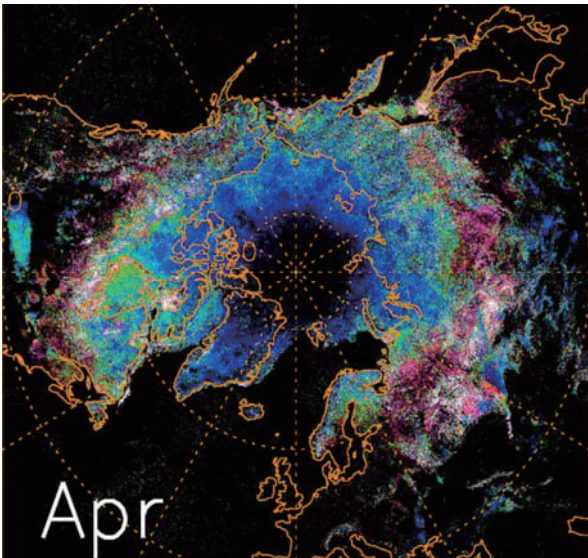


Figure 12. Snow grain sizes in shallow layer retrieved from GLI data in April, 2003

5. APPLICATIONS

Long-term observation can provide time series trend data sets and they can be compared year to year to find anomaly. Figure 13 shows Normalized Difference Vegetation Index (NDVI) average value in the area enclosed with a black line in the Eastern Australia grain zone in Figure 13, 14.

1. Time series of NDVI shows vegetation damage by drought in 2002 and 2006, when the wheat crop yields was reduced by about half in those years.
2. GCOM long-term observation will be effective to detect environmental anomaly such as the drought.

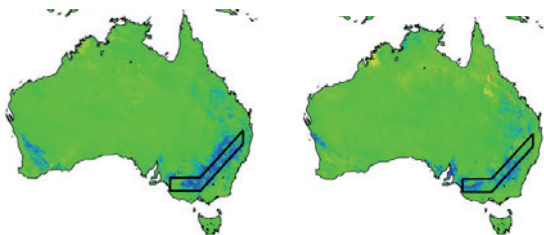


Figure 13. NDVI anomaly in 2002 the 4th season (left) and in 2006 the 4th season (right)

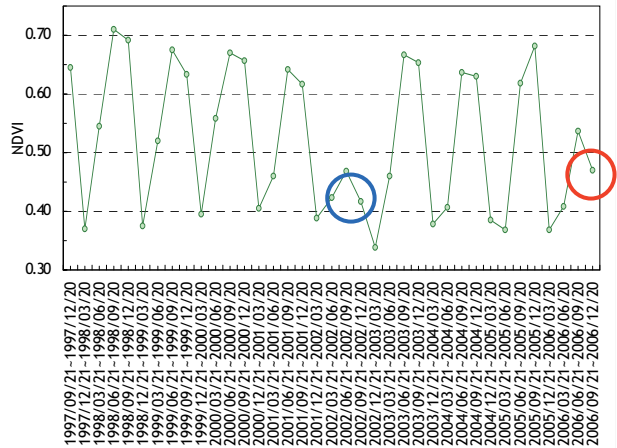


Figure 14. Vegetation index in the Eastern Australia grain zone for every season using SeaWiFS product (Circles show anomalies)

6. INTERNATIONAL COOPERATION

Global earth observation satellites and polar orbiting meteorological satellites are complementally used by both environmental and meteorological users. As shown in Table 3, visible/infrared imagers are planned to be operated by European METOP A-D and Aentinel-3A, 3B in morning orbit and NPP and JPSS series in afternoon orbit will be useful for the improvement of observation frequency to sample diurnal variations of environment. GCOM-C with its advanced measurement function and high performance will contribute not only to the international global observation system, such as GEOSS, CEOS consternation, by using common functions, but also to the high resolution land and coastal observation, land aerosol, and biomass estimation. Especially, SGLI has 250m spatial-resolution, near-UV, multi-angle, and polarization observations suitable for areas having long coast lines, bordering on rapidly developing industrial areas like Japan. Comparison of characteristics, function and performances of major global optical sensors; GCOM-C/SGLI, NPP, JPSS/VIIRS, MODIS, Sentinel/OLCI, SLST, MERIS+AATSr are summarized in Table 4.

LTAN/LTDN	05	06	07	08	09	10	11	12	13	14	15	16	17	18	19	20	21	22	23	24	25				
J	GCOM-C1 SGLI, GCOM-C2 SGLI, GCOM-C3 SGLI																								
J	DMSP-F16, DMSP-F18, SSMIS																								
U	AVHRR, NOAA-M, MODIS																								
U	Terra																								
E	METOP A AVHRR2, METOP B AVHRR3, METOP C AVHRR3, METOP D AVHRR3+, Sentinel-3A OLCI, SLST, Sentinel-3B																								
J	Aqua AMSR-E, GCOM-W1 AMSR2, GCOM-W2 AMSR2, GCOM-W3 AMSR2																								
J	NOAA-N AVHRR3, NOAA-N AVHRR3, JPSS																								
U	Aqua MODIS, NPP VIIRS, JPSS VIIRS, MIS																								
E																									
Passive Microwave Radiometer												Visible/Infrared Imager													
Sensor: AR-JPSSMETOP/GCOM												Sensor: AR-JPSSMETOP/GCOM													
Sensor: Pre-JPSSMETOP/GCOM												Sensor: Pre-JPSSMETOP/GCOM													

Table 3. Cooperation with operational satellites

GCOM-C / SGLI	NPP, JPSS / VIIRS, MODIS	Sentinel/ OLCI+SLST, MERIS+AATS
Visible to thermal infrared global observation (19ch)	Visible to thermal infrared global observation (27ch:MODIS:36ch)	Visible to thermal infrared global observation (~25ch by two sensors)
250m resolution (11ch)	370m (5ch)	300-500m resolution
Near-UV		
Polarimetry		
Multi-angle obs. (2ch)		Many multi-angle obs. (~9ch) for precise SST/LST estimation
Thermal infrared (2ch)	Many thermal channels (7ch) for fire/night time obs.	Thermal infrared (3ch)
FOV 1150-1400km	Wide FOV ~3000km	FOV-1200km

Table 4. Comparison of global optical sensors

7. CONCLUSIONS

1. JAXA is establishing the GCOM-C satellite series, which will be launched in JFY2014 and it will encourage Japanese ocean-color, global atmosphere, land, cryosphere remote sensing again, after the blank of our own data sets since the end of GLI operation in 2003.
2. Goals of GCOM-C research are followings;
 - Establishment of long-term observation system for the global carbon cycle and radiation budget.
 - Integrated use with other earth observation systems.
 - Contribution to numerical climate models (driving force, outputs comparison, and parameter tuning).
 - Contribution to operational use (weather forecast, monitoring of meteorological disaster, fishery, etc.).
 - Enhancement of new satellite data usability.
3. They will also contribute to the implementation plan and the goal of GEOSS, as the Japanese initiative program.

REFERENCES

- Kameda, T., Ishizaka, J., 2005. Size-Fractionated Primary Production Estimated by a Two-Phytoplankton Community Model Applicable to Ocean Color Remote Sensing, *Journal of Oceanography*, 61(4), pp.663-672.
- Muramatsu, K., Furumi, S., Chen, L., Xiong, Y., Daigo, M., 2009. Estimating and Validating the Net Primary Production of Vegetation using ADEOS-II/GLI Global Mosaic and 250-m Spatial Resolution Data. *Journal of The Remote Sensing Society of Japan*, 29(1), pp. 114-123.
- Nakajima, T., Murakami, H., Hori, M., Nakajima, T.Y., Yamamoto, H., Ishizaka, J., Tateishi, R., Aoki, T., Takamura, T., Kuji, M., Nguyen, D.D., Ono, A., Fukuda, S., Muramatsu, K., 2009. Overview and Science Highlights of the ADEOS-II/GLI Project. *Journal of The Remote Sensing Society of Japan*, 29(1), pp. 11-28.

ACKNOWLEDGEMENTS

I thank Haruhisa Shimoda for his chair of GCOM science advisory board of leading scientists and representatives from operational user organizations provided with a broad overview of GCOM concept that would have been difficult to achieve in any other way. I also thank Yoshiaki Honda for leading GCOM-C science team of Principal Investigators provided with an original science plan for the next generation of satellite remote sensing of the climate change. Keizo Nakagawa and Kazuhiro Tanaka provided updated GCOM project and satellite and sensor system engineering information. JMA, NOAA and EUMETSAT provided many ideas of possibility in climate applications and international cooperation which will be very useful to encourage operational use of GCOM data to the climate information services as well as meteorological services. NIES, JAMSTEC and JAXA started discussion on ecosystem and cooperation between observation and model, and CEOS ocean color consternation with space agencies is approved to progress toward the implementation. Hiroshi Murakami, Masayuki Hori, Akiko Ono provided useful discussions about the material presented here, especially on new features of remote sensing technology of GCOM-C/SGLI to implement new user requirements and improve unaccomplished measurement function and performance by ADEOS-II/GLI and other old and new similar projects.