

Other News

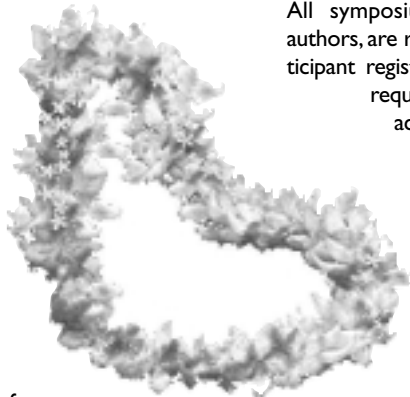
The 30th International Symposium on Remote Sensing of Environment

By Lillian Shimoda, East West Centre,
E-mail: shimodal@eastwestcenter.org

The 30th International Symposium on Remote Sensing of Environment will be held in Honolulu, Hawaii, 10-14 November 2003, at the Sheraton Waikiki Beach Resort located on the beautiful shores of Waikiki with Diamond Head as a backdrop.

This event is dedicated to the Remote Sensing of Environment focusing on Information for Risk Management and Sustainability Development. The overall theme is the use of Earth observation systems in understanding and managing our planet's environment with particular emphasis on natural hazards and sustainability.

The four main categories are: Hazards & Disasters, Global Change, Natural Resources, and Technology & Infrastructure. Oral presentations and poster sessions will address



one or more of the following themes:

1. Science, phenomenology and integrated observations
2. Applications and decision support tools
3. Socio/economic impacts and benefits as they relate to sustainable development

All symposium participants, including speakers/authors, are required to register and pay the full participant registration fee. Symposium badges will be required for all activities. Full payment must accompany registrations. You may register online at <http://isrse.arid.arizona.edu/registration.asp>

A full slate of educational and informative workshops are being planned for the weekend (8-9 November 2003) immediately preceding the Symposium. Also, several field trips, both on Oahu and on the neighbouring islands, are being planned for the weekend (15-16 November 2003) following the Symposium.

Sign up for an opportunity to be an exhibitor. Exhibit space will be sold on a first-come-first-served basis. A limited number of booths will be made available so don't delay your decision.

Thursday November 10, 2003				Wednesday November 12, 2003				Thursday November 13, 2003				Friday November 14, 2003			
Hazards & Disasters Plenary Session 9:00-10:00 a.m.				Global Change Plenary Session 9:00-10:00 a.m.				Natural Resources Plenary Session 9:00-10:00 a.m.				Space Agency Panel Discussion 9:00-10:00 a.m.			
Poster Session 10:00-10:30 a.m.				Poster Session 10:00-10:30 a.m.				Poster Session 10:00-10:30 a.m.				Break 10:00-10:30 a.m.			
WS 5 Risk Assessment 10:30 a.m. - 12:00 p.m.	WS 3 Disasters 10:30 a.m. - 12:00 p.m.	WS 1 Hazard & Risk 10:30 a.m. - 12:00 p.m.	WS 1 GIS Technology & Policy 10:30 a.m. - 12:00 p.m.	WS 5 Forest 10:30 a.m. - 12:00 p.m.	WS 3 Coastal Processes 10:30 a.m. - 12:00 p.m.	WS 5 Global Trends 10:30 a.m. - 12:00 p.m.	WS 1 Education, Training & Adaptation 10:30 a.m. - 12:00 p.m.	WS 5 Transition from Research to Operations 10:30 a.m. - 12:00 p.m.	WS 3 Imaging Earth Systems 10:30 a.m. - 12:00 p.m.	WS 5 Application I 10:30 a.m. - 12:00 p.m.	WS 3 Data Systems & Management 10:30 a.m. - 12:00 p.m.	WS 1 Public Health 10:30 a.m. - 12:00 p.m.	WS 1 Biologically 10:30 a.m. - 12:00 p.m.	WS 1 Ground Water Quality & Management 10:30 a.m. - 12:00 p.m.	WS 1 Fluvial & Deltaic 10:30 a.m. - 12:00 p.m.
Lunch 12:00-1:30 p.m.				Lunch 12:00-1:30 p.m.				Lunch 12:00-1:30 p.m.				Lunch 12:00-1:30 p.m.			
WS 4 Ecosystems 1:30-3:00 p.m.	WS 4 Climate 1:30-3:00 p.m.	WS 4 Coastal Zone 1:30-3:00 p.m.	WS 4 Remote Sensing Data 1:30-3:00 p.m.	WS 7 Hazard Risk & Policy 1:30-3:00 p.m.	WS 7 Biogeochem- ical Cycles 1:30-3:00 p.m.	WS 7 Ground Water Quality & Management 1:30-3:00 p.m.	WS 7 Data Processing & Policy 1:30-3:00 p.m.	WS 5 Assessment & Sustainability 1:30-3:00 p.m.	WS 5 Remote Sens- ing / Decision Support 1:30-3:00 p.m.	WS 5 Space Agency Follow-up to 14-16-03 Symposium 1:30-3:00 p.m.	WS 5 Fluvial & Deltaic 1:30-3:00 p.m.	WS 1 Climate Management & Sustainability 1:30-3:00 p.m.	WS 1 Coastal Zone 1:30-3:00 p.m.	WS 1 Land Use 1:30-3:00 p.m.	WS 1 Fluvial & Deltaic 1:30-3:00 p.m.
Poster Session 3:00-5:30 p.m.				Poster Session 3:00-5:30 p.m.				Poster Session 3:00-5:30 p.m.				Poster Session 3:00-5:30 p.m.			
WS 5 OR Supply 3:30-5:00 p.m.	WS 3 Forest & 1:30-3:00 p.m.	WS 3 Hazard & Risk 1:30-3:00 p.m.	WS 1 Data Processing & Policy 1:30-3:00 p.m.	WS 5 Landscape 1:30-3:00 p.m.	WS 5 Biogeochem- ical Cycles 1:30-3:00 p.m.	WS 5 Ground Water Quality & Management 1:30-3:00 p.m.	WS 5 Data Processing & Policy 1:30-3:00 p.m.	WS 5 Assessment & Sustainability 1:30-3:00 p.m.	WS 5 Remote Sens- ing / Decision Support 1:30-3:00 p.m.	WS 5 Space Agency Follow-up to 14-16-03 Symposium 1:30-3:00 p.m.	WS 5 Fluvial & Deltaic 1:30-3:00 p.m.	WS 1 Climate Management & Sustainability 1:30-3:00 p.m.	WS 1 Coastal Zone 1:30-3:00 p.m.	WS 1 Land Use 1:30-3:00 p.m.	WS 1 Fluvial & Deltaic 1:30-3:00 p.m.
Sweet Cruise				Panel Session on the Role of Private Sector				Lunch/Poster Awards				Map-so-wards 2:30-5:30 p.m.			

Please make your hotel reservations before 9 October 2003 directly with the Sheraton Waikiki Beach Resort. Any reservations received after the deadline will be handled on a space-available basis. For reservations, please go to <https://www.sheraton-hawaii.com/secure/sw/conferences.cfm>, and click on the 30th International Symposium on Remote Sensing of Environment. The password to log into the reservation page is isrse. Exclusive rates for symposium participants will be applicable three days before, during and three days after the official symposium dates of 10 to 14 November 2003.

United Airlines has been selected as the official airline for the 30th International Symposium on Remote Sensing of Environment. United Airlines will be offering discount options for international and domestic delegates. For more complete details, or to make reservations, call the United Airlines Meeting Desk at 1-800-521-4041. The

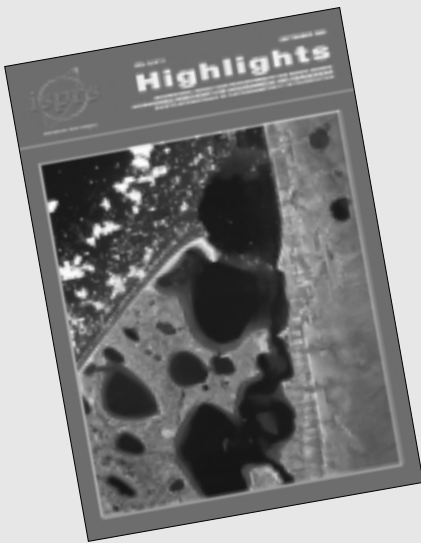
Meeting Desk hours are Monday through Sunday 8:00 AM to 10:00 PM (ET). When speaking to the Meeting Desk Agent, please refer to your Meeting Plus IT code: IT-500WM to be eligible for the discounts above.

Please visit our web-site at <http://isrse.pdc.org> or <http://isrse.pdc.org/text-only> for travel information, visa and passport requirements and details on the Technical Program.

The 30th International Symposium on Remote Sensing of Environment is being organised by the International Centre for Remote Sensing of Environment, and the U.S. host-organisers, the National Aeronautics and Space Administration in conjunction with the East-West Centre, the Pacific Disaster Centre and Jet Propulsion Laboratory.

Aloha and Mahalo!

Highlight your Business



Contact GTC's Marketing Manager,
Victor van Essen
(E-mail: victor.vanessen@gitc.nl)
for advertising details in ISPRS Highlights

GTC

P.O. Box 112, 8530 AC Lemmer, Nieuwedijk 43, 8531 HK Lemmer
Tel: + 31 (0) 514 561854, Fax: + 31 (0) 514 563898
E-mail: mailbox@gitc.nl, Website: www.gitc.nl