



**Financial Commission Chairman:**  
**HEINZ RÜTHER**  
Department of Geomatics  
University of Cape Town  
Private Bag  
Rondebosch 7700, SOUTH AFRICA  
Tel: +27-21-650-3573  
Fax: +27-21-650-3572  
E-mail: heinz.ruther@eng.uct.ac.za



**ISPRS Highlights Editor-in-Chief:**  
**LUCAS JANSSEN**  
National Institute for Coastal and Marine  
Management  
P.O. Box 20907, 2500 EX The Hague  
THE NETHERLANDS  
Tel: +31-70-3114308  
Fax: +31-70-3114321  
E-mail: l.f.janssen@rikz.rws.minvenw.nl



**ISPRS Journal Editor-in-Chief:**  
**EMMANUEL BALTSAVIAS**  
Institute of Geodesy and Photogrammetry  
ETH-Hönggerberg  
CH-8093 Zürich, SWITZERLAND  
Tel: +41-1-633-3042  
Fax: +41-1-633-110  
E-mail: manos@geod.baug.ethz.ch



**ISPRS Events Calendar Editor:**  
**TUAN-CHIH CHEN**  
Chinese Institute of Technology  
13-1, Lane 12, Yen-Ping Road  
Taoyuan 330, TAIWAN  
Tel: +886-918-953-197  
Fax: +886-2-2653-9148  
E-mail: profchen@ms13.hinet.net



**ISPRS Webmaster:**  
**FABIO REMONDINO**  
Photogrammetry and Remote Sensing  
Institute of Geodesy and Photogrammetry  
Swiss Federal Institute of Technology  
ETH-Hönggerberg  
CH-8093 Zürich  
SWITZERLAND  
Tel: +41-1-633-68-08  
Fax: +41-1-633-11-01  
E-mail: fabio@geod.baug.ethz.ch



**ISPRS Book Review Editor:**  
**IAN HARLEY**  
16 Gappenhil  
L-5335 Moutfort  
LUXEMBOURG  
Tel: +352-2635-0629  
Fax: +352-2635-0629  
E-mail: iharley@interway.lu

## ISPRS Highlights

**Editor-in-Chief:** Lucas Janssen  
(The Netherlands)  
**General Supervisor:** Ian Dowman (UK)

**ISPRS Website:** www.isprs.org

**Publishing Company:** GITC bv  
**President:** Johan Boesjes  
**Publication Director:** Floris Siteur  
**Layout Editors:** René Oomen  
Boukje de Haan  
**Production Manager:** Sandra Visscher  
**Marketing Manager:** Victor van Essen  
**Circulation Manager:** Jeroen Zaagemans

### Publisher's Address

GITC bv  
P.O. Box 112  
8530 AC Lemmer  
The Netherlands  
Tel.: +31-514-561854  
Fax: +31-514-563898

Nieuwedijk 43  
8531 HK Lemmer  
The Netherlands  
E-mail: mailbox@gitc.nl  
Web-site: www.gitc.nl

ISPRS Highlights is a quarterly magazine that reports on developments and activities of the International Society for Photogrammetry and Remote Sensing (ISPRS) and its Members in the fields of photogrammetry, remote sensing and spatial information sciences.

### Editorial Contributions

All material submitted to the publisher (GITC bv) and relating to ISPRS Highlights will be treated as unconditionally assigned for publication under copyright subject to the Editor's unrestricted right to edit and offer editorial comment. GITC bv assumes no responsibility for unsolicited material or for the accuracy of information thus received. GITC bv assumes, in addition, no obligation for return postage of material if not explicitly requested. Contributions must be sent for the attention of the Editor.

ISPRS Highlights can be ordered by subscription, please find below the subscription rates:

	Europe	All other countries
1 year ISPRS Member	€ 25.00	US \$ 31.00
1 year Non Member	€ 30.00	US \$ 39.00

Should you wish to take out a subscription than please contact our Circulation Manager (E-mail: jeroen.zaagemans@gitc.nl).

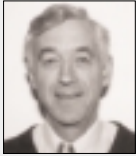
### INVITATION

All persons associated with ISPRS are invited to submit information for publication in ISPRS Highlights that is of interest to readers and that is in accordance with the ISPRS Contents Policy, in electronic form to the Editor-in-Chief by e-mail or PC-compatible formats.

No material may be reproduced in whole or in part without written permission of GITC bv.

Copyright © 2004, GITC bv, The Netherlands All rights reserved

## Council 2000 - 2004



**President JOHN C. TRINDER**  
 School of Geomatic Engineering  
 University of NSW  
 UNSW Sydney NSW 2052  
 AUSTRALIA  
 Tel: +61-2-9385-4197  
 Fax: +61-2-9313-7493  
 E-mail: j.trinder@unsw.edu.au



**Treasurer AMMATZIA PELED**  
 Department of Geography University of Haifa  
 mt Carmel  
 Haifa 31905  
 ISRAEL  
 Tel: +972-4-8240-148  
 Fax: +972-4-8249-605  
 E-mail: peled@geo.haifa.ac.il



**Secretary General IAN J. DOWMAN**  
 Department of Geomatic Engineering  
 University College London  
 Gower Street  
 London WC1E 6BT, U.K.  
 Tel: +44-20-7679-7226  
 Fax: +44-20-7380-0453  
 E-mail: idorman@ge.ucl.ac.uk



**First Vice President LAWRENCE W. FRITZ**  
 Lockheed Martin Corporation  
 14833 Lake Terrace  
 Rockville, MD 20853-3632, U.S.A.  
 Tel: +1-301-460-9046 or +1-610-531-3205  
 Fax: +1-301-460-0021  
 E-mail: lwfritz@erols.com



**Congress Director M. ORHAN ALTAN**  
 I.T.U. Civil Engineering Faculty  
 I.T.U. Insaat Fakültesi  
 80626 Ayazaga – Istanbul  
 TURKEY  
 Tel: +90-212-285-3810  
 Fax: +90-212-285-6587  
 E-mail: oaltan@srv.ins.itu.edu.tr



**Second Vice President GÉRARD BEGNI**  
 Groupement d'Intérêt Public MEDIAS-FRANCE  
 CNES-Bpi 2102, 18 avenue Edouard Belin  
 F-31401 Toulouse, Cedex 4  
 FRANCE  
 Tel: +33-5-6128-2667  
 Fax: +33-5-6128-2905  
 E-mail: sec@medias.cnes.fr

## Technical Commission Presidents 2000 - 2004



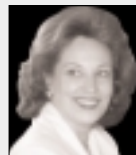
**Commission I - Sensors, Platforms and Imagery**  
 President: **STANLEY A. MORAIN**  
 Earth Data Analysis Center  
 The University of New Mexico  
 Bandelier West, Room 111  
 Albuquerque, NM 87131-6031, U.S.A.  
 Tel: +1-505-277-3622, ext. 228  
 Fax: +1-505-277-3614  
 E-mail: smorain@edac.unm.edu



**Commission V - Close-Range Techniques and Machine Vision**  
 President: **PETROS PATIAS**  
 The Aristotic University of Thessaloniki  
 Faculty of Surveying Engineering  
 Department of Cadastre Photogrammetry & Cartography  
 Univ. Box 473  
 GR-54006 Thessaloniki, GREECE  
 Tel: +30-31-9965-116  
 Fax: +30-31-996-128  
 E-mail: patias@topo.auth.gr



**Commission II - Systems for Data Processing, Analysis and Representation**  
 President: **JUN CHEN**  
 China Association of GIS (CAGIS)  
 National Geomatics Center  
 No. 1, Baishengcun, Zizhuyuan  
 100044 Beijing, CHINA  
 Tel: +86-10-6842-4072  
 Fax: +86-10-6842-4101  
 E-mail: Chenjun@nsdi.gov.cn



**Commission VI - Education and Communications**  
 President: **TANIA MARIA SAUSEN**  
 INPE  
 CP 515  
 12201-970 – Sao José dos Campos – SP, BRAZIL  
 Tel: +55-12-345-6862  
 Fax: +55-12-345-6870  
 E-mail: tania@ltd.inpe.br



**Commission III - Theory and Algorithms**  
 President: **FRANZ LEBERL**  
 Computer Graphics and Vision  
 Graz University of Technology  
 Inffeldgasse 16/E2  
 A-8010 Graz, AUSTRIA  
 Tel: +43-316-873-5012  
 Fax: +43-316-873-5050  
 E-mail: leberl@icg.tu-graz.ac.at



**Commission VII - Resource and Environmental Monitoring**  
 President: **R.R. NAVALGUND**  
 National Remote Sensing Agency  
 Department of Space, Government of India  
 Balanagar, Hyderabad 500 037 (A.P.), INDIA  
 Tel: +91-40-387-8360  
 Fax: +91-40-387-7210  
 E-mail: rangnath@nrsa.gov.in



**Commission IV - Spatial Information Systems and Digital Mapping**  
 President: **COSTAS ARMENAKIS**  
 Natural Resources Canada  
 Centre for Topographic Information –  
 GEOMATICS CANADA  
 615 Booth Street  
 Ottawa, Ontario  
 K1A 0E9 CANADA  
 Tel: +1-613-992-4487  
 Fax: +1-613-995-4127  
 E-mail: armenaki@NRCan.gc.ca

### Mark these 2004 deadlines!!

Issue	Material at editor	Shipment of issue
June	23 April	14 May
September	26 July	13 August
December	25 October	12 November